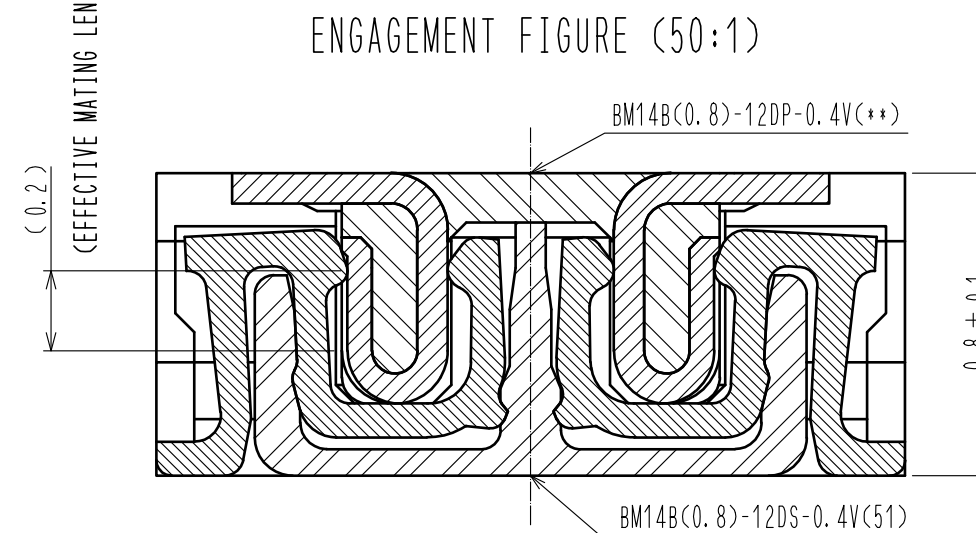


3> EACH CONTACTS AT 4 CORNERS ARE PROVIDED FOR METAL FITTINGS AND GROUNDING PURPOSE.

4> HRS MARK AND CAV NO. ARE INDICATED IN APPROX POSITION SHOWN.

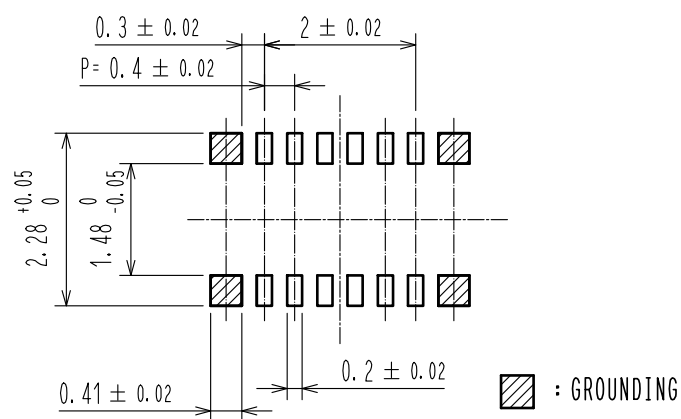
5> GATE POSITION IS INDICATED IN APPROX POSITION SHOWN.



FORM HC0011-5-7	1	2	3	4	5	6	7	8
-----------------	---	---	---	---	---	---	---	---

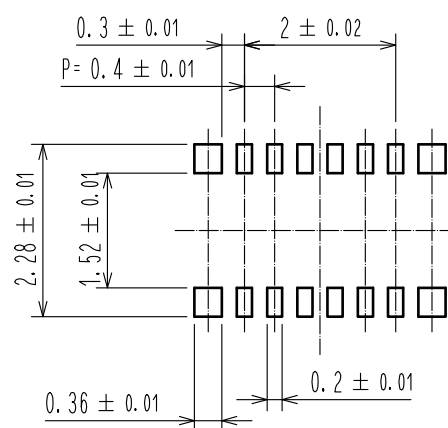
Feb.1.2024 Copyright 2024 HIROSE ELECTRIC CO., LTD. All Rights Reserved.
In case of consideration for using Automotive equipment / device which demand high reliability, kindly contact our sales window correspondents.

◆ RECOMMENDED PCB LAYOUT

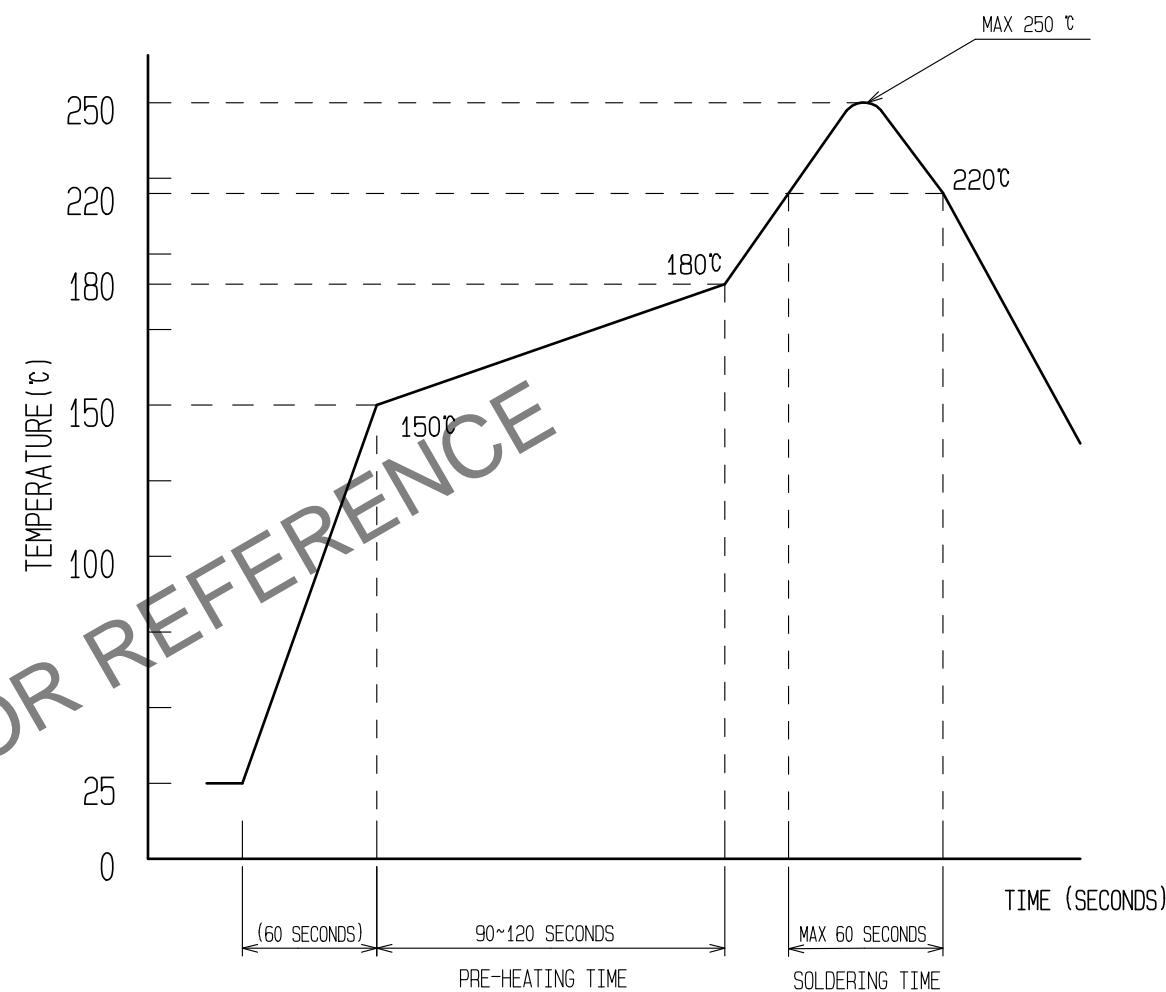


◆ RECOMMENDED METAL MASK DIMENSIONS

METAL MASK THICKNESS : $100 \mu\text{m}$



6 RECOMMENDED REFLOW TEMPERATURE PROFILE USING LEAD-FREE SOLDER PASTE.



REFLOW METHOD: IR REFLOW

NUMBER OF REFLOW CYCLES: 2 CYCLES MAX.

1) REFLOW TIME

DURATION ABOVE 220 $^{\circ}\text{C}$, 60 SEC. MAX.
(PEAK TEMPERATURE: 250 $^{\circ}\text{C}$ MAX)

2) PRE-HEAT TIME

PRE-HEAT TEMPERATURE(MIN): 150 $^{\circ}\text{C}$
PRE-HEAT TEMPERATURE(MAX): 180 $^{\circ}\text{C}$
PRE-HEAT TIME: 90-120 sec.

6 THIS TEMPERATURE PROFILE IS PER THE CONDITIONS SHOWN ABOVE. ADDITIONAL FACTORS, SUCH AS SOLDER PASTE TYPE, PCB SIZE AND OTHER MOUNTED COMPONENTS COULD AFFECT THE PROFILE, THEREFORE, A THOROUGH EVALUATION OF MOUNTING CONDITION IS REQUIRED PRIOR TO PRODUCTION. TEMPERATURE IS MEASURED AT CONTACT LEAD.

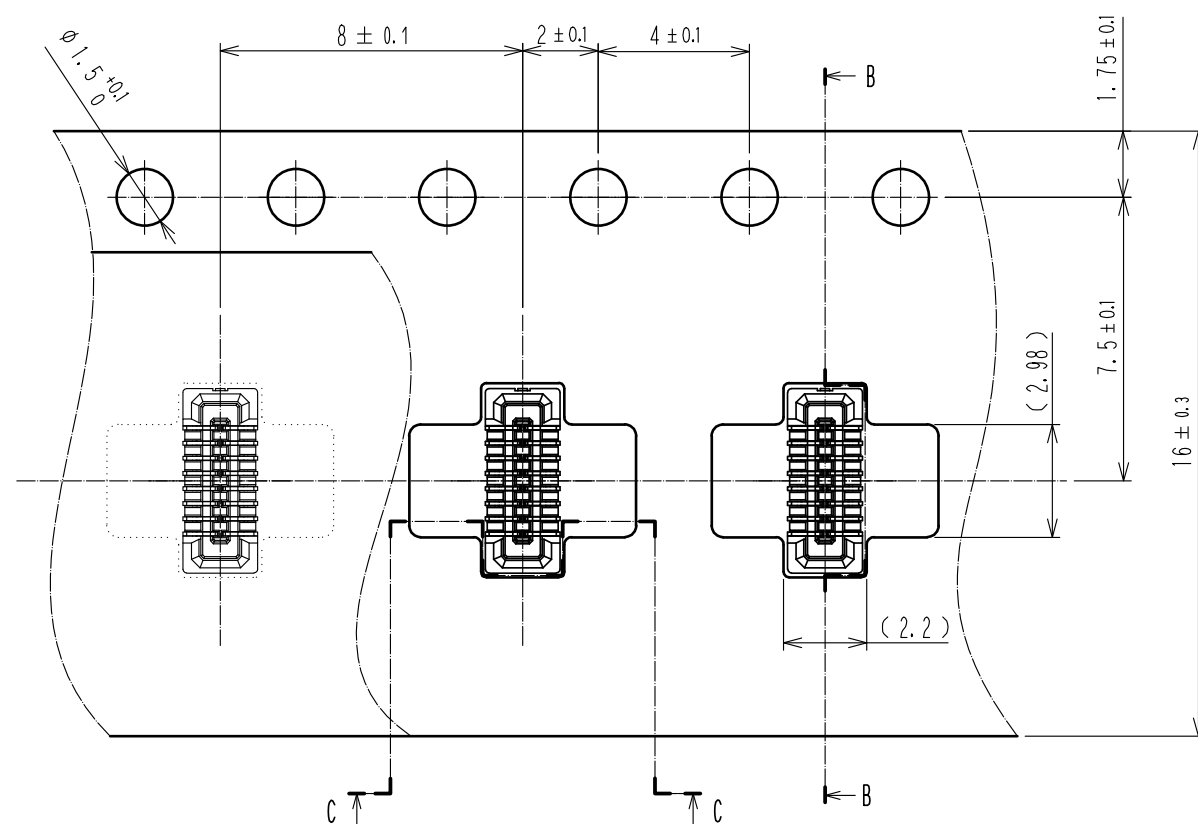
HRS

DRAWING NO.	EDC-329242-51-01
PART NO.	BM14B(0.8)-12DS-0.4V(51)
CODE NO.	CL684-8041-4-51

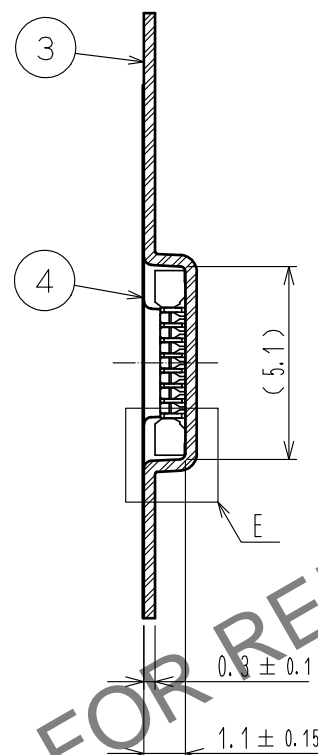
2/3

Feb.1.2024 Copyright 2024 HIROSE ELECTRIC CO., LTD. All Rights Reserved.
In case of consideration for using Automotive equipment / device which demand high reliability, kindly contact our sales window correspondents.

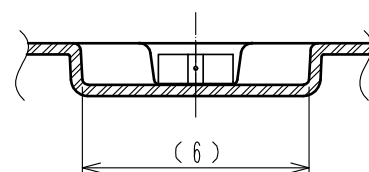
EMBOSSED CARRIER TAPE PACKAGING (5:1)



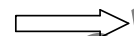
B-B (5:1)



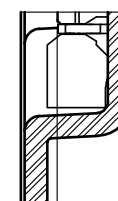
C-C (5:1)



DIRECTION OF UNREELING

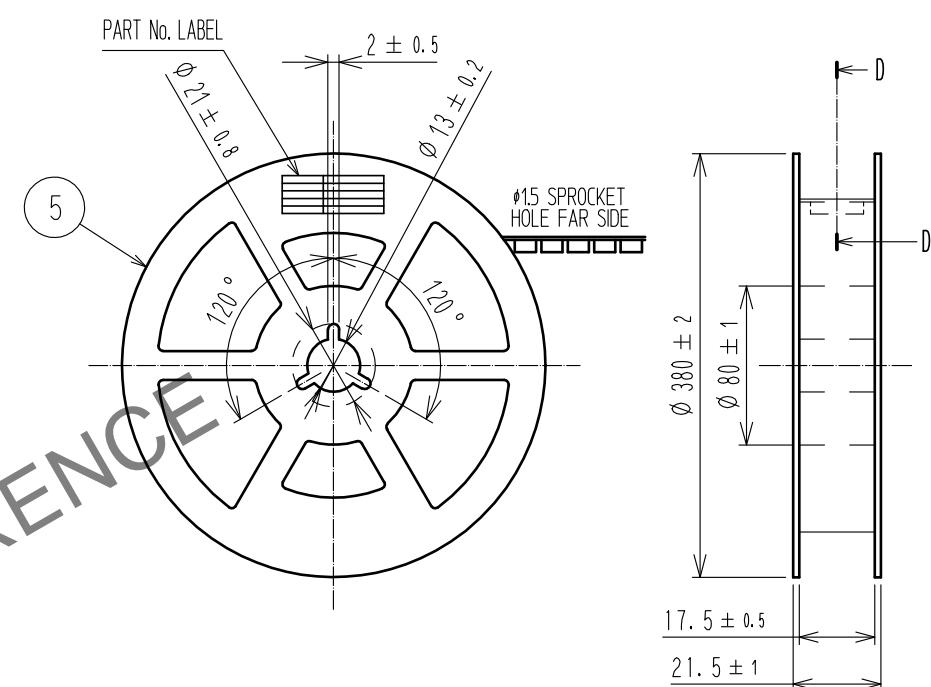


E(10:1)

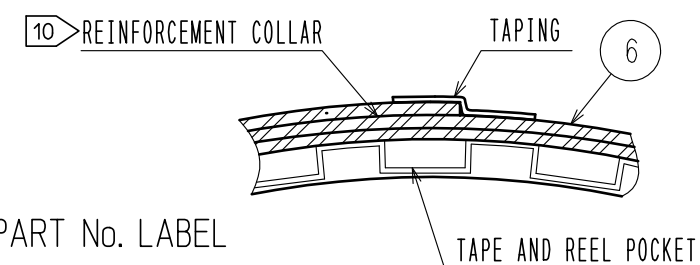


PICK UP AREA : (0.13)

STYLE AND DIMENTION OF REEL (FREE)



D-D (FREE)



DETAIL OF PART No. LABEL

SUPPLIER
QUANTITY
PART No.
CODE No.
DATE OF MANUFACTURED

製造年月日	** ** *
製品コード	CL684-8041-4-51
製品名	BM14B(0.8)-12DS-0.4V(51)
数量	8,000
納入者	ヒロセ電機(株)

7. PER REEL 8000 CONNECTORS.

8. THE DIMENSIONS IN PARENTHESES ARE FOR REFERENCE.

9 REFER TO JIS C 0806. IEC 60286-3(PACKAGING OF COMPONENTS FOR AUTOMATIC HANDLING)

10 AFTER PACKAGING, ROLL 2 METERS OF THE REINFORCEMENT COLLAR TO OUTER CIRCUMFERENCE OF TAPE AND REEL POCKET, AND TAPE DOWN AT THE END THE COLLAR.

TRAILER

9 TAPING (FREE)

LEADER

HRS

DRAWING NO.	EDC-329242-51-01
PART NO.	BM14B(0.8)-12DS-0.4V(51)
CODE NO.	CL684-8041-4-51