



Connectors > Automotive Connectors > Automotive Housings



Connector System: **Wire-to-Wire**
Number of Positions: **18**
Connector & Housing Type: **Housing for Female Terminals**
Centerline (Pitch): **4.45 mm [.175 in]**
Sealable: **Yes**

Features

Product Type Features

Mixed & Hybrid Connector	No
Connector Shape	Rectangular
Connector System	Wire-to-Wire
Connector & Housing Type	Housing for Female Terminals
Sealable	Yes
Connector & Contact Terminates To	Wire & Cable
Primary Locking Feature	Integrated in Housing

Configuration Features

Number of Positions	18
Number of Rows	3

Electrical Characteristics

Operating Voltage	250 VAC
Nominal Voltage Architecture	12 V, 42 V

Body Features

Cable Exit Angle	180°
Primary Product Color	Gray
Connector & Keying Code	A



Contact Features

Contact Size	Size 16
Contact Type	Socket
Mating Pin Diameter	1.59 mm[.063 in]
Contact Current Rating (Max)	13 A

Mechanical Attachment

Terminal Position Assurance	Yes
Strain Relief	With
Mating Alignment Type	Keyed
Mating Alignment	With
Connector Mounting Type	Cable Mount (Free-Hanging)

Housing Features

Housing Material	PA GF
Centerline (Pitch)	4.45 mm[.175 in]

Dimensions

Connector Height	35.98 mm[1.417 in]
Product Width	53.54 mm[2.108 in]
Product Length	35.69 mm[1.405 in]
Row-to-Row Spacing	7.62 mm[.3 in]
Compatible Insulation Diameter Range	2.23 – 3.68 mm[.088 – .145 in]

Usage Conditions

Operating Temperature (Max)	125 °C[257 °F]
Operating Temperature Range	-55 – 125 °C[-67 – 257 °F]

Operation/Application

Circuit Application	Power & Signal
---------------------	----------------

Industry Standards

Degree of Protection	Not Tested
UL Flammability Rating	Not tested

Packaging Features

Packaging Quantity	200
Packaging Method	Box

Other



Serviceable	Yes
Connector Position Assurance Capable	No

Product Compliance

For compliance documentation, visit the product page on TE.com>

EU RoHS Directive 2011/65/EU	Compliant
EU ELV Directive 2000/53/EC	Compliant
China RoHS 2 Directive MIIT Order No 32, 2016	No Restricted Materials Above Threshold
EU REACH Regulation (EC) No. 1907/2006	Current ECHA Candidate List: JUNE 2023 (235) Candidate List Declared Against: JUNE 2023 (235) SVHC > Threshold: Octamethylcyclotetrasiloxane (D4) (.5% in Component Part) Dodecamethylcyclohexasiloxane (D6) (.5% in Component Part) Decamethylcyclopentasiloxane (D5) (.5% in Component Part) Article Safe Usage Statements: Wash thoroughly after handling. Recycle if possible and dispose of the article by following all applicable governmental regulations relevant to your geographic location.
Halogen Content	Not Low Halogen - contains Br or Cl > 900 ppm.
Solder Process Capability	Not reviewed for solder process capability

Product Compliance Disclaimer

This information is provided based on reasonable inquiry of our suppliers and represents our current actual knowledge based on the information they provided. This information is subject to change. The part numbers that TE has identified as EU RoHS compliant have a maximum concentration of 0.1% by weight in homogenous materials for lead, hexavalent chromium, mercury, PBB, PBDE, DBP, BBP, DEHP, DIBP, and 0.01% for cadmium, or qualify for an exemption to these limits as defined in the Annexes of Directive 2011/65/EU (RoHS2). Finished electrical and electronic equipment products will be CE marked as required by Directive 2011/65/EU. Components may not be CE marked. Additionally, the part numbers that TE has identified as EU ELV compliant have a maximum concentration of 0.1% by weight in homogenous materials for lead, hexavalent chromium, and mercury, and 0.01% for cadmium, or qualify for an exemption to these limits as defined in the Annexes of Directive 2000/53/EC (ELV). Regarding the REACH Regulation, the information TE provides on SVHC in articles for this part number is based on the latest European Chemicals Agency (ECHA) 'Guidance on requirements for substances in articles' posted at this URL: <https://echa.europa.eu/guidance-documents/guidance-on-reach>

Compatible Parts



TE Part # CAT-J67-DSCC16
DEUTSCH Size 16 Crimp Contacts

TE Part # CAT-D48-ST273
DEUTSCH Solid Contacts

TE Part # CAT-D48-SP729
DEUTSCH Sealing Plugs

TE Part # DT-RT1
EXT TOOL, FRONT RELEASE

TE Part # DTV02-18PA
REC, 18P, GRY, N, FLANGE, A

TE Part # WV-18S
WEDGE LOCK, 18P, PLG, GRN, DTV

TE Part # DTV02-18PA-C015
REC, 18P, GRY, E, FLANGE, A

TE Part # DTV18S-BT-BK
BOOT, 18P, PLG, ST, BLK

TE Part # 1062-14-0177
SOC, SF, SIZE 16, 14-18, SN/SN

TE Part # DTV02-18PA-P055
REC, 18P, GRY, N, FLANGE, NO
INSERTS, A

Also in the Series | **DEUTSCH DT**

Automotive Connector Caps & Covers
(19)

Automotive Connector Locks &
Position Assurance(74)

Automotive Housings(657)

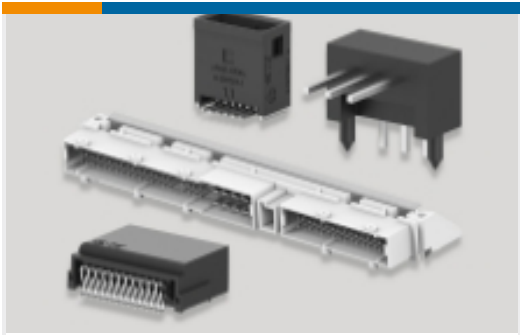
Connector Backshells(58)

Connector Seals & Cavity Plugs(6)

Connector Strain Relief(28)

Insertion & Extraction Tools(3)

Other Automotive Connector
Accessories(27)



PCB Headers & Receptacles(103)

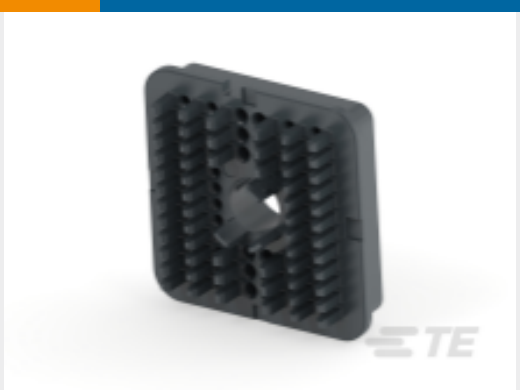
Customers Also Bought



TE Part #HD34-18-21PN
REC, 21P, AL, N, 20, P



TE Part #DRB16-60SBE-L018
PLG, 60P, BLK, E, CAP, B



TE Part #WB-60SB
WEDGE LOCK, 60P, PLG, BLK, DRB, B



TE Part #DTV06-18SC
PLG, 18P, GRN, N, C



TE Part #DTV06-18SB
PLG, 18P, BLK, N, B



TE Part #DTV02-18PA
REC, 18P, GRY, N, FLANGE, A



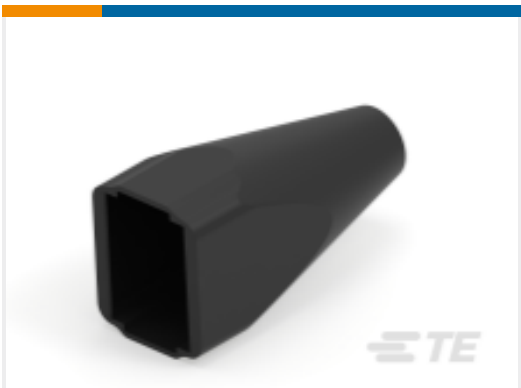
TE Part #WV-18S
WEDGE LOCK, 18P, PLG, GRN, DTV



TE Part #DTV02-18PB
REC, 18P, BLK, N, FLANGE, B



TE Part #WV-18P
WEDGE LOCK, 18P, REC, GRN, DTV



TE Part #DTV18S-BT-BK
BOOT, 18P, PLG, ST, BLK

Documents

Product Drawings

PLG, 18P, GRY, N, A

English

CAD Files

3D PDF

3D

Customer View Model

ENG_CVM_CVM_DTV06-18SA_C.2d_dxf.zip



English

Customer View Model

[ENG_CVM_CVM_DTV06-18SA_C.3d_igs.zip](#)

English

Customer View Model

[ENG_CVM_CVM_DTV06-18SA_C.3d_stp.zip](#)

English

By downloading the CAD file I accept and agree to the [Terms and Conditions](#) of use.

Datasheets & Catalog Pages

[CONNECTOR SELECTOR](#)

English

Product Specifications

[Product Specification](#)

English