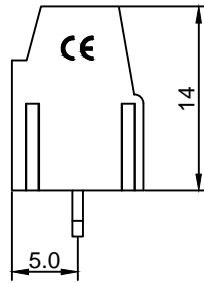
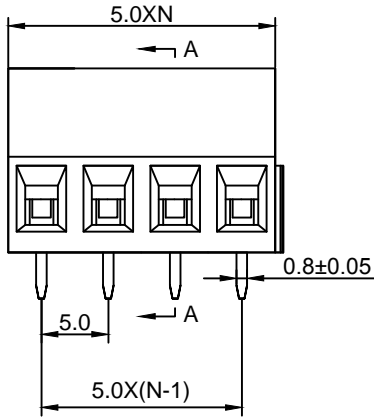
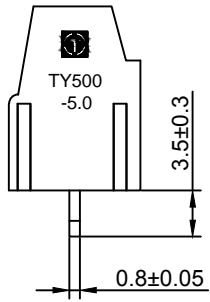


**Material :**

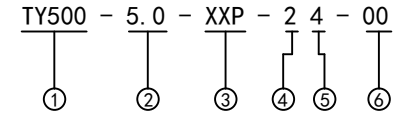
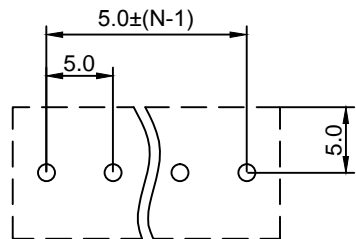
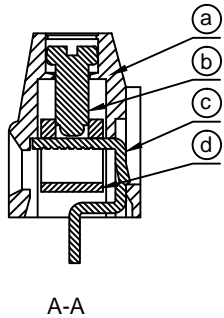
- (a) Housing : PA66(UL94V-0)
- (b) Screws : Steel , Cr<sup>3+</sup>Zn Plated
- (c) Pin Header : Brass , Tin Plated
- (d) Cage : Brass , Ni Plated

**Electrical :**

- |                               |                  |                        |
|-------------------------------|------------------|------------------------|
|                               | UL               | IEC                    |
| 1. Rated Voltage :            | 300V             | 250V                   |
| 2. Rated Current :            | 15A              | 18A                    |
| 3. Torque Value :             | M2.5 , 3.54Lb.in | M2.5 , 0.4N.m          |
| 4. Wire Range :               | 24-12AWG         | 0.5-2.5mm <sup>2</sup> |
| 5. Stripping Length :         | 6-7mm            |                        |
| 6. Withstanding Voltage :     | AC2000V/1Min.    |                        |
| 7. Operating Temperature :    | -40°C~+105°C     |                        |
| 8. RoHS Compliance            |                  |                        |
| 9. Safety Approval :          | cULus            |                        |
| 10. Undimensioned Tolerances: |                  |                        |



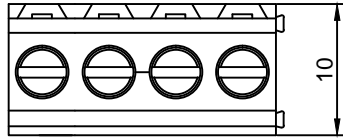
Pitch Range In mm			Nominal Dimension Range In mm					—	∩	□
≤6	6 ~ 10	10 ~ 24	≤30	30 ~ 60	60 ~ 100	100 ~ 150	>150	0.05/10		
±0.10	±0.15	±0.25	±0.20	±0.30	±0.50	±0.70	±1.00	±0.1°		



- ① Series No.
- ② Pitch
- ③ Poles  
02 02Contacts  
03 03Contacts  
...  
24 24Contacts
- ④ 1 Single Pitch  
2 Double Pitch
- ⑤ Color: 1 Grey  
2 Blue  
3 Black  
4 Green  
5 Orange  
6 Red  
...  
7 Transparent  
8 Yellow  
9 White
- ⑥ Customer Request :  
00--Standard

**TOPONELEC** 拓宜(上海)工控电器设备有限公司  
Topone(Shanghai) Industrial Control Electrical Equipment Co., LTD.

DETACHED LISTS	APPD: MA_9/8/17'	PART NO.		
	CHKD: Yu_9/7/17'	DRAWING NO.		
	DRFT: Chen_9/6/17'	REV	1	
	THIRD ANGLE PROJECTION	SHEET	1/1	
	MM (INCH)	DO NOT SCALE DRAWING	SCALE	1/1

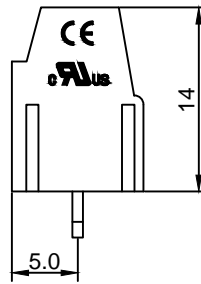
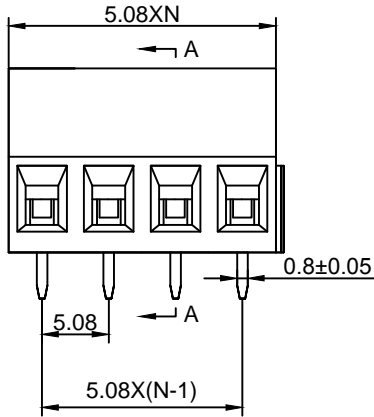
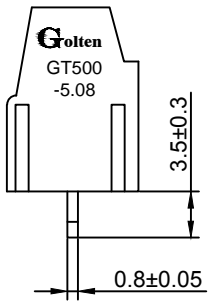


**Material :**

- (a) Housing : PA66(UL94V-0)
- (b) Screws : Steel , Cr<sup>3+</sup>Zn Plated
- (c) Pin Header : Brass , Tin Plated
- (d) Cage : Brass , Ni Plated

**Electrical :**

- |                               |                  |                        |
|-------------------------------|------------------|------------------------|
|                               | UL               | IEC                    |
| 1. Rated Voltage :            | 300V             | 250V                   |
| 2. Rated Current :            | 15A              | 18A                    |
| 3. Torque Value :             | M2.5 , 3.54Lb.in | M2.5 , 0.4N.m          |
| 4. Wire Range :               | 24-12AWG         | 0.5-2.5mm <sup>2</sup> |
| 5. Stripping Length :         | 6-7mm            |                        |
| 6. Withstanding Voltage :     | AC2000V/1Min.    |                        |
| 7. Operating Temperature :    | -40°C~+105°C     |                        |
| 8. RoHS Compliance            |                  |                        |
| 9. Safety Approval :          | eULus            |                        |
| 10. Undimensioned Tolerances: |                  |                        |

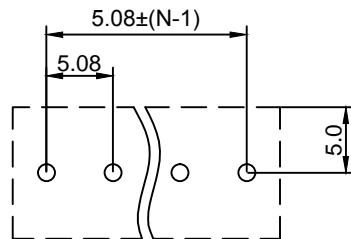
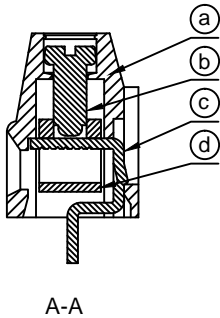


Pitch Range In mm			Nominal Dimension Range In mm					□	∩	◇
≤6	6 ~ 10	10 ~ 24	≤30	30 ~ 60	60 ~ 100	100 ~ 150	>150	0.05/10		
±0.10	±0.15	±0.25	±0.20	±0.30	±0.50	±0.70	±1.00	±0.1°		

GT500 - 5.08 - XXP - 2 4 - 00 AH

①            ②            ③            ④            ⑤            ⑥            ⑦

- ① Series No.
- ② Pitch
- ③ Poles  
02 02Contacts  
03 03Contacts  
...  
24 24Contacts
- ④ 1 Single Pitch  
2 Double Pitch
- ⑤ Color: 1 Grey  
2 Blue  
3 Black  
4 Green  
5 Orange  
6 Red  
7 Transparent  
8 Yellow  
9 White
- ⑥ Customer Request : 00--Standard
- ⑦ AH--Standard(PA66)



DETACHED LISTS	<b>Grolten</b>		宁波冠泰电子有限公司 NINGBO GOLTEN ELECTRONICS CO., LTD.	
	APPD: MA_9/8/17 '	PART NO. GT500-5.08-XXP-XX-00AH		
	CHKD: Yu_9/7/17 '			
	DRFT: Chen_9/6/17 '	DRAWING NO.		REV 1
	 THIRD ANGLE PROJECTION	 MM (INCH) DO NOT SCALE DRAWING		SHEET 1/1
		SCALE 1/1		