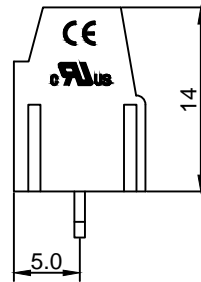
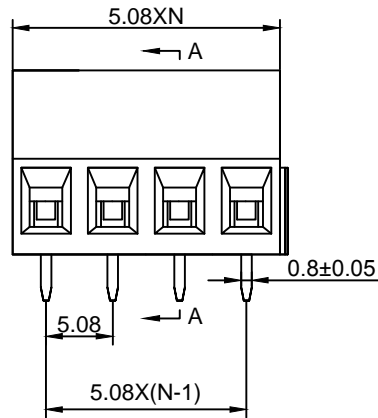
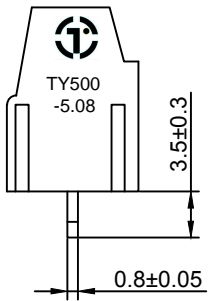


**Material :**

- (a) Housing : PA66(UL94V-0)
- (b) Screws : Steel , Cr<sup>3+</sup>Zn Plated
- (c) Pin Header : Brass , Tin Plated
- (d) Cage : Brass , Ni Plated

**Electrical :**

- |                               |                  |                        |
|-------------------------------|------------------|------------------------|
|                               | UL               | IEC                    |
| 1. Rated Voltage :            | 300V             | 250V                   |
| 2. Rated Current :            | 15A              | 18A                    |
| 3. Torque Value :             | M2.5 , 3.54Lb.in | M2.5 , 0.4N.m          |
| 4. Wire Range :               | 24-12AWG         | 0.5-2.5mm <sup>2</sup> |
| 5. Stripping Length :         | 6-7mm            |                        |
| 6. Withstanding Voltage :     | AC2000V/1Min.    |                        |
| 7. Operating Temperature :    | -40°C~+105°C     |                        |
| 8. RoHS Compliance            |                  |                        |
| 9. Safety Approval :          | cULus            |                        |
| 10. Undimensioned Tolerances: |                  |                        |

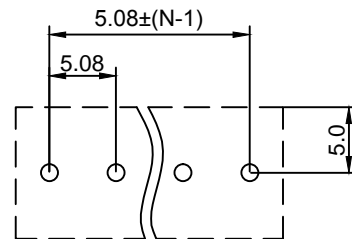
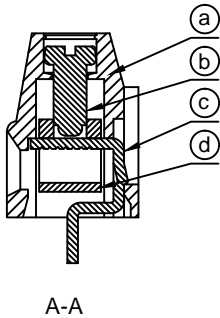


Pitch Range In mm			Nominal Dimension Range In mm					—	∩	∇
≤6	6 ~ 10	10 ~ 24	≤30	30 ~ 60	60 ~ 100	100 ~ 150	>150	0.05/10		
±0.10	±0.15	±0.25	±0.20	±0.30	±0.50	±0.70	±1.00	±0.1°		

TY500 - 5.08 - XXP - 1 4 - 03

①            ②            ③            ④            ⑤            ⑥

- ① Series No.
- ② Pitch
- ③ Poles  
02 02Contacts  
03 03Contacts  
...  
24 24Contacts
- ④ 1 Single Pitch  
2 Double Pitch
- ⑤ Color: 1 Grey  
2 Blue  
3 Black  
4 Green  
5 Orange  
6 Red  
...  
8 Yellow  
9 White
- ⑥ Customer Request : 03--  
Stainless steel screw



DETACHED LISTS	<b>TOPONELEC</b>		<b>拓宜(上海)工控电器设备有限公司</b>		
	Topone (Shanghai) Industrial Control Electrical Equipment Co., LTD.		PART NO. <b>TY500-5.08-XXP-14-03</b>		
	APPD: 9/8/17'	CHKD: 9/7/17'	DRFT: 9/6/17'	DRAWING NO.	
	THIRD ANGLE PROJECTION			REV	1
			SHEET	1/1	
			SCALE	1/1	