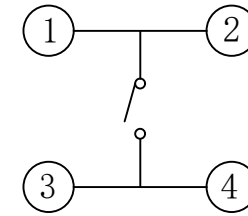
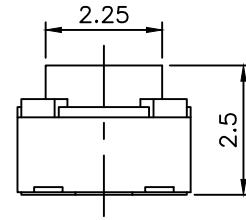
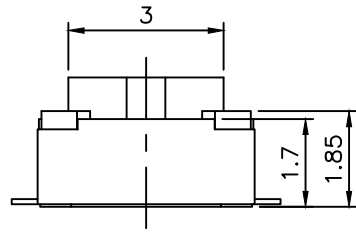
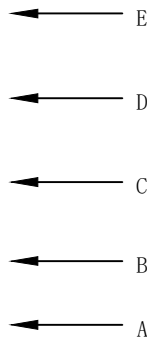
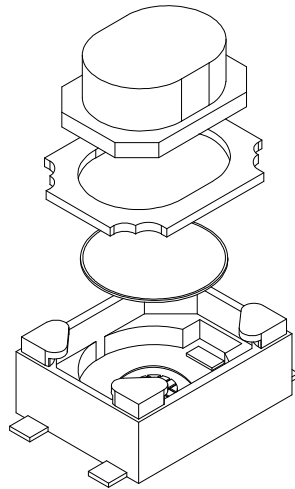


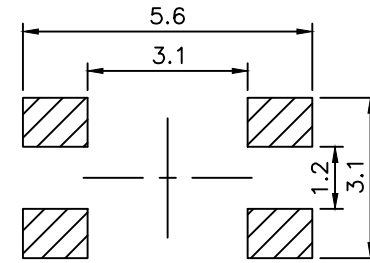
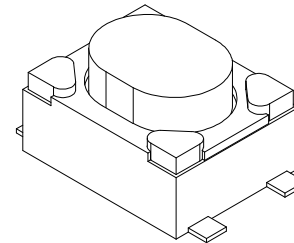
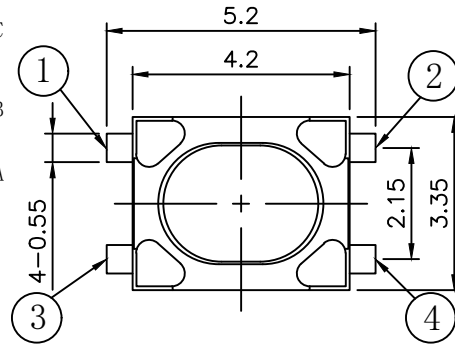
RoHS

CAD GENERATED DRAWING. DON'T CHANGE BY HAND.

REV.	ECN. NO.	APPD.
------	----------	-------



CIRCUIT DIAGRAM



PCB WELDING DRAWING

Specification

Operating Life	100,000
Contact rating	50mA@12V DC.
Insulation resistance	1011Ω min.
Contact resistance	100mΩ max. initial
Dielectric Strength	250 V AC(1mm)
Travel	0.2±0.1mm
Storage Temperature	-30° C to 85° C

Packaging:
Reel of 3,000 pieces.

ITEM	DESCRIPTION	MATERIAL	QTY	FINISH/COLOR
5	STEM	PPA	1	White/Black
4	COVER	Stainless Steel	1	Clean
3	DOME	Stainless Steel	1	Plated Ag
2	HOUSING	LCP	1	White
1	PIN	Brass	1	Plated Ag

Mechanical

PN	Operating Force(gf)	Height mm	Travel
BTS0A0160AWG00	100±50	2.5	0.2±0.1mm
BTS0A0161AWG00	160±50	2.5	0.2±0.1mm
BTS0A0162AWG00	250±50	2.5	0.2±0.1mm
BTS0A0163AWG00	400±50	2.5	0.2±0.1mm

X.	±0.50	X.°	±2°	UNITS	mm
.X	±0.30	.X°	±1°		
.XX	±0.10	.XX°	±0.5°	MAT'L	/
.XXX	±0.05				
				FINISH	/
				Q'TY	/

THESE DRAWINGS AND SPECIFICATIONS ARE THE PROPERTY OF Bozhong TECHNOLOGY CO.,LTD AND SHALL NOT BE REPRODUCED.



东莞市博众电气有限公司
Dongguan Bozhong Electrical Co., Ltd

PART NO.
BTS0A016

TITLE:
TACTILE SWITCH 4.2*3.2精

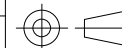
APPD: ROGER

DWG NO.:

CHKD: ROC

BTS0A016

DR: BILLY WANG 2020/08/21



SCALE	SHEET	REV.
1/1	1/1	A1