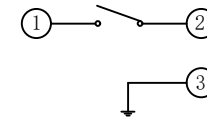
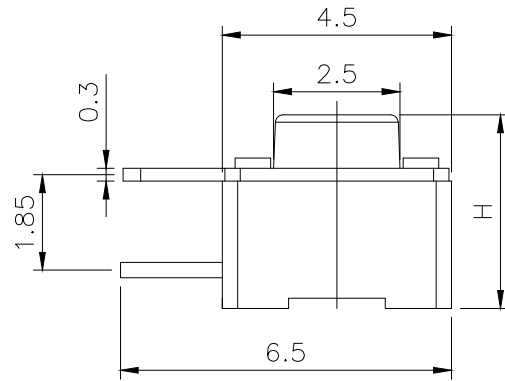
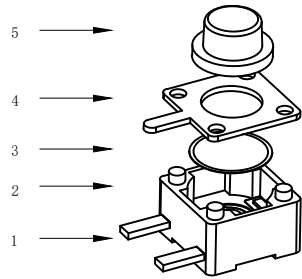


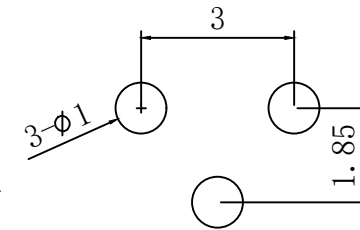
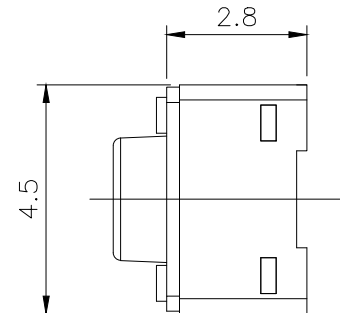
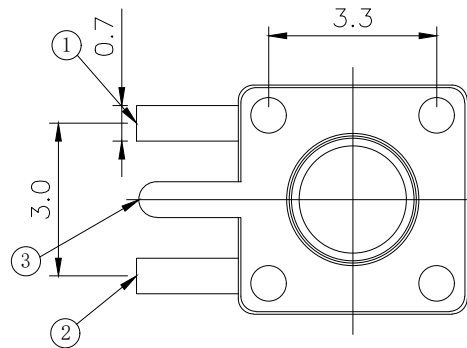
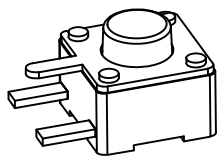
RoHS

CAD GENERATED DRAWING. DON'T CHANGE BY HAND.

REV.	ECN. NO.	APPD.



CIRCUIT DIAGRAM



PCB WELDING DRAWING

Specification

Operating Life	100,000
Contact rating	50mA@12V DC.
Insulation resistance	100 Ω min.
Contact resistance	100mΩ max. initial
Dielectric Strength	250 V AC(1mm)
Travel	0.2±0.1mm
Storage Temperature	-30° C to 85° C

Mechanical

ITEM	DESCRIPTION	MATERIAL	QTY	FINISH/COL. OR
E	Button	PPA	1	Black
D	COVER	Brass	1	Cleaning
C	HOME	Stainless Steel	1	Plated Ag
B	HOUSING	PPA	1	Black
A	PIN	PHOSPHOR BRONZE	1	Plated Ag

Type	Operating Force(gf)	Height mm	Button	Leads Shape(G, J, T)	Ground pin (0,1)	Prog Option(0,1)
BTSOC0017	250±50	T	13.0	B (BLACK)	T	0 (None)
		S	10.0			
		R	9.5			
		Q	9.0			
		P	8.5			
		N	8.0			
		M	7.5			
		L	7.0			
		K	6.5			
		H	6.0			
		G	5.5			
		F	5.0			
1	160±50	E	4.8			
		D	4.5			
		C	4.3			
		B	3.8			
		A	3.5			

X. ±0.50	X.° ±2°	UNITS	博众电气 —BOZHONG ELECTRIC—	东莞市博众电气有限公司 Dongguan Bozhong Electrical Co., Ltd
.X ±0.30	.X° ±1°	mm		
.XX ±0.10	.XX° ±0.5°	MAT'L	PART NO.	BTSOC0017
.XXX ±0.05		FINISH	APPD: ROGER	
THESE DRAWINGS AND SPECIFICATIONS ARE THE PROPERTY OF Bozhong TECHNOLOGY CO.,LTD AND SHALL NOT BE REPRODUCED.			CHKD: ROC	DWG NO.:
			DR: BILLY WANG 2020/08/21	BTSOC0017

Packaging:
A reel of 1000 pieces for 3.5~4.8H
A reel of 800 pieces for 5.0~13.0H

博众电气 —BOZHONG ELECTRIC—	东莞市博众电气有限公司 Dongguan Bozhong Electrical Co., Ltd
PART NO. BTSOC0017	TITLE: TACTILE SWITCH 4.5x4.5mm
APPD: ROGER	DWG NO.: BTSOC0017
CHKD: ROC	SCALE SHEET REV. 1/1 1/1 A1
DR: BILLY WANG 2020/08/21	