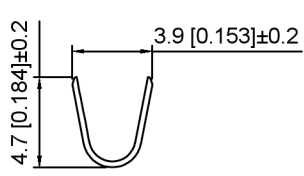


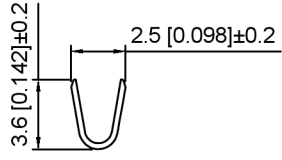
Specifications:
 规格:
 Voltage rating:600V AC/DC
 额定电压: 600V AC/DC
 Current rating:19A AC/DC
 额定电流: 19A AC/DC
 Withstanding voltage:5000V AC/minute
 耐受电压: 5000V AC/分钟
 Temperature range:-40℃-+105℃
 温度范围: -40℃-+105℃
 Insulation resistance:1000MΩ min
 绝缘电阻: 1000MΩ Min
 Contact resistance:3.5mΩ Max
 接触电阻: 3.5mΩ Max

X9635 T M - B SN
 ① ② ③ ④ ⑤

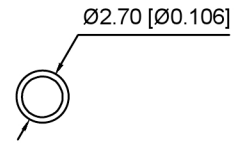
- 1.Series No
- 2.Category:T-Terminal
- 3.Category:M-Male Terminal
- 4.Material:Brass
- 5.Plating:SN-Tin Plated



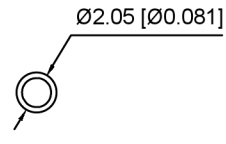
SEC:A-A



SEC:B-B



SEC:C-C



SEC:D-D

X9635TM-BSN	Brass	AWG#16-20	3.3mm(Max)	Tin Over Nickel	X9635HF
PART NO	Material	Wire Range	Insulation O.D	Finish	Suitable XKB Housing

广东星坤科技股份有限公司

文件工程章

MARK	DESCRIPTION	DATE	REVISED	APPROVED	UNSPECIFIED TOLERANCES
Δx					ANGLAR ±5°
Δx					L ≤ 4 ±0.2
Δx					4 < L ≤ 16 ±0.3
					16 < L ≤ 63 ±0.4
					L > 63 ±0.5



DSND		SCALE: N/A
DWN		VIEW:
CHKD		UNIT: mm/in
APPD		SIZE: A4

MODEL TYPE: 6.35mm Crimp Style Connector		
PART NO.: X9635TM-BSN		
DWG NO.: X-X9635TM-BSN		
WEIGHT	SHEET	REVISION
	1/1	A0

XKB INDUSTRIAL PRECISION CO., LIMITED