

## SMD transformer for vehicle and BMS transformer



### FEATURES

- Qualification: PER AEC-Q200
- Design Construction: Functional insulation
- Operating Temperature Range: -40~+125C °
- Storage Temperature Range: -50~+125C °
- Working Voltage: 1000 Vdc
- Hi-Pot: 4300 VDC 1 mA, 60 sec



Series/Type: **CB0608S**

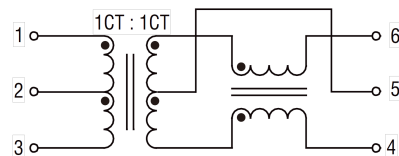
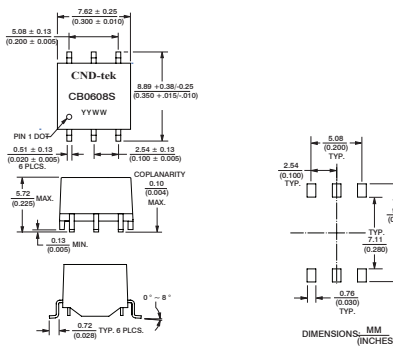
### ELECTRICAL SPECIFICATIONS @25°C

OCL	DCR (Ω)	Turns Ratio	Insertion Loss (4MHZ)	Return Loss (Z out = 100 ohms) (4MHZ)	CMRR		Leakage Inductance
					1-100MHz	100-200MHz	
150uH(min) 450uH(max)	0.45Ω max(Transformer Side ) 0.85 Ω max(CM Choke Side)	1CT :1CT±2%	-0.25dB Max	-22dB Min	-35dB Min	-28dB Min	0.50μH Max

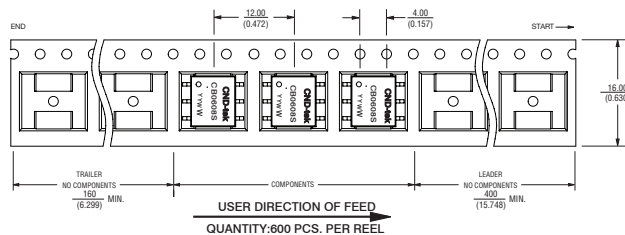
\*Testing Conditions:100KHz 0.1V

### DIMENSIONS & MARKING

### SCHEMATICS



### Packaging Specifications



DIMENSIONS: MM (INCHES)

