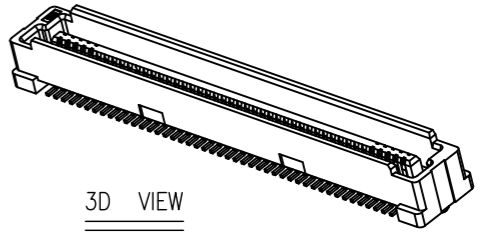
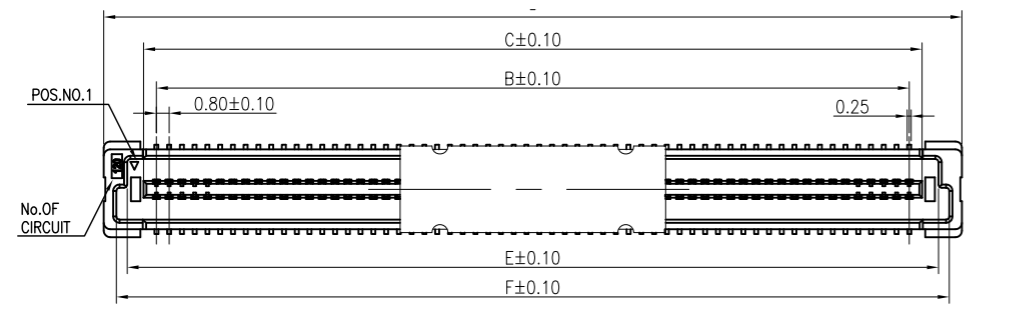
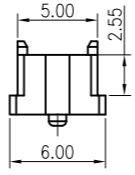
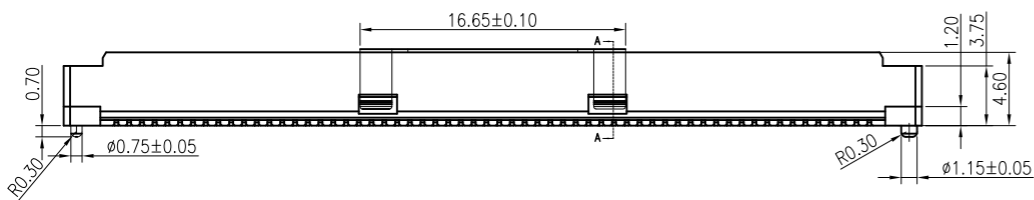


Engineer Drawing

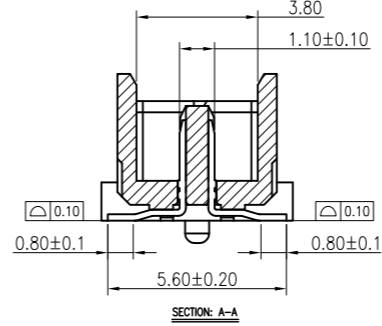
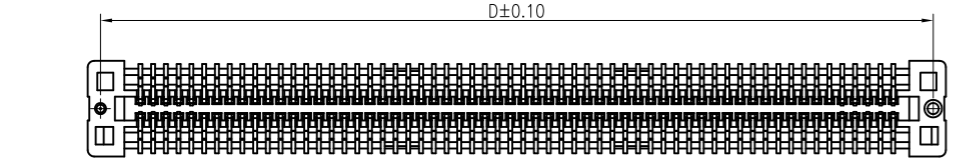


NOTES:
 1.HUOSING: LCP HIGH-TEMP THERMOPLASTIC UL94V-0 COLOR:BEIGE
 2.TERMINAL:PHOSPHOR BRONZE

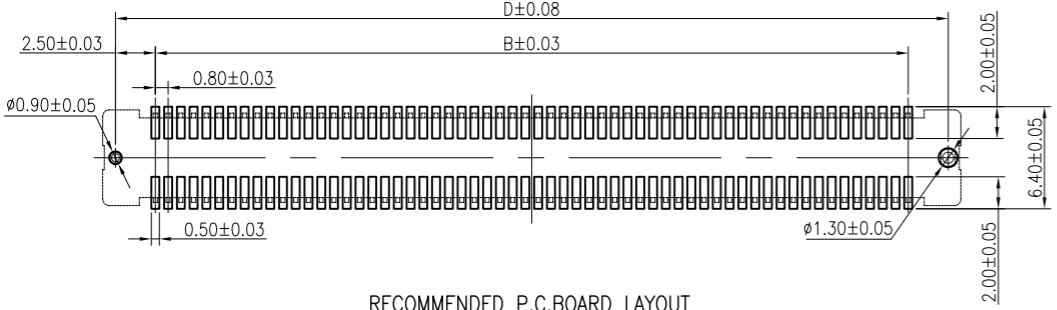


IPC8 08 471 M XX X X X

- ① Series Type
- ⑤ Pin Code
- ② Pitch:0.8mm
- ⑥ Rows Code
- ③ Height
- ⑦ Serial Code
- ④ Connector Type
- ⑧ Other Code



NO.of contacts	Dimensions					
	A	B	C	D	E	F
40	21.80	15.20	16.80	20.20	18.86	20.21
50	25.80	19.20	20.80	24.20	22.86	24.21
60	29.80	23.20	24.80	28.20	26.86	28.21
80	37.80	31.20	32.80	36.20	34.86	36.21
100	45.80	39.20	40.80	44.20	42.86	44.21
120	53.80	47.20	48.80	52.20	50.86	52.21
140	61.80	55.20	46.80	60.20	58.86	60.21
160	69.80	63.20	64.80	68.20	66.86	68.21
180	77.80	71.20	72.80	76.20	74.86	76.21
200	85.80	79.20	80.80	84.20	82.86	84.21



TOLERANCES:
 X: =±0.25
 X.X: =±0.20
 X.XX: =±0.10
 GENERAL ANGLE
 X° = ±1°

	www.i-ncp.com
PART NO: IPC808471M xxS7V	NAME: 0.8PH H4.7 BTB Male Receptacle Assembly H5.0
DRAWING NO IPC808471M07V	
SHEET 1 OF 1	UNITS:mm SCALE:1:1 REV:01