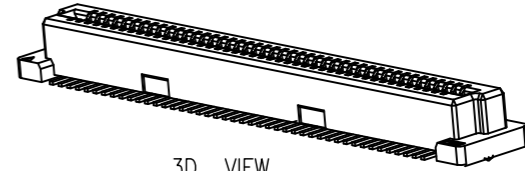


Engineer Drawing

NOTES:

- 1.HUOSING: LCP HIGH-TEMP THERMOPLASTIC UL94V-0 COLOR:BEIGE
- 2.TERMINAL:PHOSPHOR BRONZE

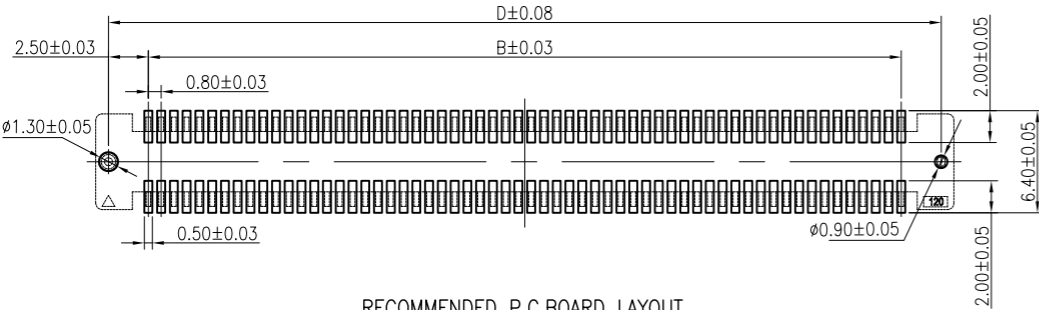
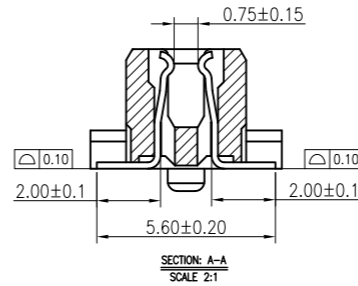
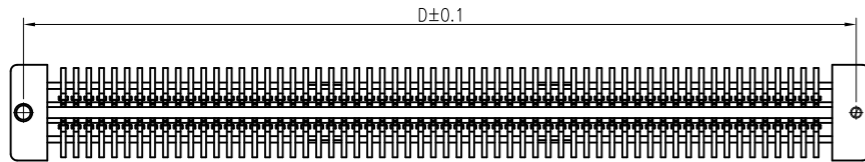
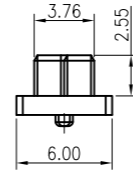
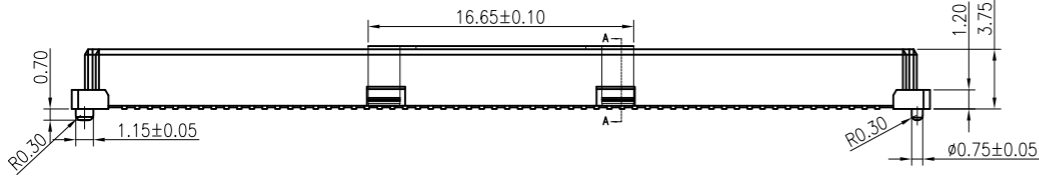
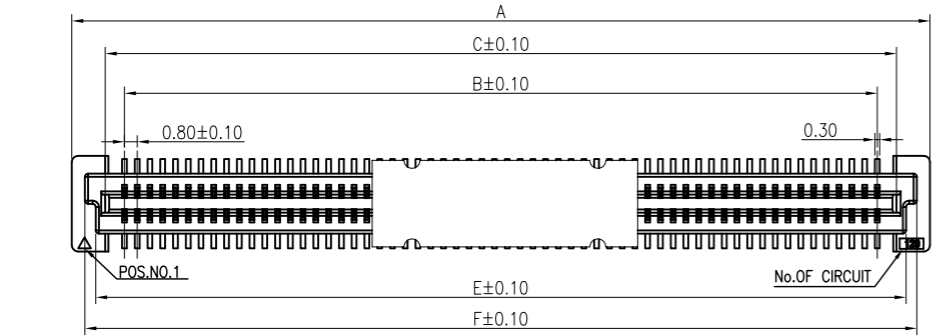


3D VIEW

IPCB 08 371 F XX X X X

① ② ③ ④ ⑤ ⑥ ⑦ ⑧

- ① Series Type
- ② Pitch:0.8mm
- ③ Height
- ④ Connector Type
- ⑤ Pin Code
- ⑥ Rows Code
- ⑦ Serial Code
- ⑧ Other Code



NO.of contacts	Dimensions					
	A	B	C	D	E	F
40	21.80	15.20	17.60	20.20	18.80	20.15
50	25.80	19.20	21.60	24.20	22.80	24.15
60	29.80	23.20	25.60	28.20	26.80	28.15
80	37.80	31.20	33.60	36.20	34.80	36.15
100	45.80	39.20	41.60	44.20	42.80	44.15
120	53.80	47.20	49.60	52.20	50.80	52.15
140	61.80	55.20	57.60	60.20	58.80	60.15
160	69.80	63.20	65.60	68.20	66.80	68.15
180	77.80	71.20	73.60	76.20	74.80	76.15
200	85.80	79.20	81.60	84.20	82.80	84.15

TOLERANCES:
 X = ±0.25
 X.X = ±0.20
 X.XX = ±0.10
 GENERAL ANGLE
 X° = ±1°



www.i-ncp.com

PART NO:
IPCB08371F xx S7V

NAME:
0.8PH H3.7 BTB Female
Receptacle Assembly H5.0

DRAWING NO
IPCB08371F07V

⚙️ SHEET 1 OF 1

UNITS:mm SCALE:1:1 REV.01