

## NOTES:

## 1:MATERIAL

1-1: SUS-304 THICKNE=0.10MM

## 2:SPECIFICATIONS

2-1: RATED CURRENT: 1.0A

2-2: VOLTAGE RATING: 1.5V

2-3: CONTACT RESISTANCE: 80mΩ/MAX

2-4: WELDING THRUST: ≥3KG

2-5: OPERATING TEMPERATURE: -40°C~+85°C

## 3:DURABILITY: 1500 CYCLES

## 4:SALT SPRAY TIME: 24H

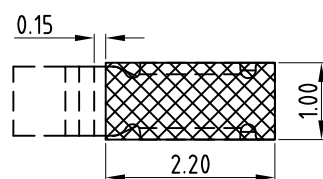
5:ELECTROPLATE: THE NICKEL-PLATED SUBSTRATE IS 50u" MIN

## 6:REQUIREMENTS

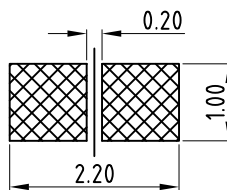
6-1: TERMINAL TO EAT FULL TIN, NOT PEELING, WELDING OBVIOUS COLOR AND OTHER ADVERSE

6-2: ROHS, REACH, HF HALOGEN ADVERSE OF DOMESTIC AND INTERNATIONAL ENVIRONMENTAL REQUIREMENTS

## RECOMMENDED PCB LAYOUT

TOLERANCE: ±0.05MM  
(FOR REFERENCE ONLY)

## METAL MASK T=0.08

TOLERANCE: ±0.05MM  
(FOR REFERENCE ONLY)

深圳市华宇创精密电子有限公司

TOLERANCE: X.X ±0.30 X.XX ±0.25 X.XXX ±0.15 X' ±2" X.X' ±0.5"	DRAWN BY : 陈一鸣	DATE : 2014-02-23	PART NAME: 天线弹片 L3.40*W1.0*H1.5	
	CHECKED BY: 马跃	DATE : 2014-02-23	PART NO. HYCW-TXT341015	MOLD NO.
UNIT: mm [inch] SCALE:1:1 SIZE: A4	APPROVED BY: 邱敏	DATE : 2014-02-23	DRAW NO: HYC-24060061555	
			SHEET NO. 1 OF 1	