

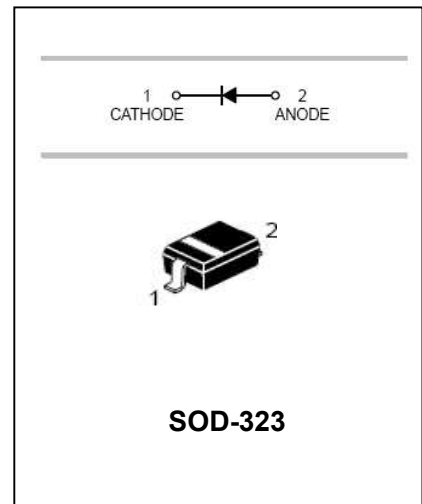
Schottky Barrier Diode

FEATURES

- Extremely low V_F .
- Low stored charge, majority carrier conduction
- Low power loss/high efficient.
- MSL 1.



Lead-free



APPLICATIONS

- For Use In Low Voltage, High Frequency Inverters.
- Free Wheeling, And Polarity Protection Applications.

ORDERING INFORMATION

Type No.	Marking	Package Code
B5818WSX	SK	SOD-323
B5819WSX	SL	SOD-323

MAXIMUM RATING @ $T_a=25^\circ\text{C}$ unless otherwise specified

Parameter	symbol	B5818WSX	B5819WSX	Unit
Non-Repetitive Peak reverse voltage	V_{RM}	30	40	V
Peak repetitive Peak reverse voltage	V_{RRM}	30	40	V
Working Peak Reverse voltage	V_{RWM}			
DC Reverse Voltage	V_R			
RMS Reverse Voltage	$V_{R(RMS)}$	21	28	V
Average Rectified output Current	I_o	1		A
Peak forward surge current@=8.3ms	I_{FSM}	9		A
Power Dissipation	P_d	250		mW
Thermal Resistance Junction to Ambient	$R_{\theta JA}$	500		$^\circ\text{C}/\text{mW}$
Junction and Storage Temperature Range	T_J, T_{STG}	-55 to +125		$^\circ\text{C}$

Schottky Barrier Diode

ELECTRICAL CHARACTERISTICS @ Ta=25°C unless otherwise specified

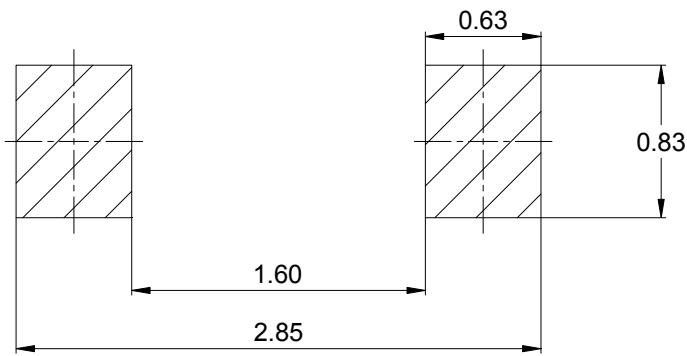
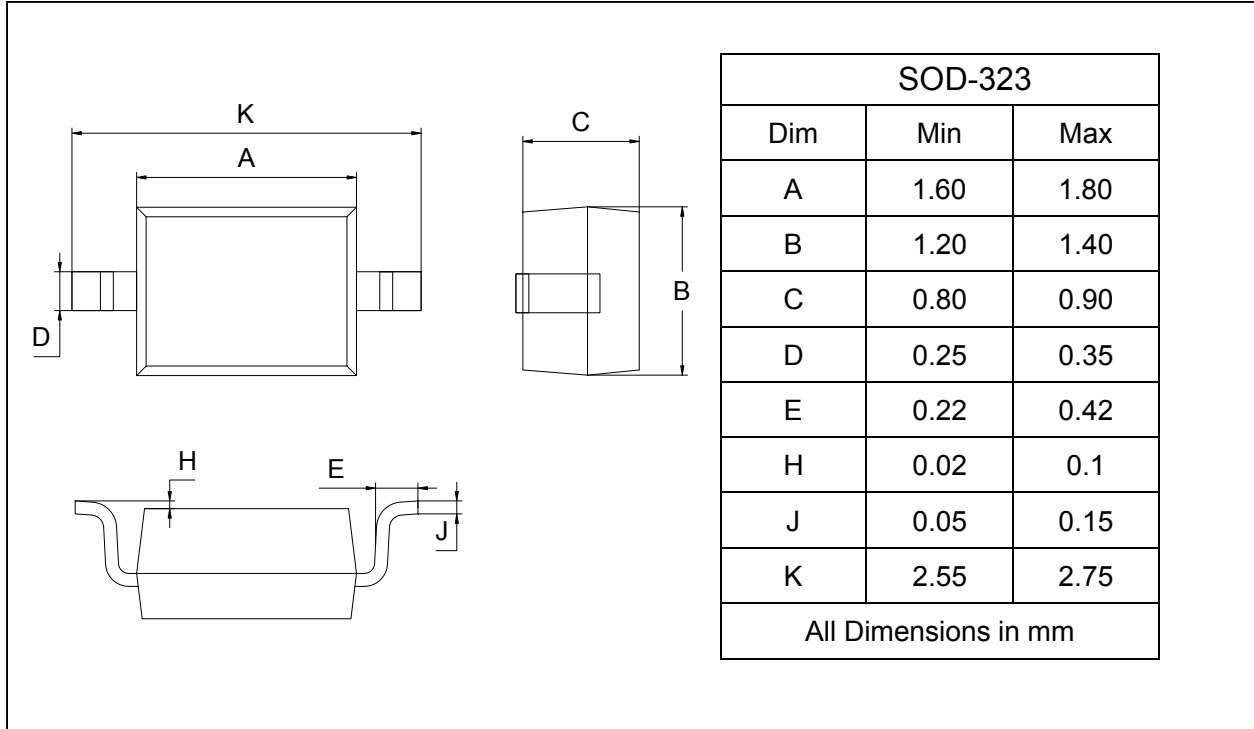
Parameter	Symbol	Test Condition	MIN	MAX	UNIT
Reverse breakdown voltage	$V_{(BR)}$	$I_R=1mA$ B5818WSX B5819WSX	30 40		V
Reverse voltage leakage current	I_R	$V_R=30V$ $V_R=40V$ B5818WSX B5819WSX		1	mA
Forward voltage	V_F	B5818WSX $I_F=1A$ $I_F=3A$		0.55 0.875	V
		B5819WSX $I_F=1A$ $I_F=3A$		0.6 0.9	V
Diode capacitance	C_D	$V_R=4V, f=1MHz$		120	pF

Schottky Barrier Diode

PACKAGE OUTLINE

Plastic surface mounted package

SOD-323



Unit : mm

PACKAGE INFORMATION

Device	Package	Shipping
B5818WSX-B5819WSX	SOD-323	3000/Tape&Reel