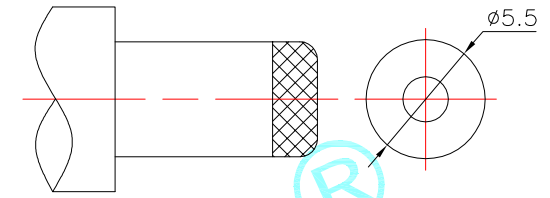
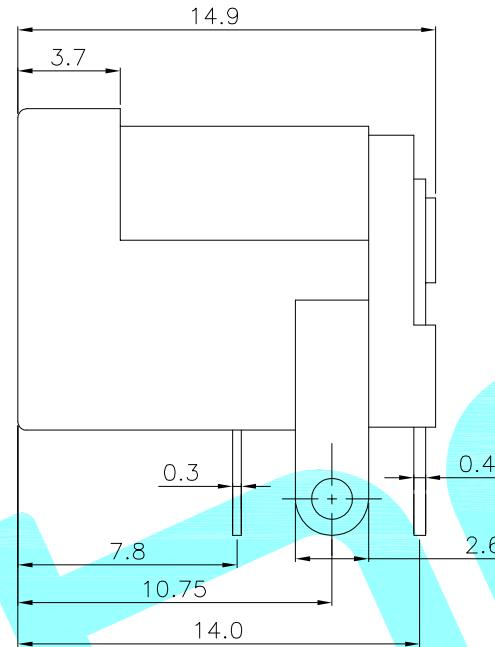
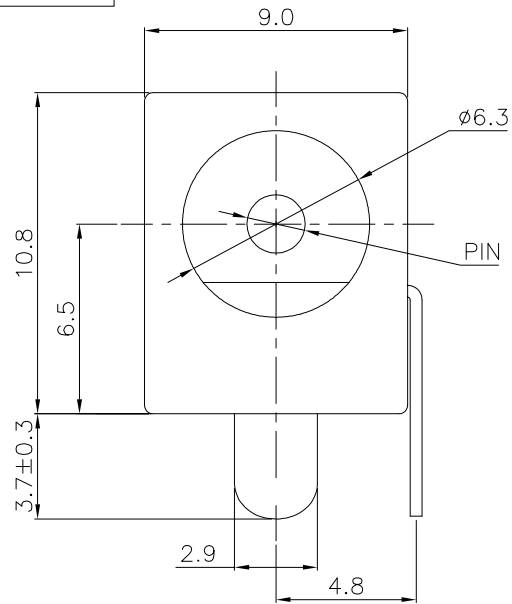


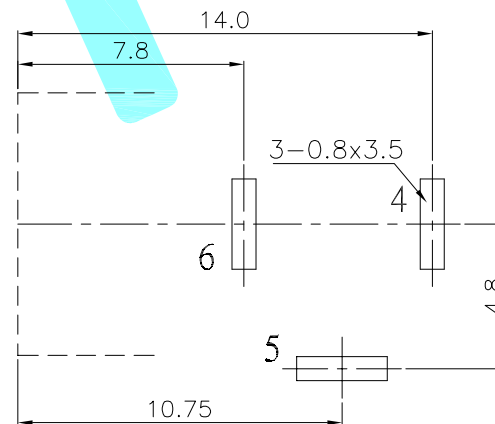
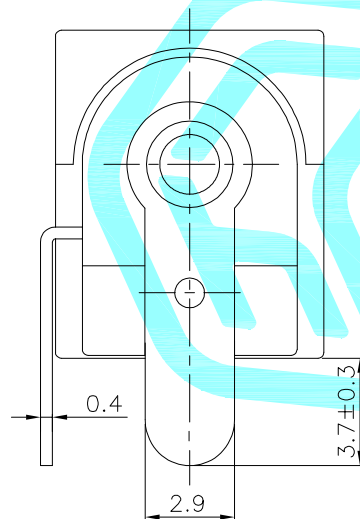
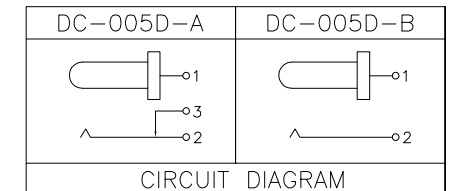
ROHS

Http://www.krhro.com



DC MATE PLUG



Rating: 5A 24V DC  
Contact Resistance: 100 mΩ Max.  
Operating temperature: -25℃~80℃  
Operating force: 3~20N  
Operating Life: 5,000 cycles



P.C.B LAYOUT(Top view)

Model No.	DC-005E-20A	DC-005E-25A
PIN	Ø2.0	Ø2.5

③	PIN	—	1	Brass	Sn Plating	—
②	Terminal	—	3	Phosphor bronze/Brass	Ag Plating	—
①	Housing	—	1	PPA	Black	UL 94V-0
ITEM	PART NAME	TER'NO.	QTY.	MATERIAL	FINISHING	REMARK

APPROVALS			DATE					
DRAWN		LIUCAN	2023.9.19					
CHECKED					TITLE:	阻燃款宽脚5A电流		
APPROVALS					PART NO.	DC-005E		
TOLERANCES ARE			30~以上	±0.30	ANGLE	UNIT: mm	SCALE: 1:1	PROJ: 
			10~30	±0.20				
			5~10	±0.15				
			~ 5	±0.10				
			±2'	DRAWING NO.	_____	SHEET 1 OF 1		

ECN NO.	REV.	DATE.	DESCRIPTION.	CHANGE.	CHECK.	APPRO.
	A		NEW			