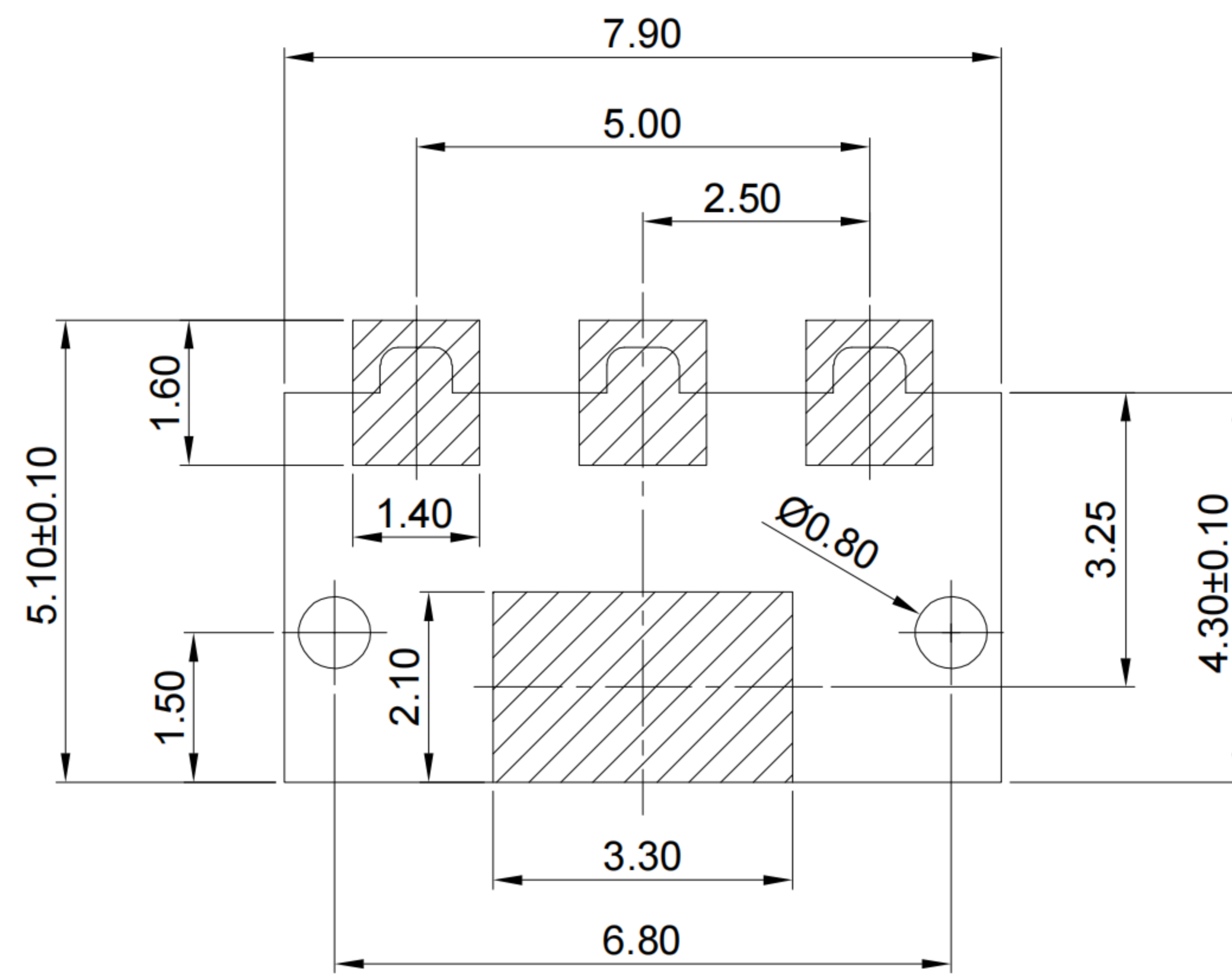
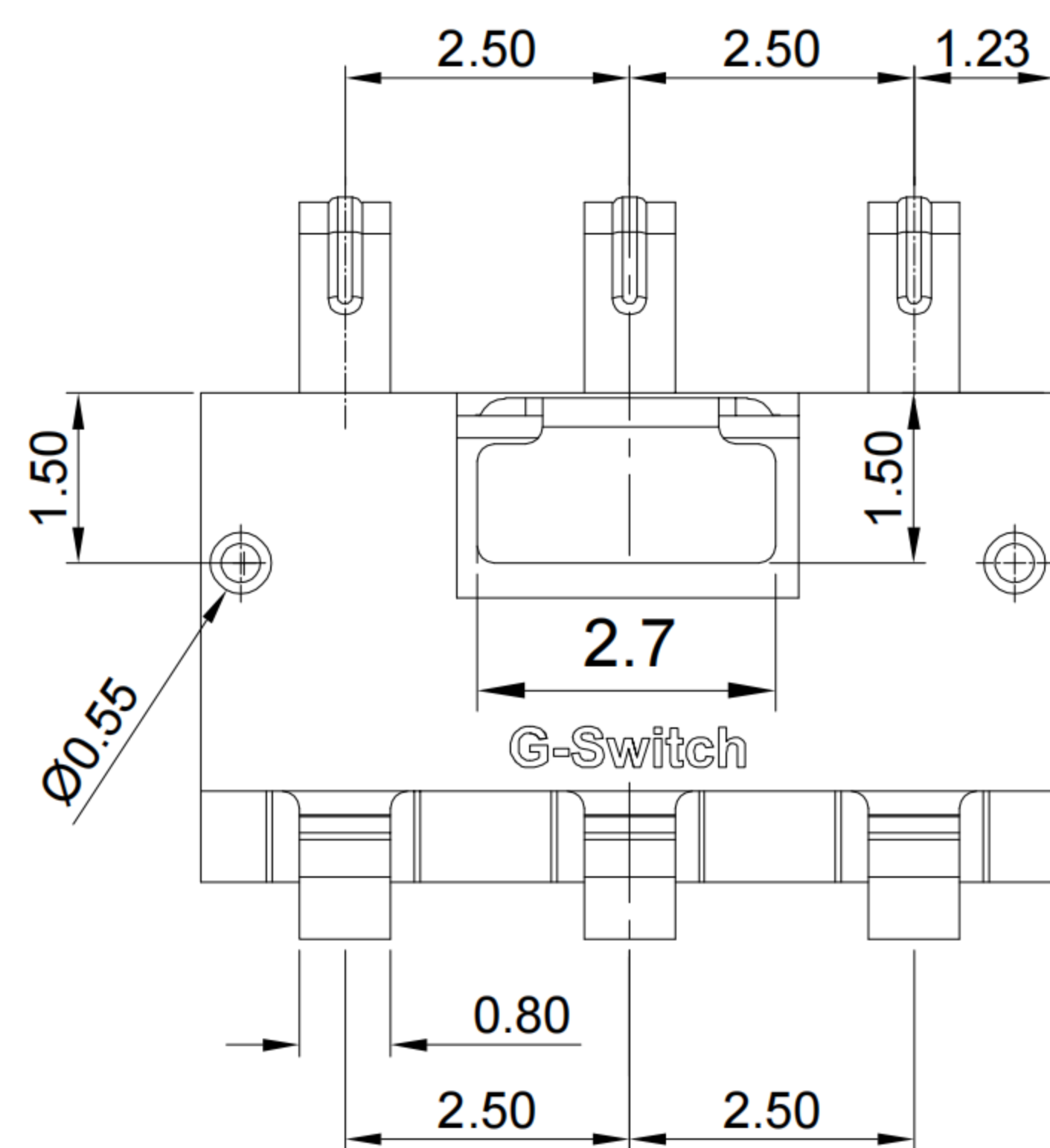


**GT-BT P 250 03 - XXXX A - 002A**

**G-Switch**  
**Series**  
 BT: Battery  
**Type**  
 P: Plug  
**Pitch**  
 250=2.50  
**Pin Q' PY**  
 03=3Pin  
**Serial code**  
**Detail**  
 A:With olumn  
 B:No olumn  
**Height**  
 0540=5.40  
 0600=6.00  
 0650=6.50  
 0700=7.00  
 0750=7.50  
 0800=8.00



RECOMMENDED PCB LAYOUT  
 TOLERANCE:±0.05

- G-Switch Specification:**
- 1.Current rating: 2.0A
  - 2.Rated Voltage: 12V DC
  - 3.Insulation resistance: 500MΩ min
  - 4.Contact resistance: 30mΩ max
  - 5.Dielectric strength: 500V RMS
  - 6.Durability: 3000 cycles
  - 7.Operating temperature range: -40°C ~ +85°C

NO.	PART NAME	MATERIAL	REMARK
2	CONTACT	PHOSPHOR BRONZE	Au ON CONTACT AREA
1	HOUSING	LCP,94V-0	BLACK

**DIMENSIONS LIST**

Pin No.	A	B	C
3P	5.4	3.8	4.6
	6.0	4.4	5.2
	6.5	4.9	5.7
	7.0	5.4	6.2
	7.5	5.9	6.7
	8.0	6.4	7.2

SCALE: 1:1 UNIT: mm  
 SIZE: A4

Unless otherwise  
 General Tolerance:  
 X ±0.35  
 X.x ±0.25  
 X.xx ±0.15  
 X° ±4°  
 X.x° ±3°

Title: Horizontal Pitch2.5 3Pin Battery Conn  
 SMT CH=B 7.50×4.30×H(A)mm

Molde Code: GT-BTP25003-XXXXA-002A

DRAWN	CHECKED	APPROVED	DATE
Jiang	Xia	Chen	2023.12.28



REV: A0 SHEET: 1/1

