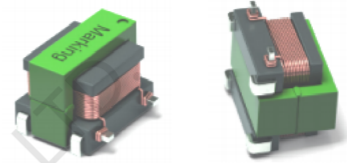
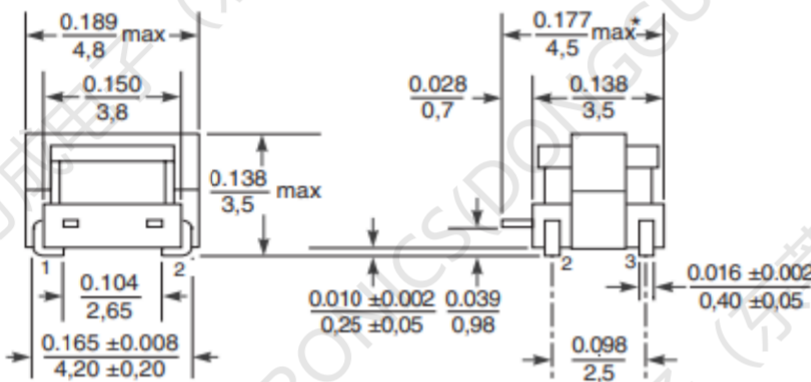


FC-SCT 4.2 –Series Current Sense Transformers

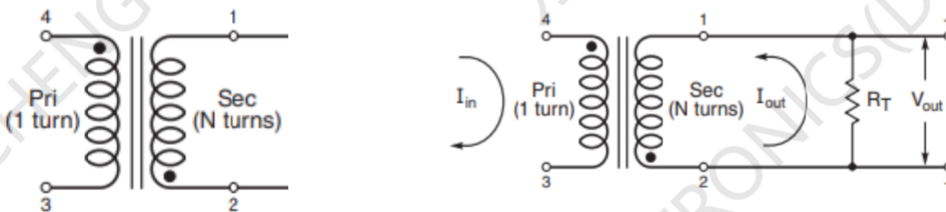
AEC-Q200 Grade 1 qualified (-40° C to +125° C ambient)
 Small surface mount current sensors
 Sensed current up to 7 A; Frequency range up to 1 MHz Very
 low primary DC resistance
 1500 Vrms, one minute isolation (hipot) between windings
 Can also be used in 48 V vehicle electrical systems



1. Dimensions:mm



2.Schematic:

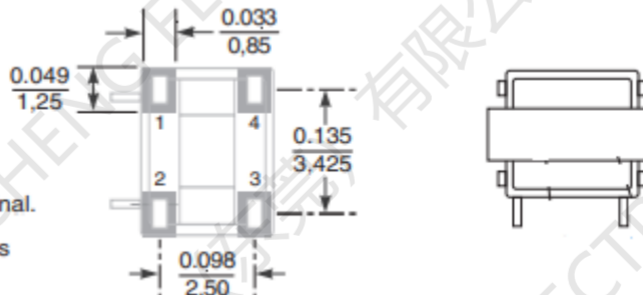


3. Recommended Land Pattern

Dimensions are in $\frac{\text{inches}}{\text{mm}}$

* Includes solder applied to side terminal.

Unless otherwise specified, tolerances are ± 0.004 in / 0,10 mm.



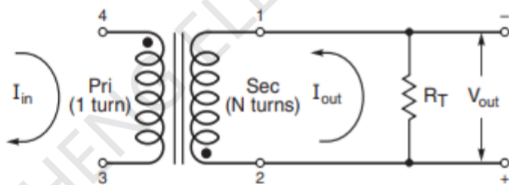
4. ELECTRIC CHARACTERICS)

Electrical Specifications @ 25°C — Operating Temperature -40°C to +125°C

Part Number	Turns Ration	Current Rating _{2 NP} (A)	Secondary Inductance (uH MIN)	DCR (Ω typ)		Hipot (VDC)
				Primary (4-3)	Secondary (2-1)	Np-Ns
FC-SCT4.2-1:20	1:20	7	33	0.003	0.35	1500V
FC- SCT4.2-1:30	1:30	7	74	0.003	0.90	1500V
FC- SCT4.2-1:40	1:40	7	132	0.003	1.60	1500V
FC- SCT4.2-1:50	1:50	7	205	0.003	2.50	1500V
FC- SCT4.2-1:60	1:60	7	295	0.003	3.60	1500V
FC- SCT4.2-1:70	1:70	7	400	0.003	4.60	1500V
FC- SCT4.2-1:100	1:100	7	820	0.003	9.50	1500V
FC- SCT4.2-1:125	1:125	7	1280	0.003	13.0	1500V
FC- SCT4.2-1:150	1:150	7	1800	0.003	21.0	1500V

Inductance measured between secondary pins at 100 kHz, 0.1 Vrms,
 Ambient temperature -40° C to +125° C
 Storage temperature Component: -40° C to +85° C

5. Typical Circuit



6. Temperature Rise vs Current

