

# 2.4G 内置FPC天线 AIWF018

## 性能参数 PERFORMANCE PARAMETER

### 1.电气参数 Electrical Characteristics

1	频率范围 Frequency Range	2400-2500MHz
2	驻波比 V. S. W. R	$\leq 3$
3	最大增益 Gain	3.43dBi
4	最大效率 Efficiency	61.29%
5	阻抗 Impedence	50 $\Omega$
6	极化方式 Polarization	线极化
7	接口类型 Interface type	一代端子

### 2.机械参数 Mechanical parameters

1	尺寸 Measure	FPC: 50.85*8.5mm/ Cable: 200.0mm* $\Phi$ 1.13mm
2	颜色 Colour	黑

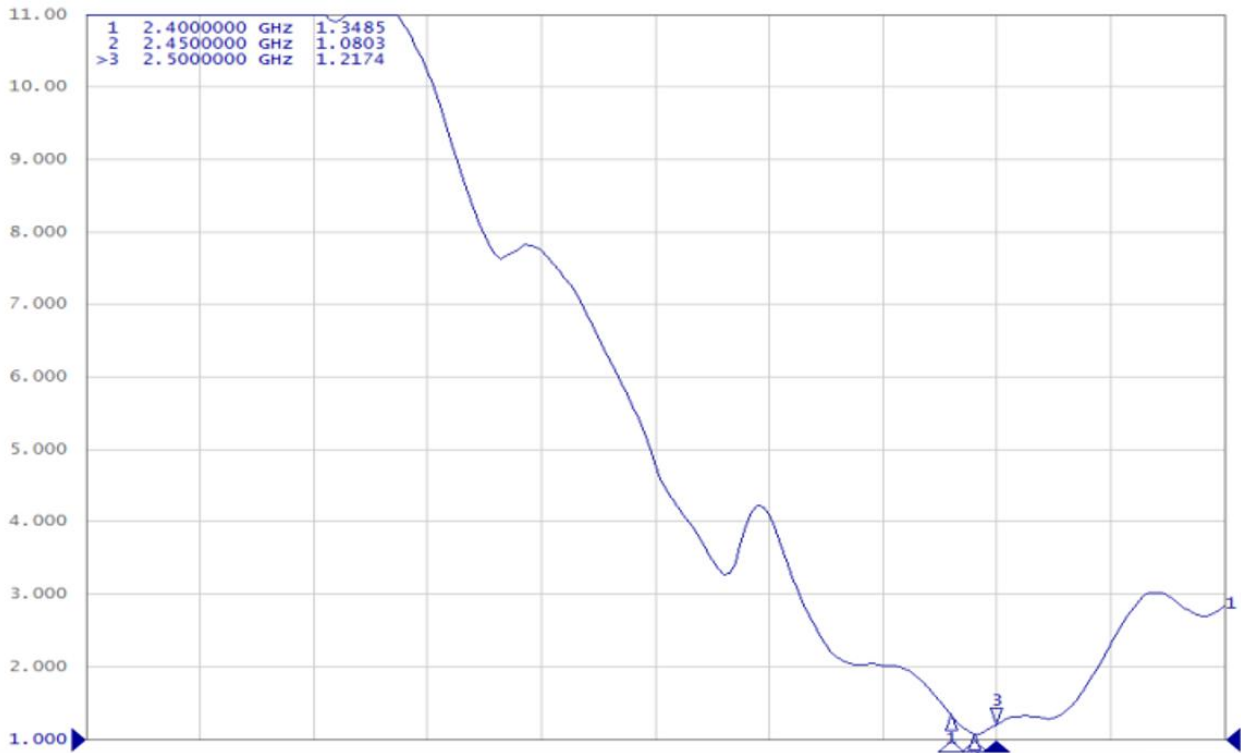
### 3.环境参数 Environment Condition

1	工作温度 Working Temp	-30 $^{\circ}$ C~80 $^{\circ}$ C
---	-------------------	----------------------------------

## 测试图表 TESTING CURVE

### 1.性能测试 Performance test

#### 1.1 驻波比 V.S.W.R



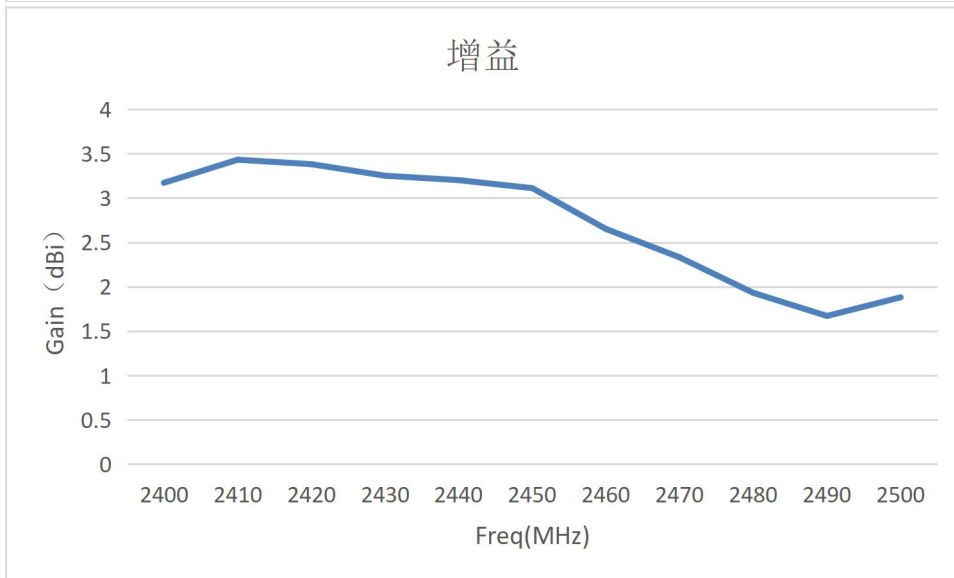
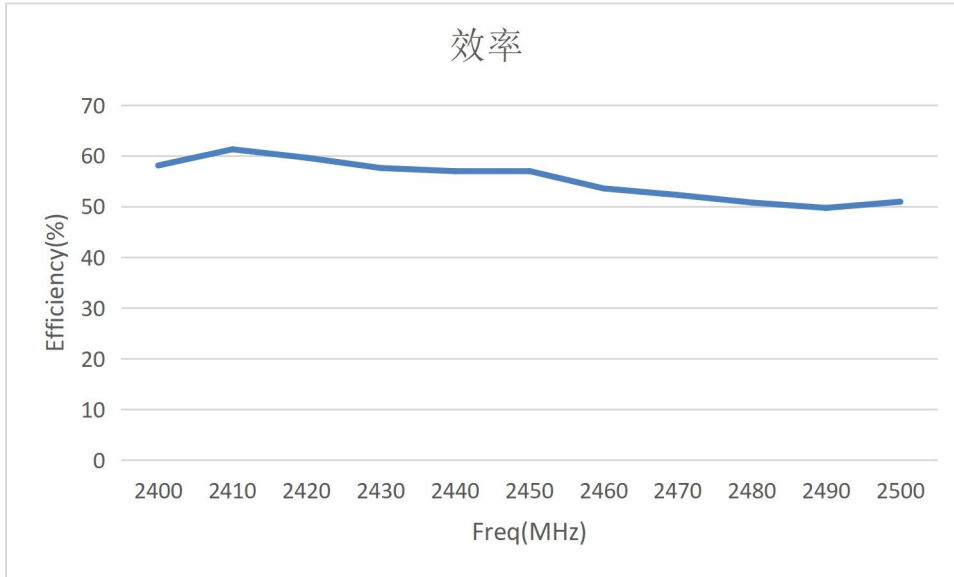
#### 数据表 Data list

Freq	2.4	2.45	2.5
VSWR	1.35	1.08	1.22

## 测试图表 TESTING CURVE

### 2. 无源测试 Passive testing

#### 2.1 效率及增益 Efficiency and Gain



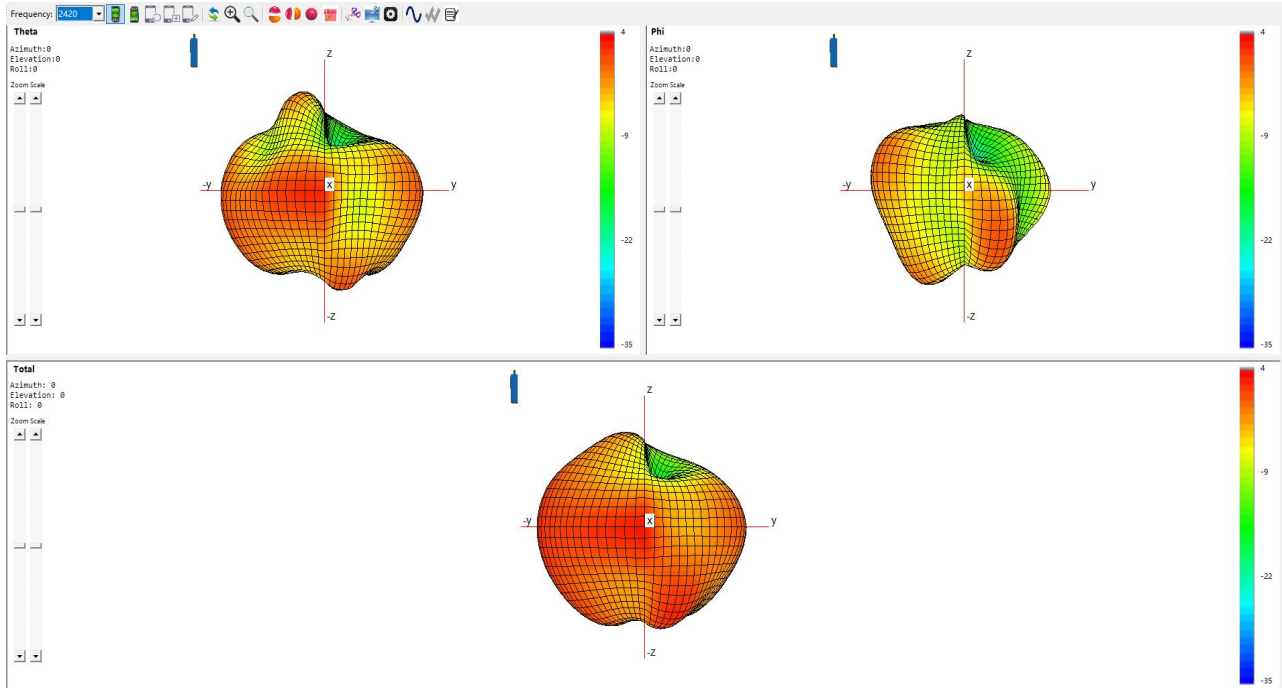
## 测试图表 TESTING CURVE

### 效率及增益数据表 Efficiency and Gain Data list

Freq(MHz)	Efficiency(%)	Gain (dBi)
2400	58.1	3.17
2410	61.29	3.43
2420	59.63	3.38
2430	57.6	3.25
2440	56.98	3.2
2450	57.01	3.11
2460	53.58	2.65
2470	52.29	2.33
2480	50.79	1.93
2490	49.74	1.67
2500	50.96	1.88

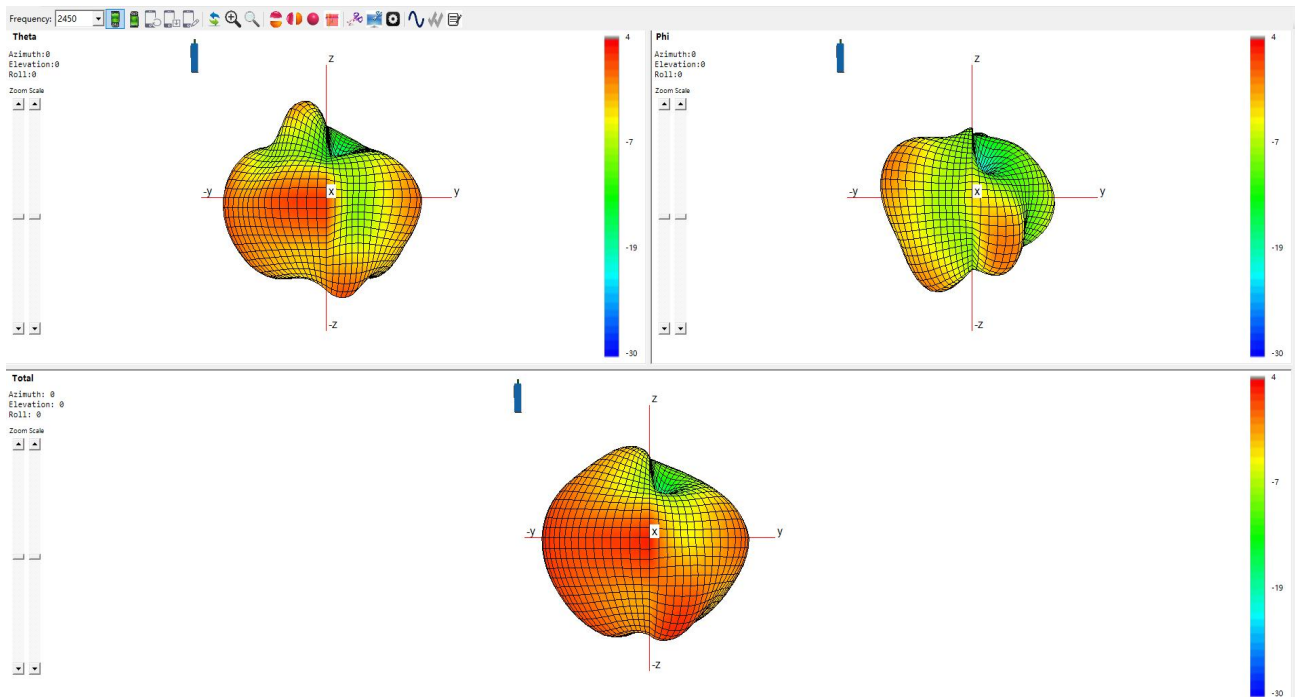
## 测试图表 TESTING CURVE

### 2.2 3D 图 3D Map



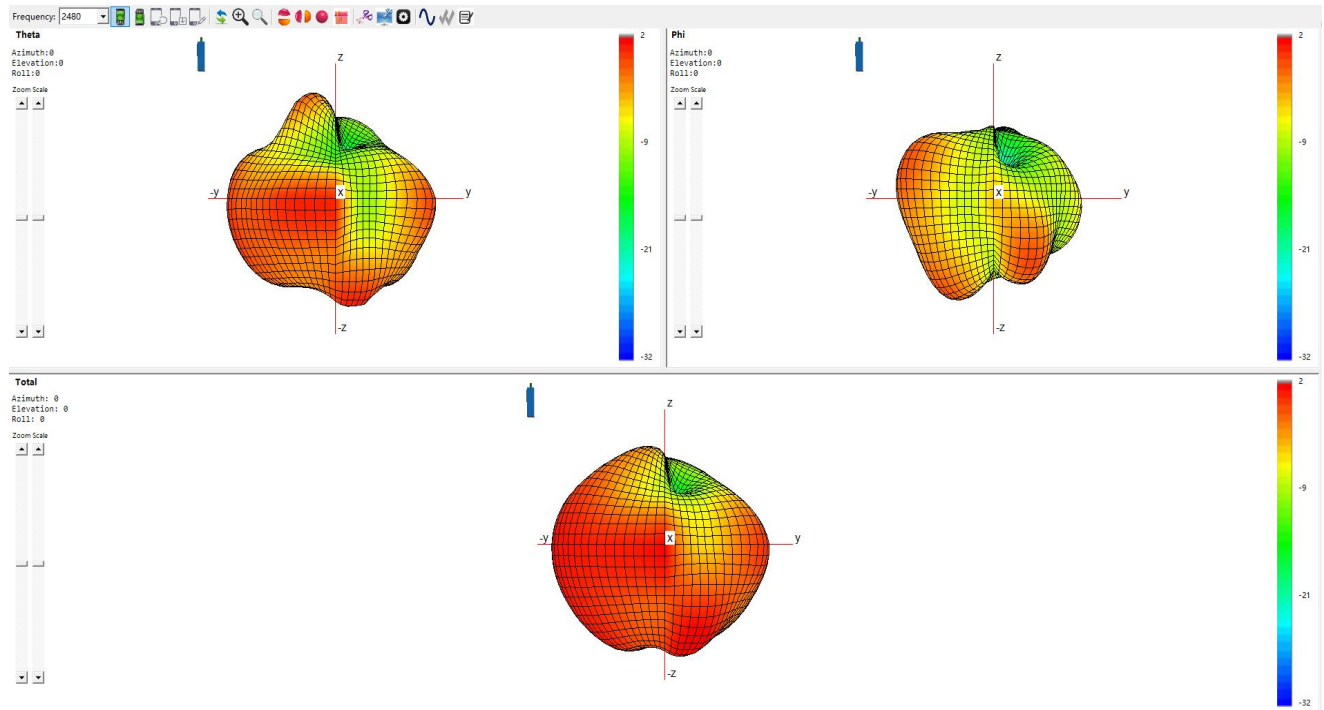
2420MHz

Gain=3.38dBi



2450MHz

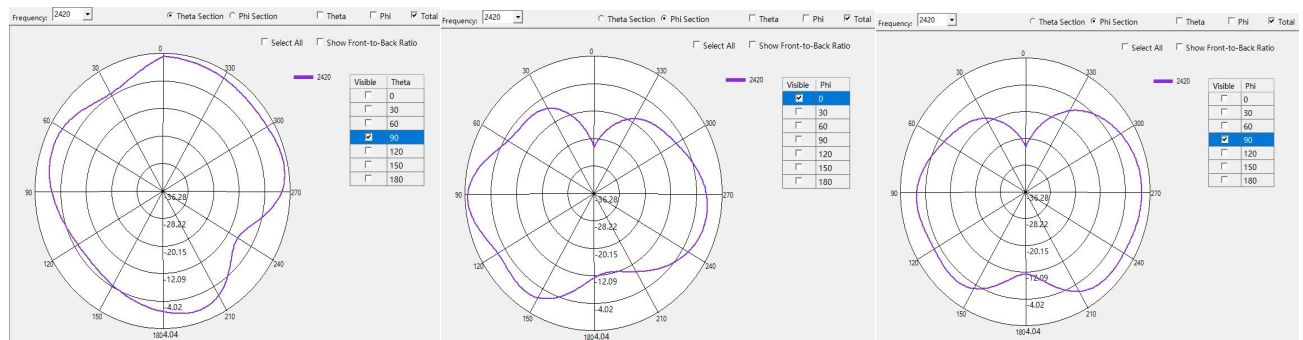
Gain=3.11dBi



2480MHz

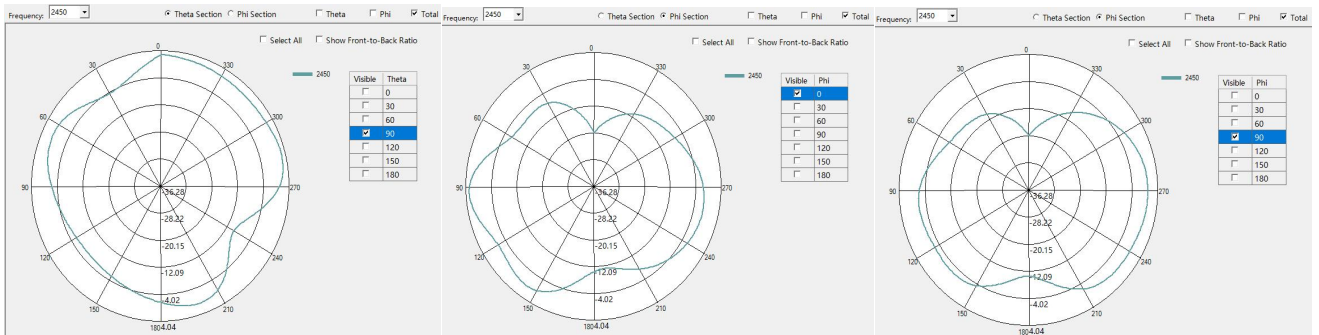
Gain=1.93dBi

### 2.3 2D 图 2D Figure



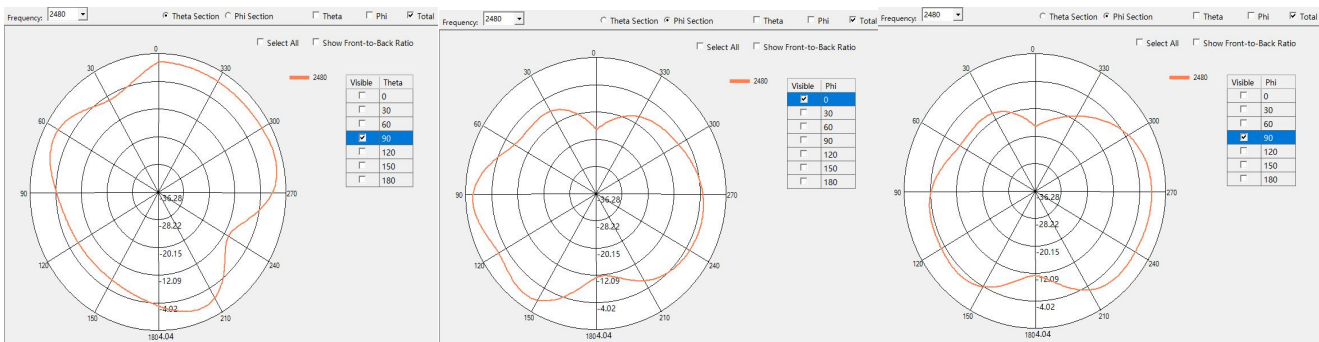
2420MHz

Gain=3.38dBi



2450MHz

Gain=3.11dBi

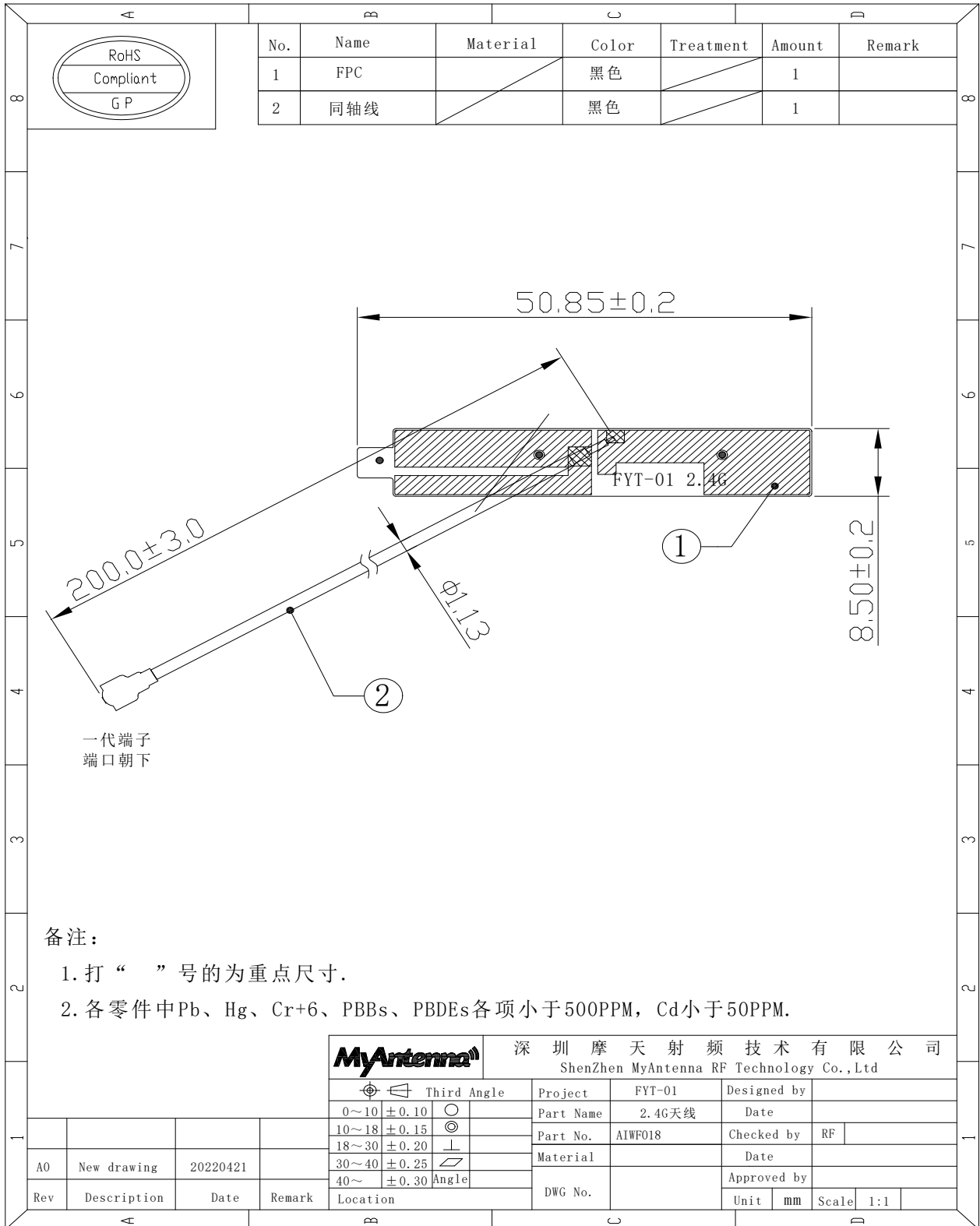


2480MHz

Gain=1.93dBi

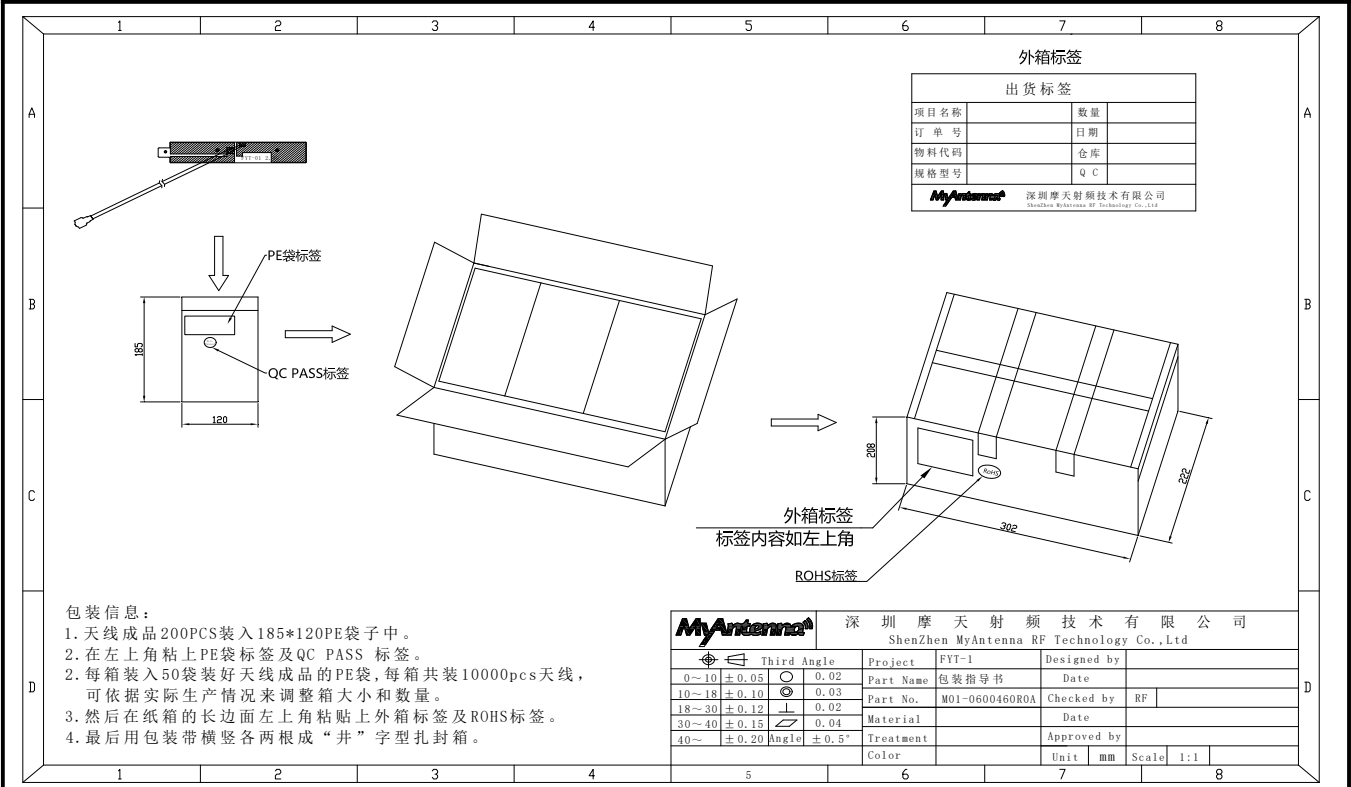
### 3. 有源测试 Active testing (无)

## 工程图 SCHEDULE DRAWING





## 包装示意图 PACKING DIAGRAM



天线实物图 ANTENNA PHYSICAL DIAGRAM

