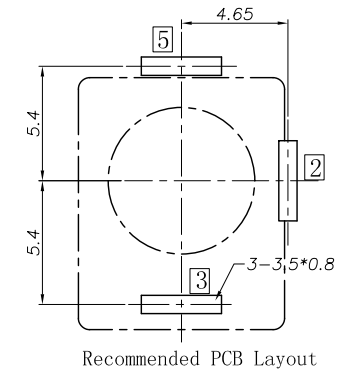
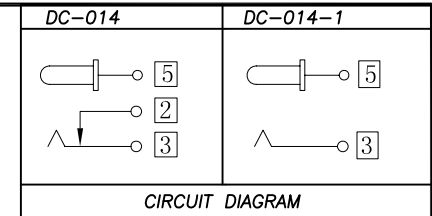
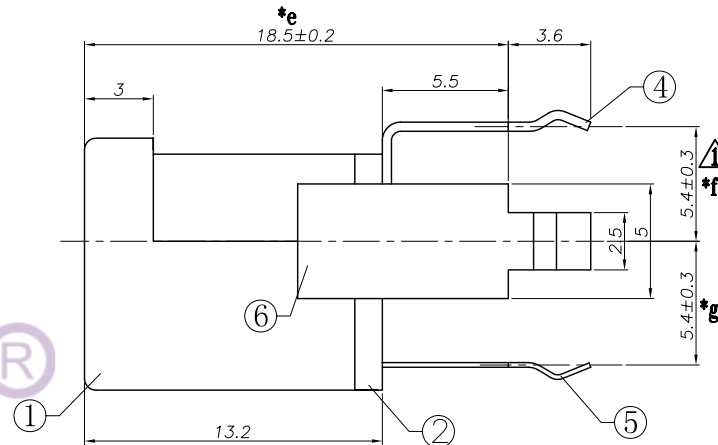
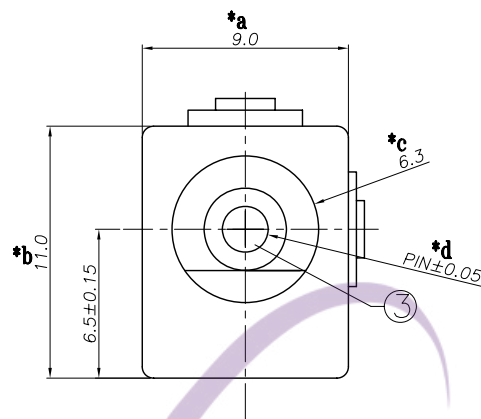
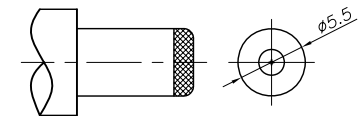
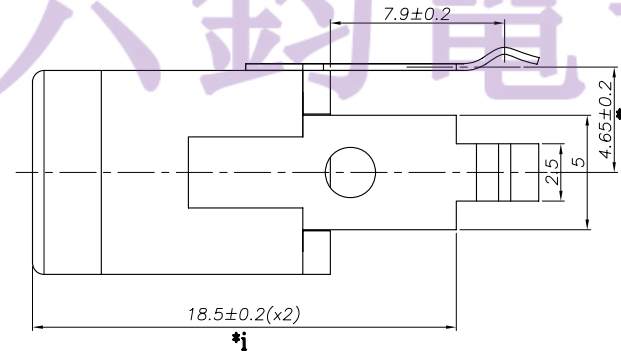


PIN	ø2.0	ø2.5





SPECIFICATION

- Rating : DC 24V 3A;
- Contact resistance: $\leq 50\text{m}\Omega$;
After test: $\leq 200\text{m}\Omega$
- Insulation resistance: $\geq 100\text{M}\Omega$ (DC500V);
After test: $\geq 50\text{M}\Omega$
- Withstand voltage: 500VAC ;
- Insertion and extraction force: 3-30N;
- life test: 5,000 cycles;
- Operation temperature range: $-20^{\circ}\text{C} \sim 70^{\circ}\text{C}$;
- Preservative temperature range: $-40^{\circ}\text{C} \sim 85^{\circ}\text{C}$;
- Sign "*" is importance dimension



DC MATE PLUG

					TOLERANCE UNLESS SPECIFIED								
					UP TO 5mm:±0.1	ANGULAR	A1	2021.07.08	⚠ 修正脚位尺寸为5.4			GYW	
					ABOVE 5mm:±0.2	±1°	A0	2020.02.04	首次发行			GYW	
							NO	DATE	REVISIONS			BY	APPD
					TITLE: DC JACK			UNIT : MM	ROHS	DWN			
					MODEL: DC-014 2.0			SCALE: 1:1	COMPLIANT	CHK'D			
					东莞市六钧电子五金有限公司					APPD			
										PRO.AGL:			REV :A1
6	DC014 2#CURVE PIECE	BRASS	1	Sn-PLATED									
5	DC014 3#SPRING	SUS	1	Sn-PLATED									
4	DC014 5#FLAT PIECE	BRASS	1	Sn-PLATED									
3	DC015G PIN	BRASS	1	Ni-PLATED									
2	DC014 COVER	PHENOLIC RESIN	1	YELLOW									
1	DC014 CASE	PBT	1	BLACK									
NO.	PART NAME	MATERIAL	QTY	FINISHING									