

H3-MABA-011028

600-1700MHz 50Ω 1:1 Balun

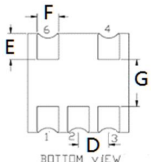
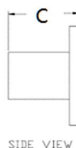
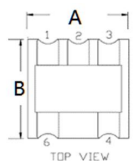
APPLICATIONS

Ideally suited for high volume cellular and wireless application.

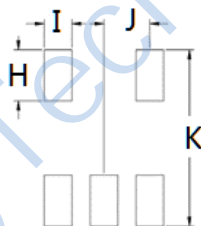
FEATURES

- Surface mount
- Impedance ratio: 1:1
- Available on tape and reel
- RoHS compliant and Pb free
- 260°C reflow compatible

DIMENSIONS



Land Pattern



A	B	C	D	H	I	J
4.21	4.21	2.63	1.27	1.40	0.76	1.27
E	F	G		K		
1.11	0.90	2.00		4.83		

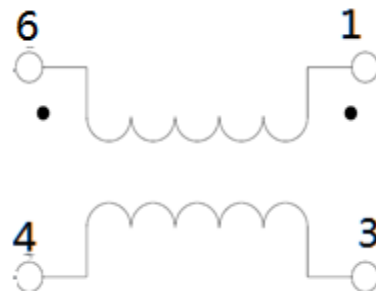
Unless otherwise stated dimensions are in mm

Tolerance: .xx ± 0.25, .xxx ± 0.05

ELECTRICAL SPECIFICATIONS@25°C:

Parameters (P#: ENA PORT)	frequency band	Min.	Typ.	Max.	Unit
Port Impedance, Z0 (P1 / P2 / P3)			50/ 25/ 25		Ohm
Insertion Loss (Pin6 - Pin1)	600-1000MHz		0.3	0.6	dB
	1000-1300MHz		0.5	0.8	dB
	1300-1700MHz		0.8	1.3	dB
Insertion Loss (Pin6 - Pin3)	600-1000MHz		0.4	0.6	dB
	1000-1300MHz		0.3	0.6	dB
	1300-1700MHz		0.3	1.0	dB
Amplitude Balance	600-1000MHz		0.1	0.5	dB
	1000-1300MHz		0.2	0.9	dB
	1300-1700MHz		0.5	1.2	dB
Phase Balance (Nominal 180°)	600-1000MHz		1	4	°
	1000-1300MHz		1.0	4	°
	1300-1700MHz		0.1	5	°
Input Return Loss	600-1000MHz	15.0	30.0		dB
	1000-1300MHz	14.0	28.0		dB
	1300-1700MHz	13.0	22.0		dB

FUNCTIONAL SCHEMATIC



PIN CONFIGURATION

Pin No.	Function
1	Secondary Dot
2	Not Connected
3	Secondary
4	Primary
6	Primary Dot

ABSOLUTE MAXIMUM RATINGS

Parameter	Value
Input Power	250mW MAX
DC Current	30mA MAX
Operating Temperature Range	-40 to 85°C

Tel: +86-28-85589664

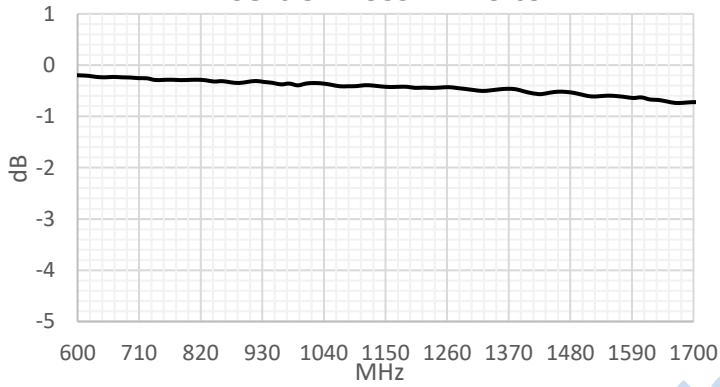
E-mail: mr_li@henglitaitech.com

Web: www.hltchips.com

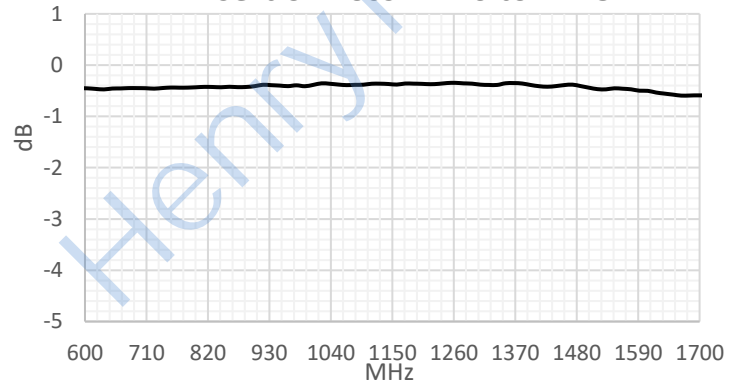
Adress:No.198 Tianqin East Street, Gaoxin West District, Chengdu City

TEST CURVE

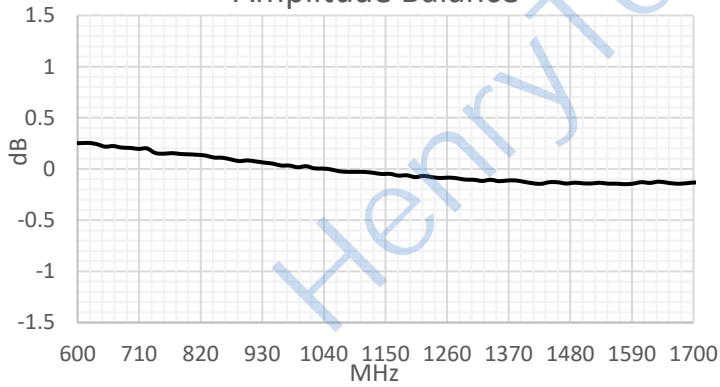
Insertion Loss: Pin 6 to Pin 1



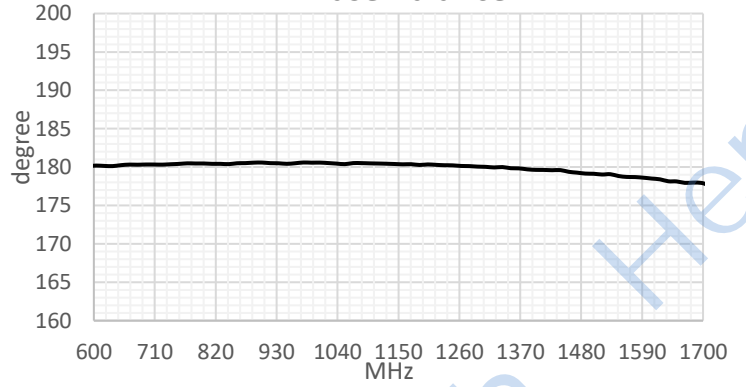
Insertion Loss: Pin 6 to Pin 3



Amplitude Balance



Phase Balance



Input Return Loss: Pin 6

