

H3-MAPD-010638-C2WSOT

5-1600MHz 75Ω 2 Way Power Divider

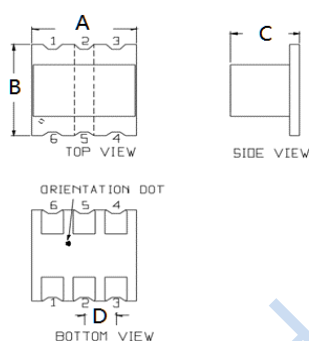
APPLICATIONS

- Ideally suitable for CATV applications.

FEATURES

- Surface mount
- 2 Way 0 degree
- 260°C reflow compatible
- RoHS compliant and Pb free
- Available on tape and reel

DIMENSIONS

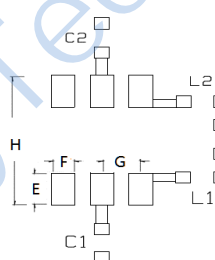


A	B	C
4.30	4.30	3.00
D		
1.27		

Unless otherwise stated dimensions are in mm

Tolerance: .xx ± 0.25, .xxx ± 0.05

PCB LAYOUT



E	F	G
1.40	0.76	1.27
H		
4.83		

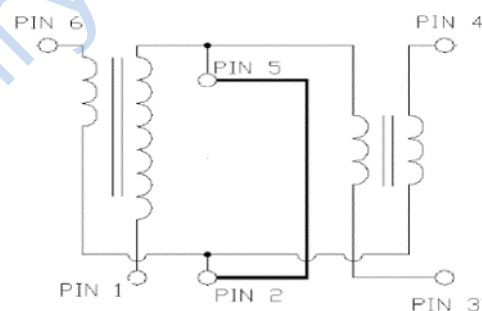
Suggest:

C1,C1=0.5pF

R1 L1,L2=8.2nH

R1=240Ω

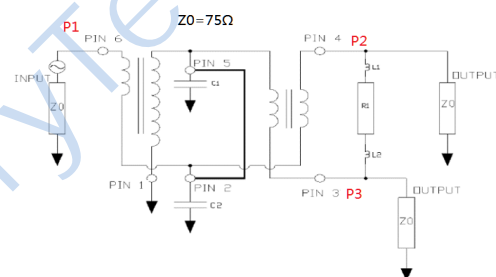
FUNCTIONAL SCHEMATIC



PIN CONFIGURATION

Pin No.	Function
1	Ground
2	External 0.5 pF Capacitor
3	Output 2
4	Output 1
5	External 0.5 pF Capacitor
6	Input

APPLICATION & TEST CIRCUIT



Suggest:

C1,C1=0.5pF

L1,L2=8.2nH

R1=240Ω

ELECTRICAL SPECIFICATIONS@25°C:

Parameters (P#: ENA PORT)	frequency band	Min.	Typ.	Max.	Unit
Port Impedance, Z0 (P1 / P2 / P3)			75 / 75 / 75		Ohm
Insertion Loss (Above 3dB)	5-1002MHZ		0.6	1.0	dB
	1003-1600MHZ		0.8	1.6	dB
Input Return Loss	5-1002MHZ	18.0	39.0		dB
	1003-1600MHZ	16.0	22.0		dB
Output Return Loss	5-1002MHZ	18.0	28.0		dB
	1003-1600MHZ	15.0	18.0		dB
Isolation	5-870MHZ	24.0	30.0		dB
	871-1002MHZ	24.0	31.0		dB
	1003-1600MHZ	22.0	31.0		dB
Amplitude Balance	5-1002MHZ		0.3	0.6	dB
	1003-1600MHZ		0.3	0.8	dB
Phase Balance	5-1002MHZ		0.8	4	Deg
	1003-1600MHZ		1	6	Deg

ABSOLUTE MAXIMUM RATINGS

Parameter	Value
Input RF Power	1W Max
Internal Load Dissipation	0.125W Max
Operating Temperature Range	-40 to 85°C

Tel: +86-28-85589664

E-mail: mr\_li@henglitaitech.com

Web: www.hltchips.com

Adress:No.198 Tianqin East Street, Gaoxin West District, Chengdu City

## TEST CURVE

