

H3-TP-103-PIN

0.5-1000MHz 50Ω 1:4 Balun

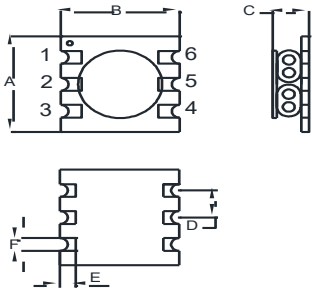
• APPLICATIONS

• Ideally suitable for PCS, wideband push-pull amplifiers and cellular applications.

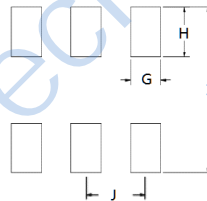
• FEATURES

- Surface mount
- Impedance ratio: 1:4
- Balanced transmission line
- RoHS compliant
- 260°C reflow compatible

DIMENSIONS



Land Pattern



A	B	C
9.00	9.00	3.8Max
D	E	F
2.54	1.20	1.20

G	H	I
1.30	2.15	10.00
J		
2.54		

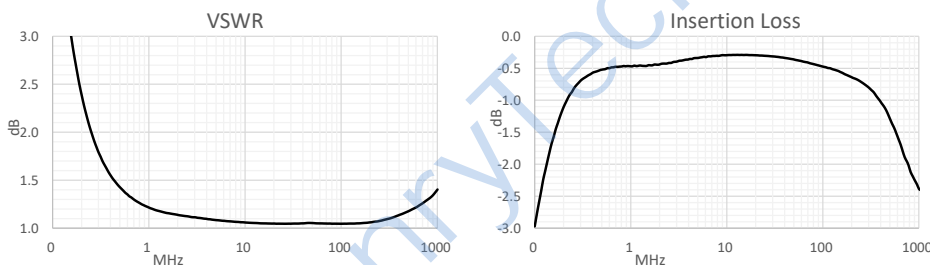
Unless otherwise stated dimensions are in mm

Tolerance: .xx ± 0.25, .xxx ± 0.05

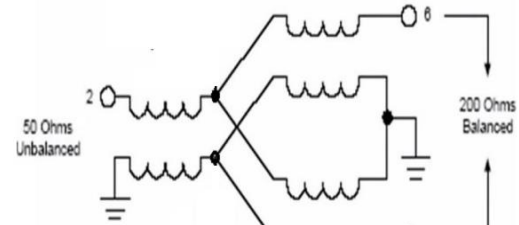
ELECTRICAL SPECIFICATIONS@25°C:

Parameters (P#: ENA PORT)	frequency band	Min.	Typ.	Max.	Unit
Impedance(Input: Unbalanced)			50		Ohm
Impedance(Output: Balanced)			200		Ohm
Insertion Loss	10 - 50 MHz		0.3	0.6	dB
VSWR	2 - 500 MHz			1.4	
	500 k - 1 GHz			2.0	
Input Power	500 k - 1 MHz			1	W
	1 - 5 MHz			1.5	W
	5M - 1 GHz			3	W
Rise Time (10% - 90%)			0.18		ns
Droop (10%)			160		ns

TEST CURVE



FUNCTIONAL SCHEMATIC



Pin Configuration

Pin No.	Function
1	Ground
2	Primary Dot
3	Ground
4	Secondary
5	Ground
6	Secondary Dot

ABSOLUTE MAXIMUM RATINGS

Parameter	Value
Operating Temperature Range	-55 to 85°C
Storage Temperature Range	-55 to 100°C

Tel: +86-28-85589664

E-mail: mr_li@henglitaitech.com

Web: www.hltchips.com

Adress: No.198 Tianqin East Street, Gaoxin West District, Chengdu City