

H3-MABA-007871-CT1A40

5-3000MHz 50Ω 1:1 Balun

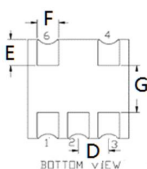
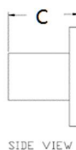
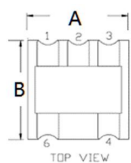
APPLICATIONS

Ideally suited for high volume cellular and wireless application.

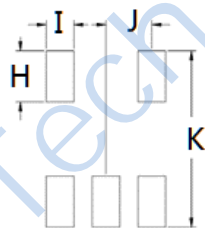
FEATURES

- Surface mount
- Impedance ratio: 1:1
- Available on tape and reel
- RoHS compliant and Pb free
- 260°C reflow compatible

DIMENSIONS



Land Pattern



A	B	C	D	H	I	J
4.21	4.21	2.63	1.27	1.40	0.76	1.27
E	F	G		K		
1.11	0.90	2.00		4.83		

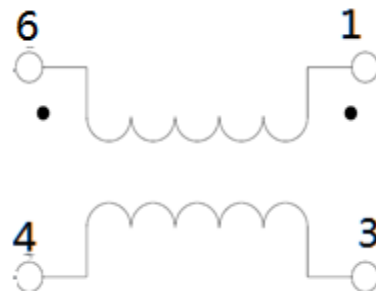
Unless otherwise stated dimensions are in mm

Tolerance: .xx ± 0.25, .xxx ± 0.05

ELECTRICAL SPECIFICATIONS@25°C:

Parameters (P#: ENA PORT)	frequency band	Min.	Typ.	Max.	Unit
Port Impedance, Z0 (P1 / P2 / P3)			50/ 25/ 25		Ohm
Insertion Loss	5-50MHz		0.3	2.5	dB
	50-975MHz		0.4	0.6	dB
	975-1525MHz		0.3	1.0	dB
	1525-2150MHz		0.7	2.3	dB
	2150-3000MHz		2.5	6.0	dB
Amplitude Balance	5-50MHz		0.5	0.8	dB
	50-975MHz		0.2	0.7	dB
	975-1525MHz		0.2	0.7	dB
	1525-2150MHz		0.4	0.9	dB
	2150-3000MHz		0.1	1.6	dB
Phase Balance (Nominal 180°)	5-50MHz		6.5	50	°
	50-975MHz		0.1	5.0	°
	975-1525MHz		0.1	4	°
	1525-2150MHz		3	12	°
	2150-3000MHz		13	35	°
Input Return Loss	5-50MHz	12.0	28.0		dB
	50-975MHz	15.0	23.0		dB
	975-1525MHz	13.0	21.0		dB
	1525-2150MHz	6.0	12.0		dB
	2150-3000MHz	3.0	6.0		dB

FUNCTIONAL SCHEMATIC



PIN CONFIGURATION

Pin No.	Function
1	Secondary Dot
2	Not Connected
3	Secondary
4	Primary
6	Primary Dot

ABSOLUTE MAXIMUM RATINGS

Parameter	Value
Input Power	250mW MAX
DC Current	30mA MAX
Operating Temperature Range	-40 to 85°C

Tel: +86-28-85589664

E-mail: mr_li@henglitaitech.com

Web: www.hltchips.com

Adress: No.198 Tianqin East Street, Gaoxin West District, Chengdu City

TEST CURVE

