

H3-MABACT0040

5-1218MHz 75Ω 1:1 Balun

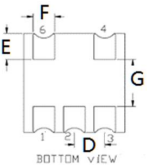
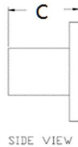
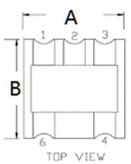
• APPLICATIONS

• Ideally suited for high volume CATV/Broadband applications.

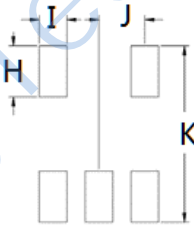
• FEATURES

- Surface mount
- Impedance ratio: 1:1
- Available on tape and reel
- RoHS compliant and Pb free
- 260°C reflow compatible

DIMENSIONS



Land Pattern



A	B	C	D	H	I	J
4.21	4.21	2.70Max	1.27	1.40	0.76	1.27
E	F	G		K		
1.11	0.90	2.00		4.83		

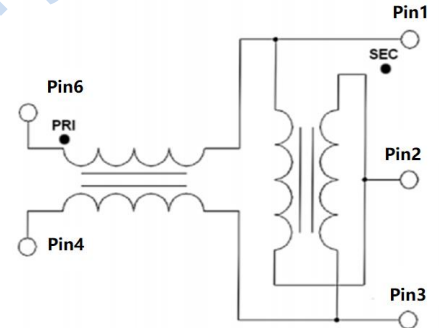
Unless otherwise stated dimensions are in mm

Tolerance: .xx ± 0.25, .xxx ± 0.05

ELECTRICAL SPECIFICATIONS@25°C:

Parameters (P#: ENA PORT)	frequency band	Min.	Typ.	Max.	Unit
Port Impedance, Z ₀			75		Ohm
Insertion Loss	5-1218MHz		1.0	1.6	dB
Amplitude Balance	5-1000MHz		0.7	±0.5	dB
	1000-1218MHz			±0.7	dB
Phase Balance (Nominal 180°)	5-1218MHz		2.5	±10	°
Input Return Loss	5-1218MHz	16	22		dB

FUNCTIONAL SCHEMATIC

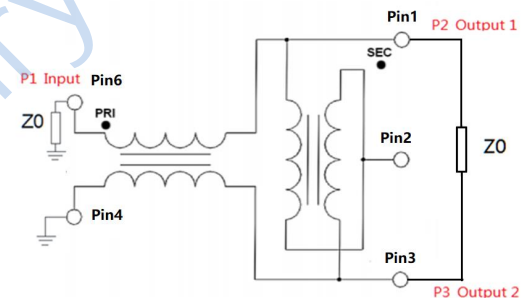


PIN CONFIGURATION

Pin No.	Function
1	Secondary Dot (output 1)
2	Secondary center tap (ground)
3	Secondary (output 2)
4	Primary (ground)
6	Primary Dot (input)

APPLICATION & TEST CIRCUIT

Z₀=75 Ω

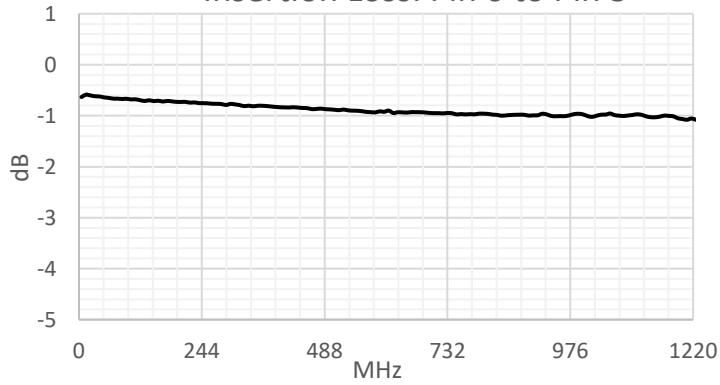


ABSOLUTE MAXIMUM RATINGS

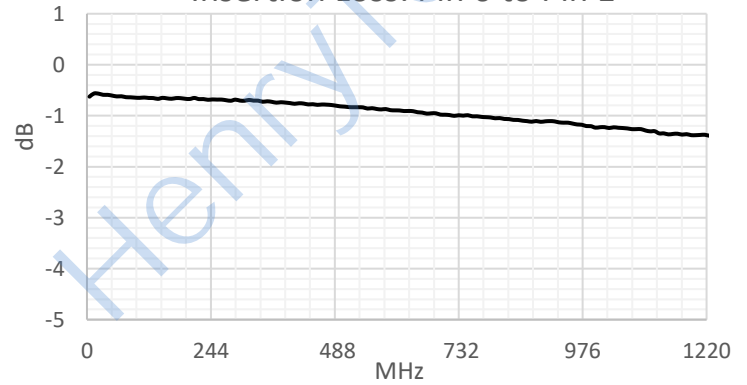
Parameter	Value
Input Power	500mW MAX
DC Current	500mA MAX
Operating Temperature Range	-40 to 105°C

TEST CURVE

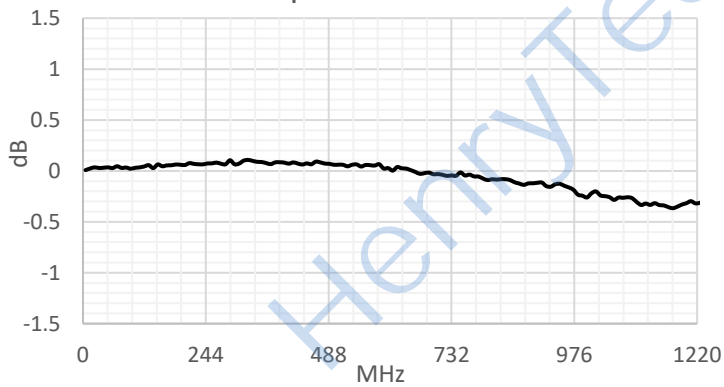
Insertion Loss: Pin 6 to Pin 3



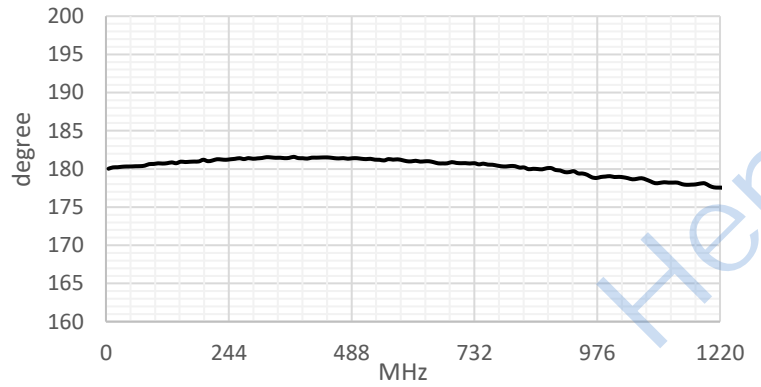
Insertion Loss: Pin 6 to Pin 1



Amplitude Balance



Phase Balance



Input Return Loss: Pin 6

