

D-Sub DFR Series Flat Ribbon Connectors

D-SUB DFR SERIES CONNECTORS STANDARD STAMPED AND FORMED CONTACTS

Amphenol offers a full range of D-Sub connectors from stamped and formed pin to screw machined pin with various termination and mounting options.

DFR series feature a special contact design which allows usage of standard 1.27mm flat cable. It works with all standard D-Sub hoods and is suitable for AWG size 28.

DFR series is a reliable and compact solution for modern peripheral equipment, which can be used in telecom, commercial, industrial and any industry standard applications.

- DFR stands for Flat Ribbon Cable, Meet MIL C24308
- With front metal shell or all plastic available for clear hole mounting option only
- With cable strain relief
- Protective hoods available
- Termination tooling available



FEATURES

- Standard Density: 9, 15, 25, 37pin
- Stamp formed copper alloy contacts with 30mil gold plated
- Inserts made of flame-retardant thermoplastic
- Front metal shell and all plastic with clear hole available
- Cable strain relief and protective hoods available
- 24 hours Salty Spray Test and RoHS compliant

BENEFITS

- Current rating of 3A max.
- Support mating cycles up to 500cycles
- UL certified
- Widely used in industrial standard I/O ,Security Robotics and telecom field
- Provide a reliable and compact solution for modern peripheral equipment
- Meet environmental, health, and safety requirement

TECHNICAL INFORMATION

MATERIAL

- Shells: Steel tinned, Nickel plated 1.25µm(50µ") min., Insulator: Glass-filled thermoplastic, UL94V-0
- Rear Insert: Copper Alloy, 2.54µm (100µ") min. Nickel plated
- Pin Contacts: Copper Alloy, selected Gold in mating area; 2.54µm (100µ") min. Tin on termination area over 1.27µm (50µ") min. Nickel
- Socket Contact: Copper Alloy, selected Gold in mating area; 2.54µm (100µ") min. tin on termination area over 1.27µm (50µ") min. Nickel
- Gold over 1.25µm (50µ") min. Nickel
- Screwlock: Copper Alloy, 100µ" min. sn over 50µ" min. Nickel

MECHANICAL PERFORMANCE

- Single contact insertion force 0.34kg (0.748lb) max.
- Single contact withdrawal force 0.02kg (0.044lb) min.
- Mating and unmating force
- Unit: kg (lb)

No. Of Cts	Mate (max.)	Unmate (min.)
9 (size E)	3.06 (6.75)	0.36 (0.79)
15 (size A)	5.10 (11.24)	0.46 (1.01)
25 (size B)	8.47 (18.67)	0.8 (1.76)
37 (size C)	12.55 (27.67)	1.12 (2.47)

- Mating cycles: 500 cycles
- Operating Temperature Range: -25°C to +85°C
- Salt Spray: 24 hours

ELECTRICAL PERFORMANCE

- Current Rating: 3.0A
- Voltage Rating: 250V rms at 60Hz
- Insulation Resistance: >1000MΩ
- Contact Resistance: 20mΩ max.

ENVIRONMENTAL

- Temperature Life: Per EIA-364-17
- Thermal Shock: Per EIA-364-32
- Humidity: Per EIA-364-31
- Vibration: Per EIA-364-28
- Solderability: Per EIA-364-52

PACKAGING

- Tray

APPROVALS AND CERTIFICATIONS

- RoHS complied

TARGET MARKETS/APPLICATIONS

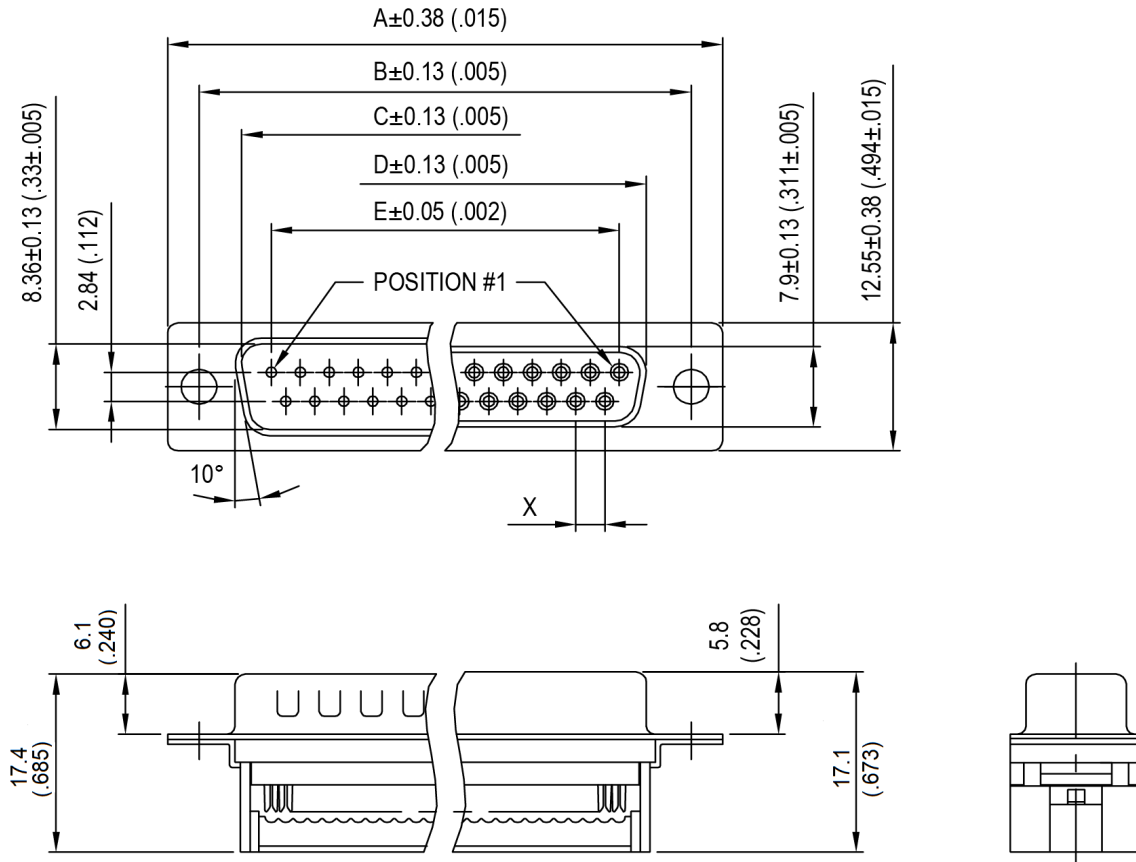


Telecom



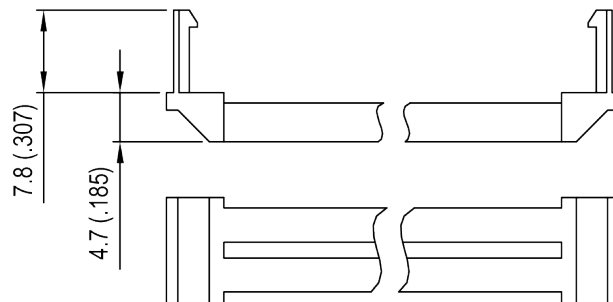
Industrial & Instrumentation

OVERALL DIMENSION



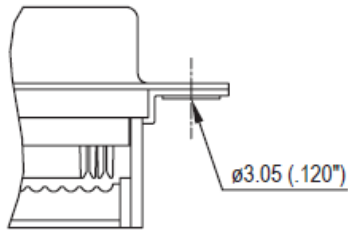
No. of Contacts	Dimensions mm (inch)						
	A	B	C	D	E	X	G
9	30.81 (1.21)	24.99 (.984)	16.92 (.666)	16.33 (.643)	11.08 (.465)	2.77	3.3 (.130)
15	39.20 (1.54)	33.30 (1.31)	25.25 (.994)	24.70 (.970)	19.39 (.763)	2.77	
25	53.04 (2.09)	47.04 (1.85)	38.96 (1.53)	38.40 (1.51)	33.24 (1.31)	2.77	
37	69.40 (2.73)	63.50 (2.50)	55.42 (2.18)	54.80 (2.16)	49.86 (1.96)	2.77	

STRAIN RELIEF

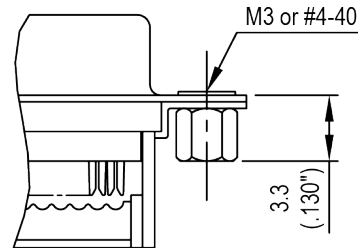


TECHNICAL DATA

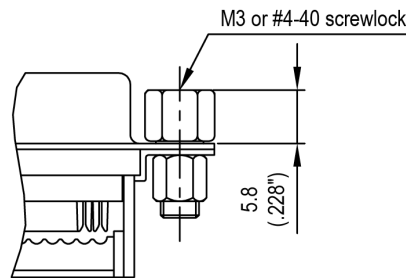
Panel mounting option



Clear hole $\varnothing 3.05\text{mm}$
no digit

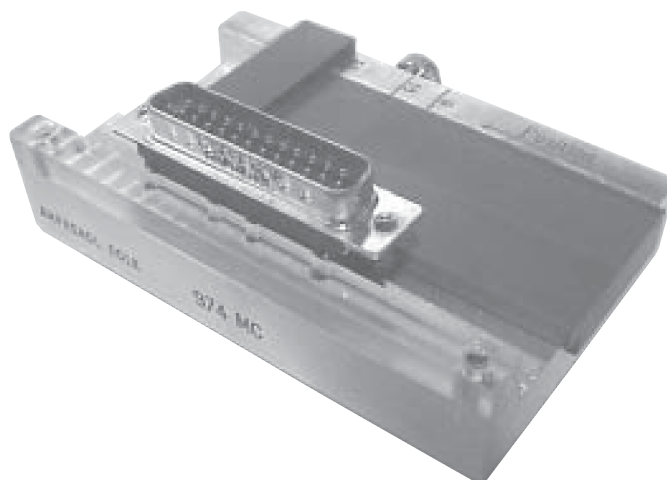


Riveted rear nut
B/D



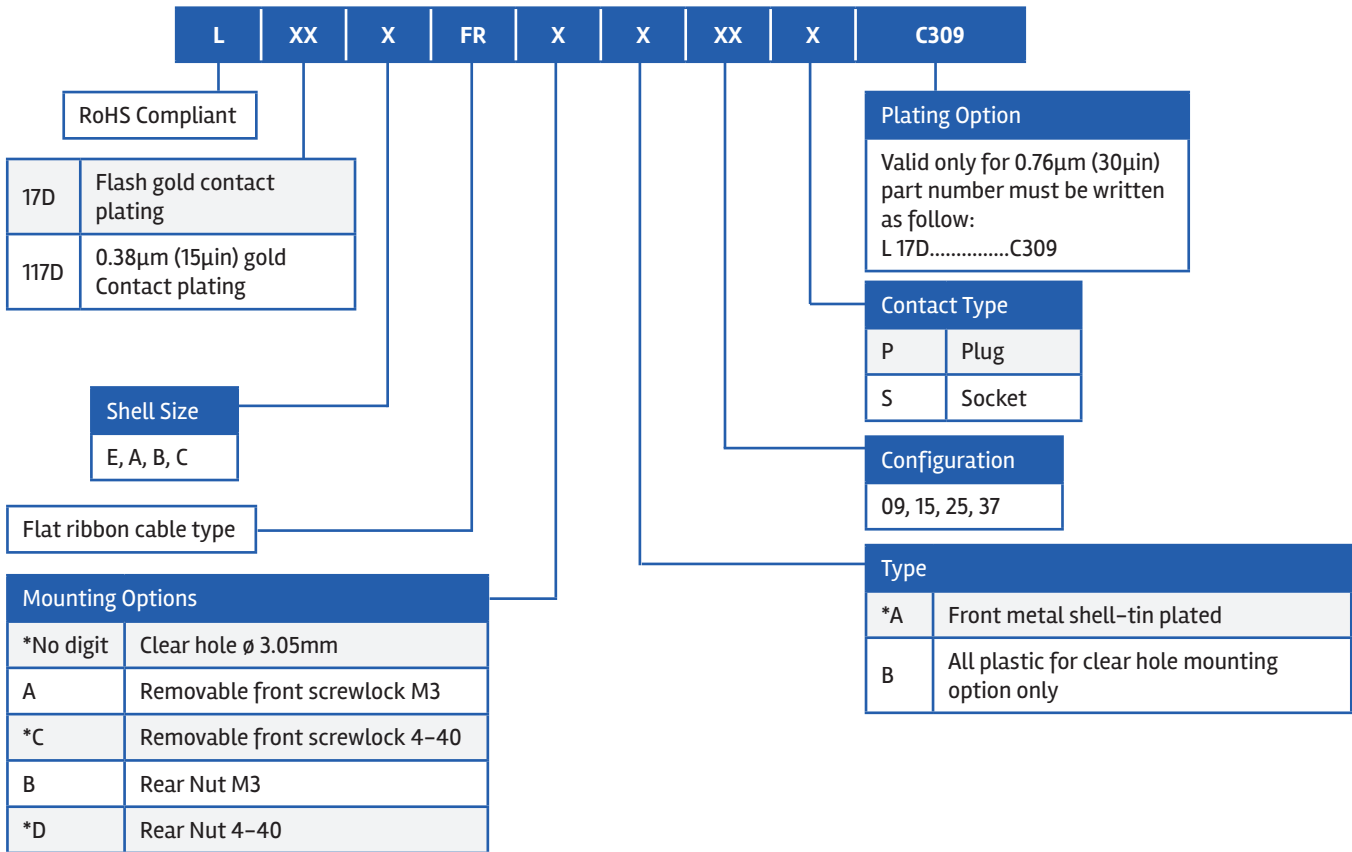
Riveted rear nut with removable front female screwlock
A/C

Tool



Support for hand termination tool:
974MC

PART NUMBER SELECTOR



*Standard options.