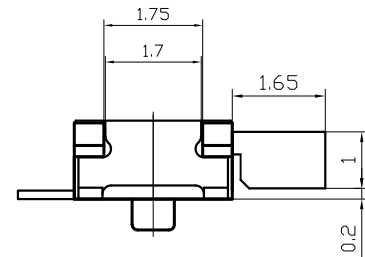
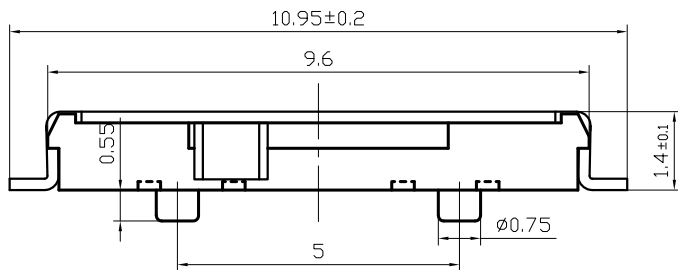


| | | | |
|-------|---------------|------|-----------|
| 1 | 2 | 3 | 4 |
| RevNo | Revision note | Date | Signature |
| | | | Checked |

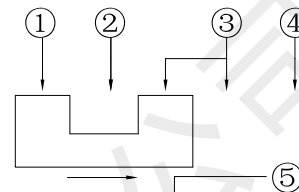
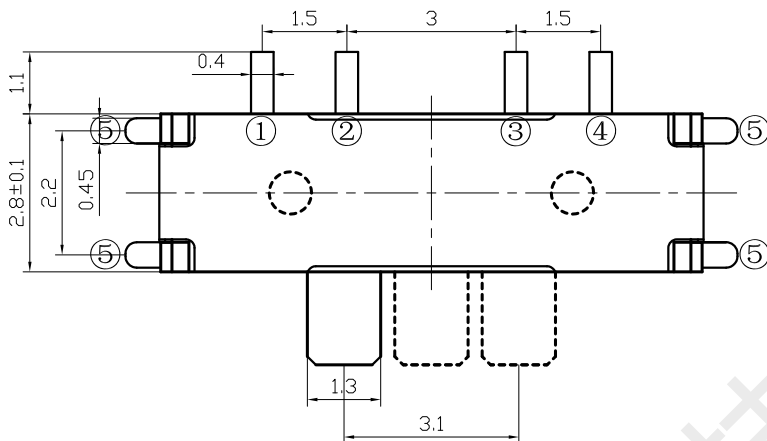
A

A



B

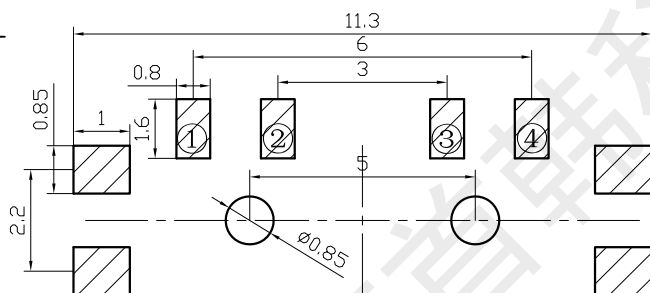
B



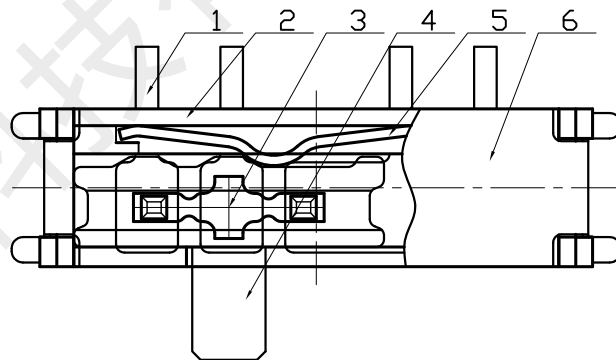
电路图

C

C



安装参考图



D

D

技术要求:

1. 零部件表面光洁无划伤, 水花, 变形, 影响外观及性能等缺陷。
2. 额定电流: 50mA. 12V DC, 绝缘电阻100MΩ min, 100V DC, 介电强度250V AC for 1min, 接触电阻100mΩ max。
3. 开关手感明显, 档位清晰可靠, 无卡滞现象, 消除外力后, 应能快速回位。

| 6 | 盖板 | WC4 | 磷铜 | 1 | 镀银 |
|----|----|-----|-----------|----|----|
| 5 | 簧片 | WE3 | 0.07镀青铜 | 1 | 镀银 |
| 4 | 弹片 | WE2 | 半硬不锈钢 | 1 | |
| 3 | 按钮 | WD1 | PA46塑料(黑) | 1 | |
| 2 | 底座 | WB1 | LCP黑 | 1 | |
| 1 | 卡件 | WA2 | 磷铜 | 1 | 镀银 |
| 序号 | 名称 | 图号 | 材料 | 数量 | 备注 |

E

E

F

F

| | | | | | | | | | | |
|----|----|-------|----|----|----|-----|-------|------|----|------------|
| | | | | | 设计 | 李春风 | 角度公差 | 比例 | 洛稱 | 八脚拨动开关(三档) |
| | | | | | | | ±1° | 10:1 | | |
| | | | | | 审核 | 钟华华 | 標尺公差 | 單位 | 型號 | MSK13C02 |
| | | | | | | | ±0.01 | mm | | |
| | | | | | 批准 | 罗孝金 | 日期 | 版本 | 图號 | 成品外形图 |
| 標記 | 處數 | 更改文件號 | 簽字 | 日期 | | | | | | |



深圳市首韩科技有限公司



深圳市首韩科技有限公司

SHENZHEN SHOUHAN TECHNOLOGY CO., LTD

Tel: 0755-27597601 Fax: 0755-27597491

承 认 书

SPECIFICATION FOR APPROVAL

商品编码 Part Code:

产品名称 Project:

拨动开关

规格型号 Part No:

MSK13C02


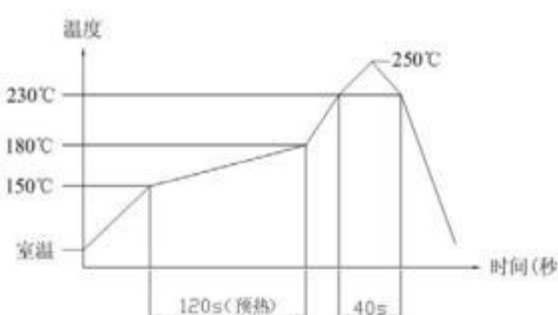
贵公司承认印 Approval signatures

| 料号/Part No. | 签章/Signatures |
|-------------|---------------|
| | |

日期 Date:

| | | |
|-------------|-----|--|
| 拟制/Drawn | 李春风 | |
| 审核/Check | 钟华华 | |
| 批准/Approved | 罗孝金 | |

| | | | |
|--|---|--|---|
|  深圳市首韩科技有限公司 | | 文件编号 | |
| | | 发布日期 | 2020年9月10日 |
| SPECIFICATION 规格书 | | 第2版 | 1of2 |
| 产品名称: 拨动开关 | | 产品型号: MSK13C02 | |
| 1: GENERAL SPECIFICATION 基本事项 | | | |
| 1.1 | RATING (额定值): DC 12V 50mA | | |
| 1.2 | PRACTICAL TEMPERATURE RANGE: -25°C~+70°C. 使用温度范围: 在-25°C~+70°C温度内使用. | | |
| 1.3 | STANDARD ATMOSPHERIC CONDITIONS : UNLESS OTHERWISE SPECIFIED. THE STANDARD RANGE OF ATMOSPHERIC CONDITIONS FOR MAKING MEASUREMENTS AND TESTS ARE AS FOLLOWS: (1) AMBIENT TEMPERATURE : 5°C TO 35°C; (2) RELATIVE HUMIDITY : 45% TO 85%; (3) AIR PRESSURE : 86Kpa TO 106Kpa. 测试标准状态: 在没有指定的情况下测试温度, 湿度, 气压如下: (1) 温度为5~35°C; (2) 湿度为45~85%; (3) 气压为86Kpa~106Kpa. | | |
| 2. ELECTRICAL CHARACTERISTICS (电气性能规格): | | | |
| ITEM | 项目 | TEST CONDITIONS 测试条件 | PERFORMANCE (DATA) 规格(数据) |
| 2.1 | CONTACT RESISTANCE 接触电阻 | MEASURED AT 1KHz SMALL CURRENT (100 mA OR LESS) 在1KHz微小电流(100mA 以下)测试. | 100mΩ MAX. 100毫欧以下. |
| 2.2 | INSULATION RESISTANCE 绝缘电阻 | APPLY A VOLTAGE OF 100V DC FOR 1 MIN. THE FOLLOWING CONTACT TEST METHOD: (1) BETWEEN BODY AND CONDUCTOR. (2) BETWEEN CONDUCTORS NOT TO BE CONTACT. 输入100V DC电压1分钟, 按以下接触方法测试: (1) 接触端子之间. (2) 胶座体和排脚之间. | 100MΩ MIN. 100兆欧以上. |
| 2.3 | ELECTRIC STRENGTH 耐电压 | AC 250V (50-60Hz) FOR 1 MIN TRIP CURRENT: 0.5mA THE FOLLOWING CONTACT TEST METHOD: (1) BETWEEN TERMINALS. (2) BETWEEN INDIVIDUAL TERMINALS AND FRAME. 输入AC250V (50-60Hz) 电压, 1分钟感度电流为0.5mA, 接触测试方法如下: (1) 接触端子之间. (2) 外壳体和排脚之间. | WITHOUT DAMAGE TO PARTS ARCING OR BREAKDOWN ETC. 没有绝缘破坏等异常 |
| 3. MECHANICAL CHARACTERISTICS (机械性能规格) | | | |
| ITEM | 项目 | TEST CONDITIONS 测试条件 | PERFORMANCE (DATA) 规格(数据) |
| 3.1 | OPERATION FORCE 动作力 | LATERAL PUSH (侧向推动) | PUSH FORCE (按压力度): 210gf ± 70gf |
| 3.2 | TRAVEL TO CLOSURE 动作行程 | IN THE HORIZONTAL DIRECTION SWITCH HANDLE OPERATION, WITH AN EQUAL TO 2TIMES THE THRUST OF THE SWITCH FROM ONE POSITION TO THE NEXT GEAR, MOVING DISTANCE MEASURING HANDLE. 在开关推柄运行的水平方向, 以一个等于2倍推力使开关从一个档位运动到下一档位, 测量推柄的移动距离. | 1.6mm ± 0.2mm |
| 3.3 | STEM STRENGTH 操作部(柄)强度 | AND ALONG THE RUNNING DIRECTION AT APEX HANDLE (500gf) ON THE STRENGTH TEST, TIME IS 30 SECONDS. 在推柄的先端沿运行方向加上(500gf)力度测试, 时间为30秒. | 外观无异常, 满足于机械, 电气性能 |

| | | | |
|--|------------------------------|---|---|
|  深圳市首韩科技有限公司 | | 文件编号 发布日期 | 2020年9月10日 |
| SPECIFICATION 规格书 | | 第2版 | 2of2 |
| 产品名称：拨动开关 | | 产品型号：MSK13C02 | |
| 4. DURABILITY(耐久性)： | | | |
| ITEM 项目 | TEST CONDITIONS 测试条件 | | PERFORMANCE (DATA) 规格(数据) |
| 4.1 | LIFE TEST 寿命试验 | AN ACTUATOR SHALL BE WITH A THRUST OF NO GREAT THAN 1 TIMES SWITH POWER TO 10000 CYCLES AT A SPEED OF 30 CYCLES FOR 1 MIN. 操作者以每分钟30次的频率，施加不大于开关1倍的推力做10000次无负荷测试. | 1) CONTACT RESISTANCE SHALL BE 500mΩ MAX. 2) LIFETIME: 10000 CYCLES 1) 接触电阻不超于500mΩ. 2) 寿命: 10000次 |
| 4.2 | HEAT TEST 耐热实验 | THE SWITCH SHALL BE STORED AT A TEMPERATURE OF 85±2℃ FOR 96 HOURS. AND THEN IT SHALL BE SUBJECTED TO THE CONTROLLED RECOVERY CONDITIONS FOR 1 HOUR AFTER WHICH MEASUREMENT SHALL BE MADE. 放置在温度85±2℃中96小时后，再放置正常室温中1小时后测定. | THERE SHALL BE NO DAMAGE ON APPEARANCE. MECHANICAL AND ELECTRICAL CHARACTERISTICS SHALL BE SATISFIED. 外观无异常，满足于机械，电气性能 |
| 4.3 | COLD TEST 耐冷实验 | THE SWITCH SHALL BE STORED AT A TEMPERATURE OF -25±3℃ FOR 96 HOURS. AND THEN IT SHALL BE SUBJECTED TO THE CONTROLLED RECOVERY CONDITIONS FOR 1 HOUR AFTER WHICH MEASUREMENT SHALL BE MADE. 放置在温度-25±3℃中96小时后，再放置正常室温中1小时后测定. | |
| 4.4 | HUMIDITY TEST 潮湿实验 | THE SWITCH SHALL BE STORED AT A TEMPERATURE OF 40±2℃ AND A HUMIDITY OF 80% TO 85% FOR 96 Hr. THEN THE JACK SHALL BE MAINTAINED AT STANDARD ATMOSPHERIC CONDITION FOR 1 Hr FOR OTHER PROCEDURES. 放置在40±2℃相对湿度为80~85%环境中96小时后，再将样品放在正常室温中1小时后测定. | |
| 4.5 | SOLDERING CONDITIONS 焊锡条件 | HAND SOLDERING 手焊： 1) DIVCE 工具：SOLDER IRON 电烙铁。 A. 350℃MAX. , 2 sec Max B. 270℃MAX. , 4 sec Max 2) REFLOW SOLDERING 回流焊：≤250℃  | |