

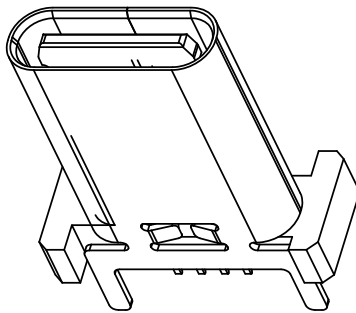
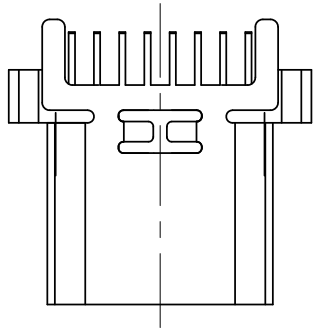
RoHS

MAPX

MODIFICATION

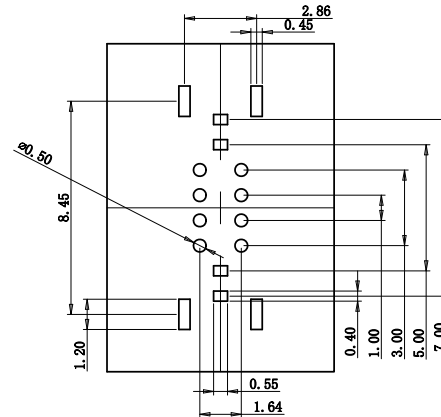
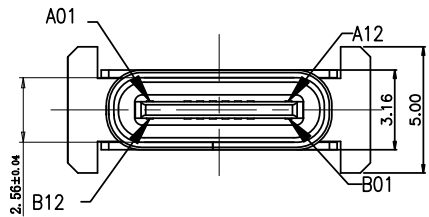
DRW

DATE

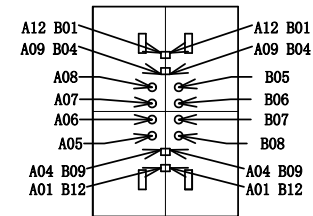
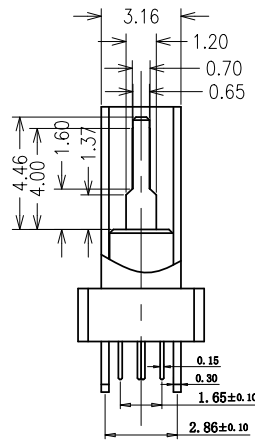
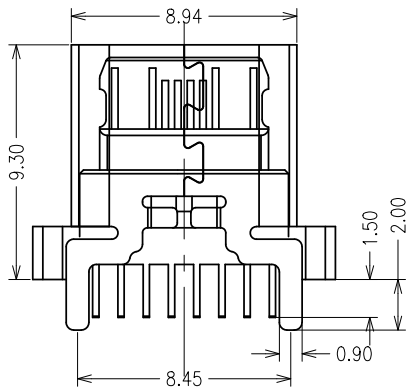


SPECIFICATIONS:

- 1. ELECTRICAL CHARACTERISTICS:
- 2. MECHANICAL CHARACTERISTICS:
- 1-1. CONTACT RESISTANCE: 10m MAX. Ω
- 1-2. DIELECTRIC WITHSTANDING VOLTAGE: 100V AC FOR ONE MINUTE.
- 1-3. INSULATION RESISTANCE: 100M MIN. MEASURED BY 500 VDC
- 2-1. INSERTION FORCE :0.5-2.0kgf(REF.)
- 2-2. WITHDRAWAL FORCE :0.8-2.0kgf(REF.)
- 3. LIFE TEST: 10,000 CYCLES.



RECOMMENDED P.C.B. LAYOUT (T:1.00mm)
TOLERANCE UNSPECIFIED ±0.05mm



A1	GD	B12	GD
A4	VBS	B9	VBS
A5	CC	B8	SBS
A6	FP1	B7	BS
A7	MS	B6	FP2
A8	SDH	B5	CC
A9	VBS	B4	VBS
A12	GD	B1	GD
FIN	SIGNAL NAME	FIN	SIGNAL NAME

<p>产品图 PRODUCT CHART DWG</p> <p>公差一览表 TOLERANCE UNLESS OTHERWISE</p>		<p>深圳市精拓金电子有限公司 Shenzhen Jing Tuo Jin Electronics Co., Ltd.</p>							
X.	±0.35	X.	±5.°	单位 UNITS	MM	制图 DRAWING	L-S-S	制图料号 PRODUCT PART NO.	918-648K2027E30018
.X	±0.25	.X	±2.°	比例 SCALE	1:1	审核 CHKD	郭治富	产品名称 PRODUCT NO.	TYPE-C3.1母座9.3直立式无弹 无柱四脚DIP/LCP黑胶16PINJ
.XX	±0.20	.XX	±1.°	日期 DATE	2021-03-10	核准 APPD	黄国荣	角法 VIEW	⊕ □
.XXX	±0.05	.XXX	±0.5°					版本 VER	A0