

广东星坤科技股份有限公司

| | |
|-------------|-------|
| DATE | 日期 |
| DESCRIPTION | 文件工程章 |

| MARK | DESCRIPTION | DATE | REVISED | APPROVED | UNSPECIFIED TOLERANCES |
|------|-------------|------|---------|----------|------------------------|
| | REVISIONS | | | | |
| | | | | | ANGLAR ±5° |
| | | | | | L ≤ 4 ±0.2 |
| | | | | | 4 < L ≤ 16 ±0.3 |
| | | | | | 16 < L ≤ 63 ±0.4 |
| | | | | | L > 63 ±0.5 |



| | | |
|------|-------------|-------------------------------|
| DSND | SCALE: N/A | MODEL TYPE: |
| DWN | VIEW: | PART NO.: X1304WVS-52A-LPV10 |
| CHKD | UNIT: mm/in | DWG NO.: X-X1304WVS-52A-LPV10 |
| APPD | SIZE: A4 | WEIGHT |
| | | SHEET 1/1 |
| | | REVISION A0 |

XKB INDUSTRIAL PRECISION CO., LIMITED

NOTES 注释:

1. MATERIAL 材料:

HOUSING 外壳: THERMOPLASTIC, HIGH TEMP.,
UL94V-0;BLACK COLOR

CONTACTS 触点: COPPER ALLOY.

PEGS 螺钉: COPPER ALLOY.

2. FINISH 饰面:

CONTACT 触点: SELECTEIVE GOLD PLATING ON CONTACT AREA.
100μ"MIN. MATTE TIN PLATING ON SOLDER TAILS,
50μ" MIN. NICKEL UNDERPLATING OVERALL.

PEGS 螺钉: 120u" MIN. MATTE-TIN OVER 50u" MIN. NICKEL.

X1304 W V S - 52 A - LP V10

- ① ② ③④ ⑤ ⑥ ⑦ ⑧

① Series Number

② Terminal form: W-Wafer

③ Welding Board Angle : V-Stright Angle 180°

④ Welding Way: S-SMT

⑤ No. of Pins: 52 PIN

⑥ HEIGHT: A 4.0mm; B 5.2mm; C 5.6mm; D 6.8mm;
E 7.0mm; F 8.0mm; G 9.0mm; H 9.9mm

⑦ Plastic material: LP-PCP UL94V-0

⑧ Contact Plating: V01-Gold Flash 1"u";
V10-Gold Flash 10"u";
V30-Gold Flash 30"u"

广东星坤科技股份有限公司

| | |
|----|----|
| Δ# | 日期 |
| Δ# | 日期 |
| Δ# | 日期 |

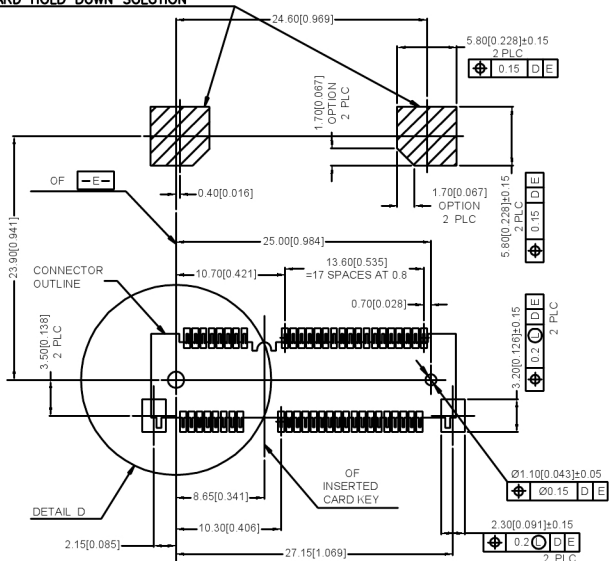
文件工程章

| MARK | DESCRIPTION | DATE | REVISED | APPROVED | ANGLAR | ±5° |
|-----------|-------------|------|---------|----------|------------------------|------|
| | | | | | L ≤ 4 | ±0.2 |
| | | | | | 4 < L ≤ 16 | ±0.3 |
| | | | | | 16 < L ≤ 63 | ±0.4 |
| | | | | | L > 63 | ±0.5 |
| REVISIONS | | | | | UNSPECIFIED TOLERANCES | |

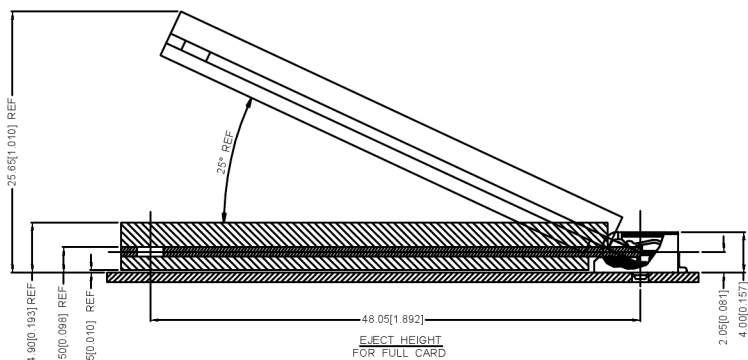


| | | |
|---------------------------------------|-------------|-------------------------------|
| DSND | SCALE: N/A | MODEL TYPE: |
| DWN | VIEW: | PART NO.: X1304WWS-52A-LPV10 |
| CHKD | UNIT: mm/in | DWG NO.: X-X1304WWS-52A-LPV10 |
| APPD | SIZE: A4 | |
| XKB INDUSTRIAL PRECISION CO., LIMITED | | WEIGHT |
| | | SHEET |
| | | REVISION |
| | | 1/1 |
| | | A0 |

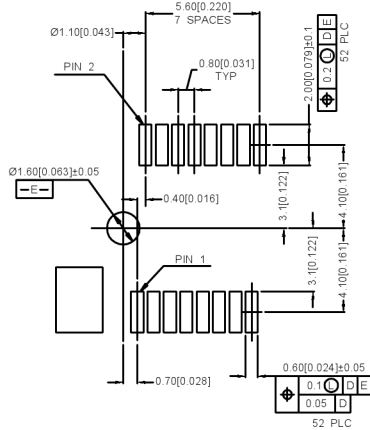
COMPONENT KEEP OUT AREA FOR
CARD HOLD DOWN SOLUTION



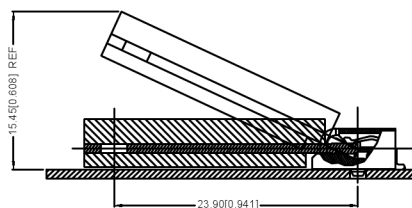
—D— IS THE TOP SURFACE OF PCB.
RECOMMENDED P.C. BOARD PATTERN LAYOUT
FOR HALF CARD CONNECTOR
(TOP VIEW)



EJECT HEIGHT
FOR FULL CARD

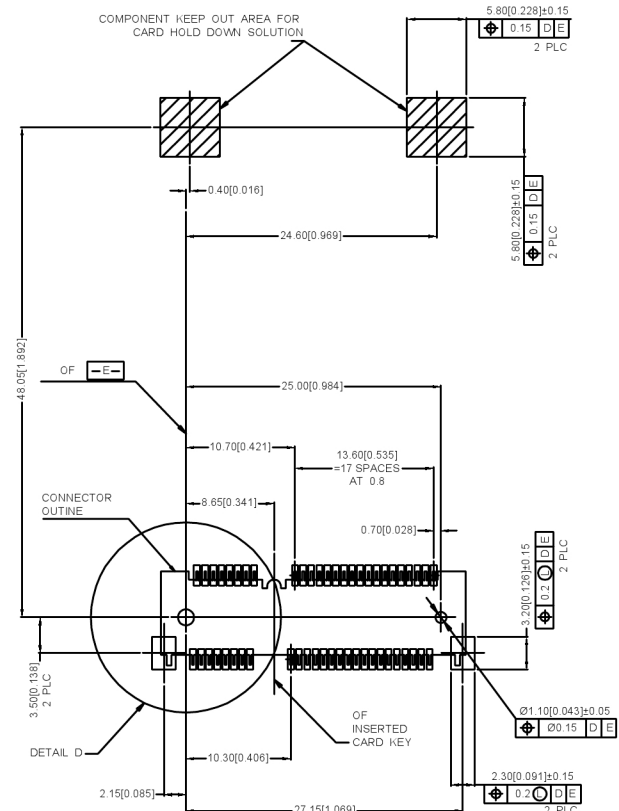


DETAIL D
SCALE 2:1



EJECT HEIGHT
FOR HALF CARD

COMPONENT KEEP OUT AREA FOR
CARD HOLD DOWN SOLUTION



—D— IS THE TOP SURFACE OF PCB.
RECOMMENDED P.C. BOARD PATTERN LAYOUT
FOR HALF CARD CONNECTOR
(TOP VIEW)

广东星坤科技股份有限公司

| | |
|----|----|
| Δ建 | 日期 |
| Δ改 | 日期 |
| ΔX | |

文件工程单

| MARK | DESCRIPTION | DATE | REVISED | APPROVED | UNSPECIFIED TOLERANCES |
|------|-------------|------|---------|----------|------------------------|
| | REVISIONS | | | | |
| | | | | | |
| | | | | | |
| | | | | | |
| | | | | | |

| | |
|-------------|------|
| ANGLAR | ±5° |
| L ≤ 4 | ±0.2 |
| 4 < L ≤ 16 | ±0.3 |
| 16 < L ≤ 63 | ±0.4 |
| L > 63 | ±0.5 |



| | | |
|------|-------------|----------------------|
| DSND | SCALE: N/A | MODEL TYPE: |
| DWN | VIEW: | PART NO.: |
| CHKD | UNIT: mm/in | X1304WWS-52A-LPV10 |
| APPD | SIZE: A4 | DWG NO.: |
| | | X-X1304WWS-52A-LPV10 |
| | WEIGHT | SHEET |
| | | 1/1 |
| | | REVISION |
| | | A0 |

XKB INDUSTRIAL PRECISION CO., LIMITED

