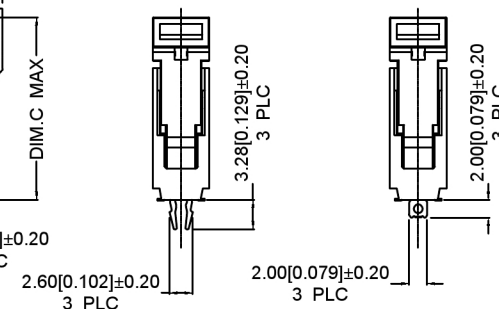
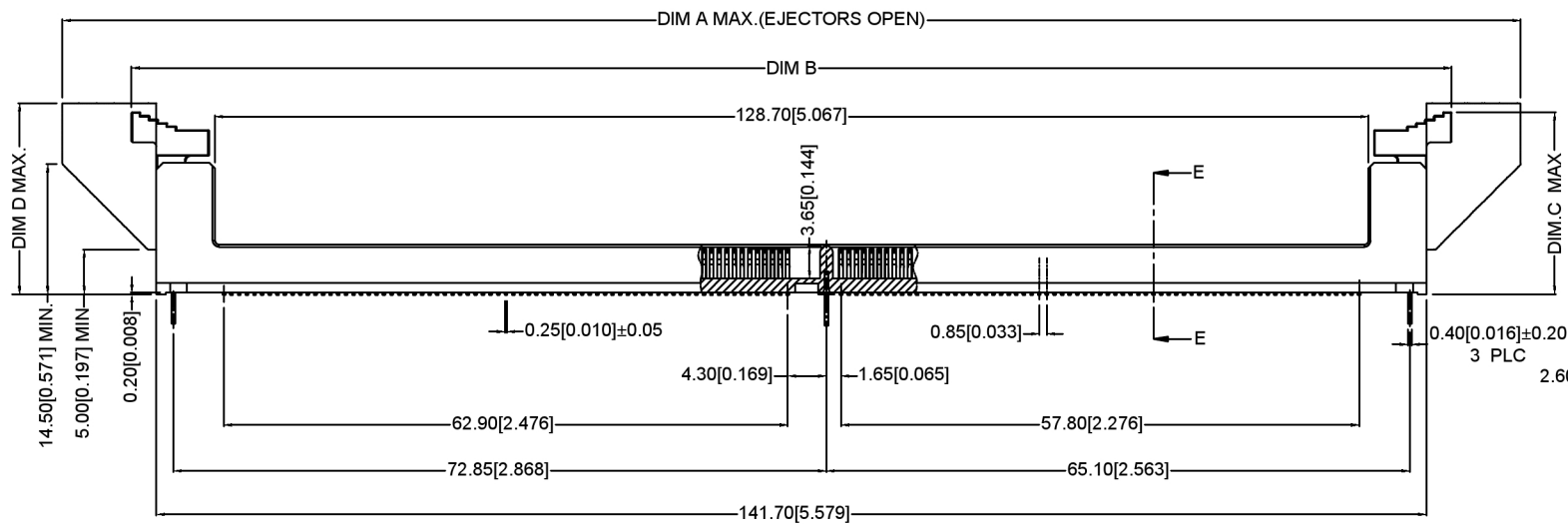


SECTION E-E
SCALE 2:1



BOARDLOCKS TYPE

TAB TYPE

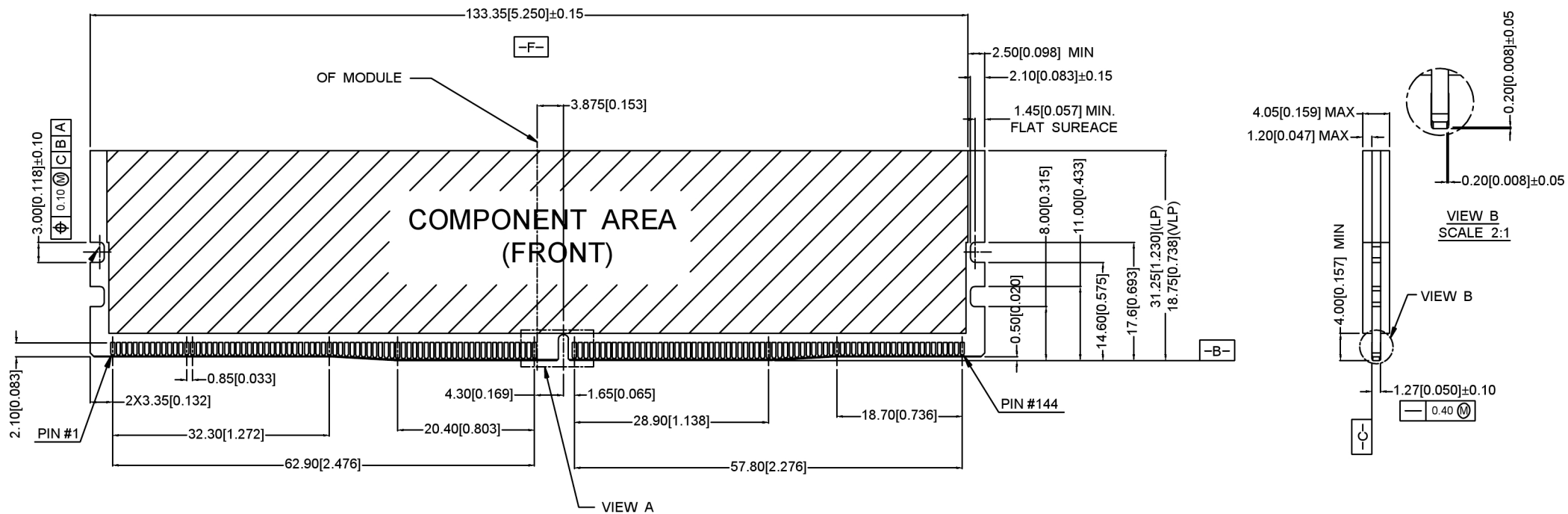
广东星坤科技股份有限公司
文件工程章

MARK	DESCRIPTION	DATE	REVISED	APPROVED	UNSPECIFIED TOLERANCES
Δ					ANGLAR ±5°
Δ					L ≤ 4 ±0.2
Δ					4 < L ≤ 16 ±0.3
Δ					16 < L ≤ 63 ±0.4
Δ					L > 63 ±0.5
	REVISIONS				

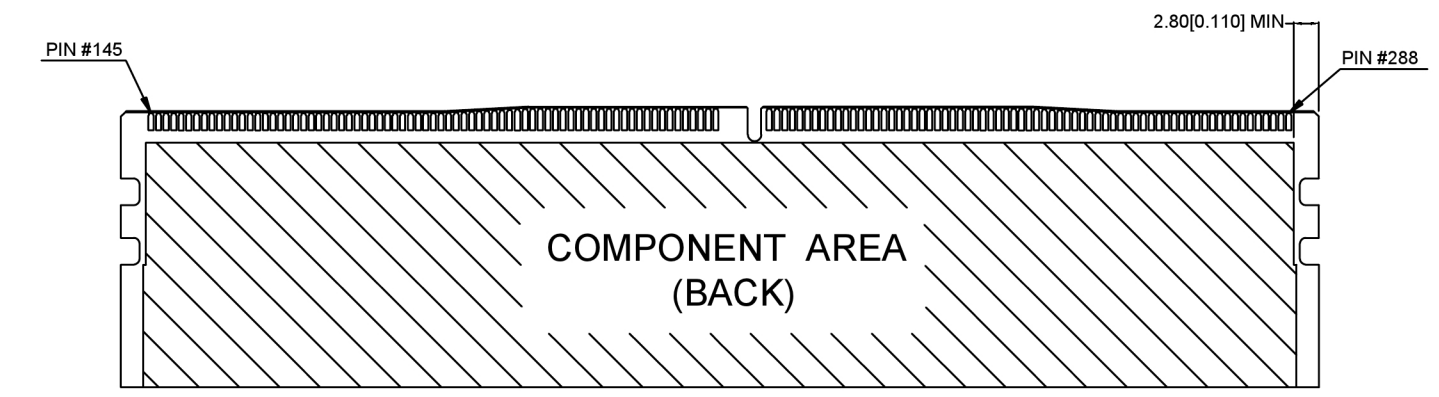


DSND	SCALE: N/A	MODEL TYPE:
DWN	VIEW:	PART NO.: X9413WVS-288XX-9TV15
CHKD	UNIT: mm/in	DWG NO.: X-X9413WVS-288XX-9TV15
APPD	SIZE: A4	WEIGHT SHEET REVISION
		1/1 A0

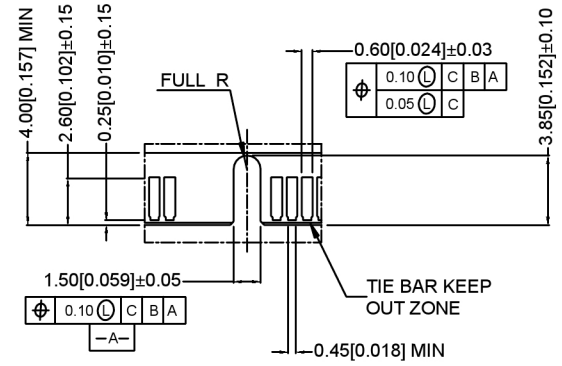
XKB INDUSTRIAL PRECISION CO., LIMITED



VIEW B
SCALE 2:1



VIEW A
SCALE 2:1



VIEW A
SCALE 2:1

广东星坤科技股份有限公司

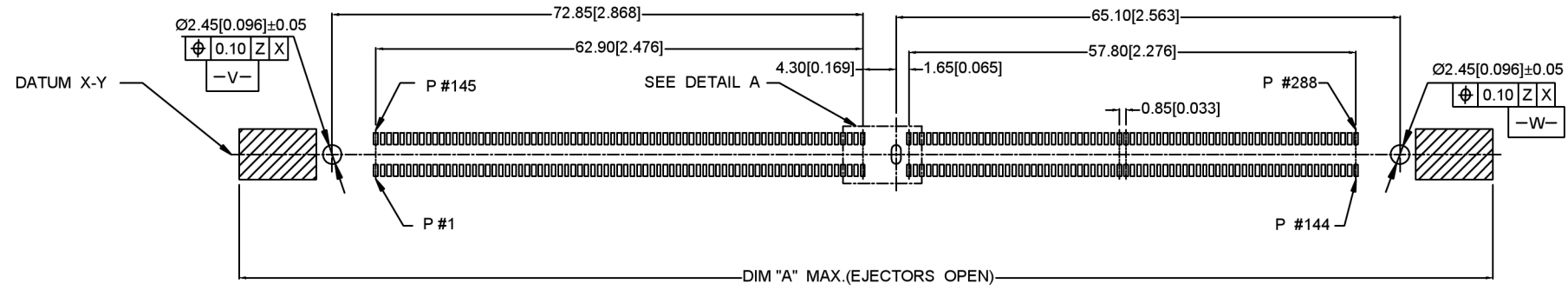
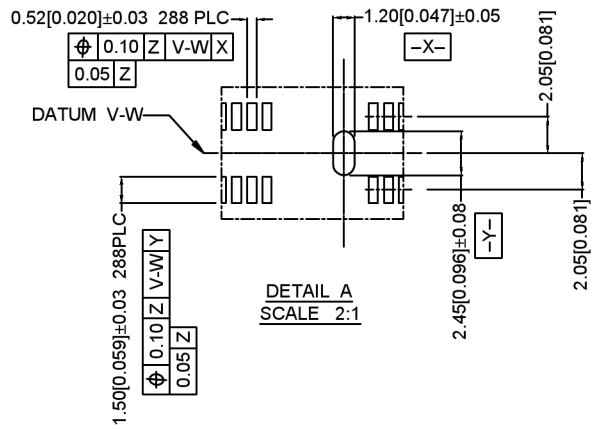
DATE	日期
REVISIONS	文件工程章

MARK	DESCRIPTION	DATE	REVISED	APPROVED
------	-------------	------	---------	----------

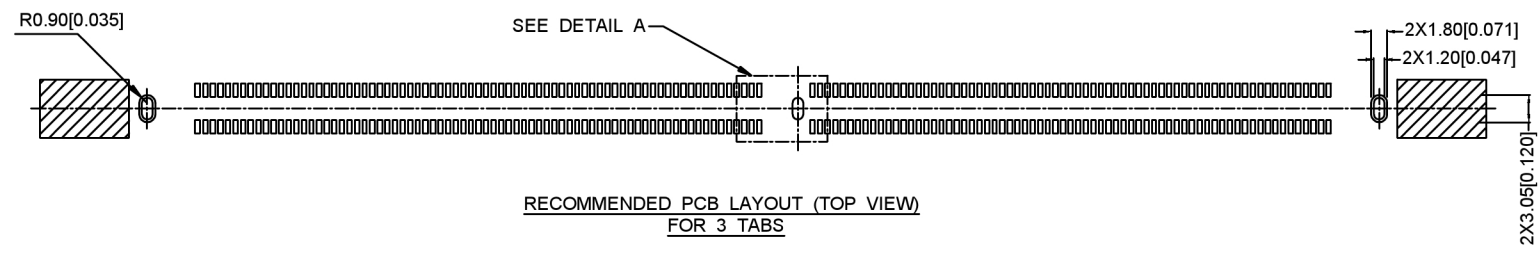
ANGLAR	±5°
L ≤ 4	±0.2
4 < L ≤ 16	±0.3
16 < L ≤ 63	±0.4
L > 63	±0.5
UNSPECIFIED TOLERANCES	



DSND	SCALE: N/A	MODEL TYPE:
DWN	VIEW:	PART NO.: X9413WVS-288XX-9TV15
CHKD	UNIT: mm/in	DWG NO.: X-X9413WVS-288XX-9TV15
APPD	SIZE: A4	WEIGHT SHEET REVISION
XKB INDUSTRIAL PRECISION CO., LIMITED		1/1 A0



RECOMMENDED PCB LAYOUT (TOP VIEW)
FOR 3 BOARDLOCKS



RECOMMENDED PCB LAYOUT (TOP VIEW)
FOR 3 TABS

-Z-

广东星坤科技股份有限公司

Δ*	日期
Δ*	日期
Δ*	日期
MARK	DESCRIPTION
文件	工程章

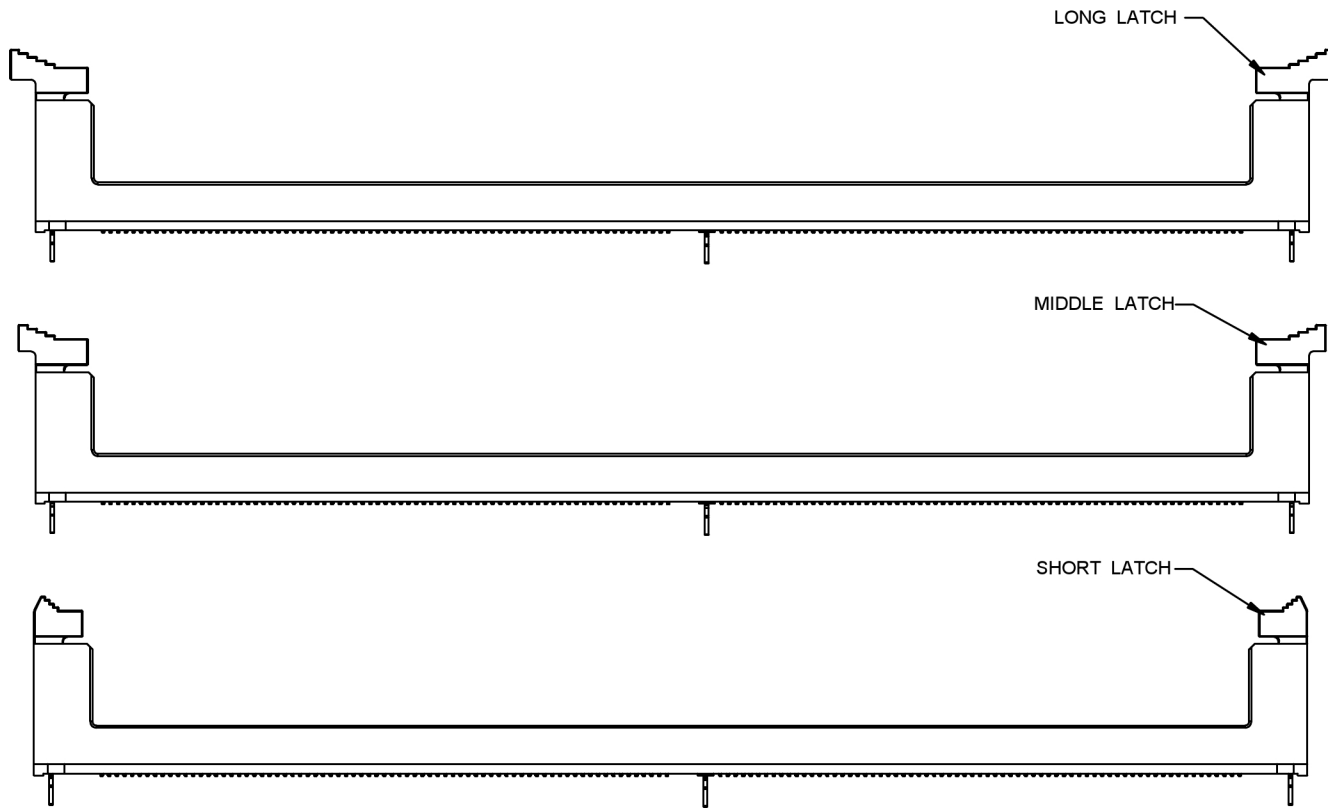
					ANGLAR	±5°
					L ≤ 4	±0.2
					4 < L ≤ 16	±0.3
					16 < L ≤ 63	±0.4
					L > 63	±0.5
REVISIONS						UNSPECIFIED TOLERANCES
www.helloxkb.com www.helloxkb.cn www.xk-dg.cn						



DSND	SCALE: N/A	MODEL TYPE:
DWN	VIEW:	PART NO.:
CHKD	UNIT: mm/in	X9413WVS-288XX-9TV15
APPD	SIZE: A4	DWG NO.:
		X-X9413WVS-288XX-9TV15

XKB INDUSTRIAL PRECISION CO., LIMITED

WEIGHT	SHEET	REVISION
	1/1	A0



21.75	20.70	147.30	162.00	LONG
21.00	20.30	142.35	156.00	MIDDLE
20.50	20.20	140.80	152.00	SHORT
DIM.D	DIM.C	DIM.B±0.30	DIM.A	LATCH TYPE

X9413 W V S - 288 X X X -9T V15
 ① ② ③ ④ ⑤ ⑥ ⑦ ⑧ ⑨ ⑩

1. Series Number
2. Terminal form: W-Wafer
3. Welding Board Angle : V-Stright Angle 180°
4. Welding Way: S-SMT
5. No. of Pins: XX-288 Pin
6. Board Lock Type: B-Board Locks Type; T-TAB type
7. Latch Type: 1. short latch; 2. long latch; 3. middle Latch
8. Special No: M-With Mylar ; Blank-without Mylar
9. latch Plastic material: PA46 /PA9T UL94V-0
10. Contact Plating: V01-Gold Flash
 V15-Gold 15u"
 V30-Gold 30u"

NOTES 注释:

1. MATERIAL 材料:

- 1.1 HOUSING 外壳: HIGH PERFORMANCE RESINS, GLASS FILBER, UL94V-0; COLOR: SEE PART NO.
- 1.2 LATCH 锁: HIGH PERFORMANCE RESINS, GLASS FILBER, UL94 V-O, COLOR: SEE PART NO.
- 1.3 CONTACTS 触点: COPPER ALLOY.
- 1.4 BOARDLOCK 针脚: STAINLESS STEEL.
- 1.5 TABS 标签: STAINLESS STEEL.

2. FINISH 饰面:

2.1 CONTACT 触点:

- [SEE PART NO..] GOLD PLATING ON THE CONTACT AREA.
 2.54um [100u"] MIN. MATTE-TIN PLATING ON THE SOLDERING AREA
 1.27um [50u"] MIN. NICKEL UNDERPLATING OVERALL.

广东星坤科技股份有限公司

DATE	日期
REVISIONS	文件工程章

www.helloxkb.com www.helloxkb.cn www.xk-dg.cn

ANGLAR	±5°
L ≤ 4	±0.2
4 < L ≤ 16	±0.3
16 < L ≤ 63	±0.4
L > 63	±0.5
UNSPECIFIED TOLERANCES	



DSND	SCALE: N/A	MODEL TYPE:
DWN	VIEW:	PART NO.: X9413WVS-288XX-9TV15
CHKD	UNIT: mm/in	DWG NO.: X-X9413WVS-288XX-9TV15
APPD	SIZE: A4	WEIGHT SHEET REVISION
XKB INDUSTRIAL PRECISION CO., LIMITED		1/1 A0