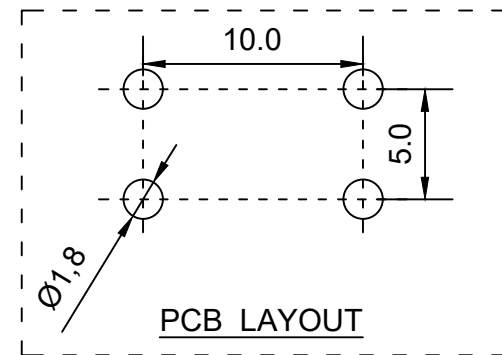
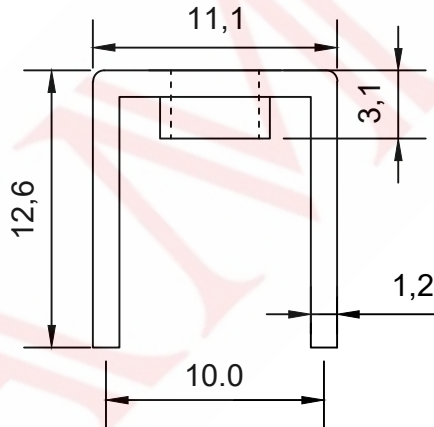
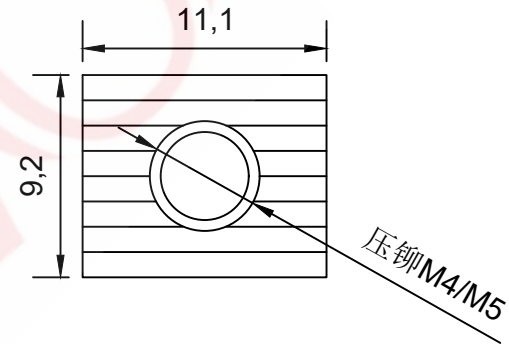
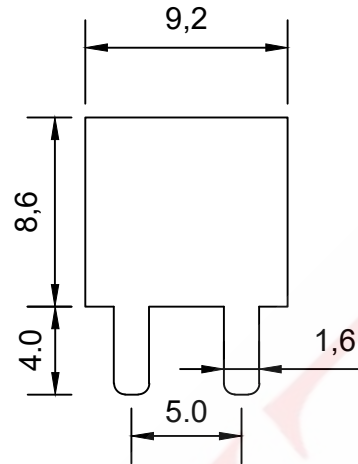


SAMZO REAC/ROHS

REV	ECN NO	DESCRIPTION	DESIGN	APPROVAL	DATE
A1	NEW	Replace frame			2018.06.12

技术要求:
Technical requirements:

- 打铜底0.5-1UM, 镍底2-2.5UM, 哑锡3-5UM。
 Copper base 0.5 - 1 UM, nickel base 2 - 2.5 UM, matte tin 3 - 5 UM.
- 不得有脚变形, 毛刺等缺陷。
 There shall be no defects such as pin deformation and burrs.
- 插脚尖部符合可焊性要求。
 The tip of the insertion pin shall meet the solderability requirements.
- 螺纹需符合通止规要求。
 The thread shall meet the requirements of the go and no-go gauge.
- 材质: 黄铜H65。
 Material: Brass H65.
- 过载电流: 75A
 Overload current: 75A
- 螺孔为拉伸M4/M5
 The screw holes are press-rieveted M4/M5
- 未标注尺寸公差值按 GB/T1184-1996H级
 Unmarked dimensional tolerance values are in accordance with Grade H of GB/T1184-1996



911 86 40 0 M*

SERISE: 9.2*11.1mm
 HIGH: 8.6mm
 FOOT HIGH: 4.0mm
 CUSTOM CODE: ROUTINE
 SCREW HOLE: M4/M5

ITEM	DESCRIPTION	MATERIAL	QTY	FINSH/COLOR	FIRST VIEW						
A	Subject	H62(Y2)	1	tin plating							
					GENERAL TOLERANCE						
					≥0~2<	±0.15	SCALE	1:1	UNIT	mm	
					DESIGN	WANGUIFA	2018.06.12	≥2~5<			±0.25
					CHECKED	ZHENGUILAN	2018.06.12	≥0~2<			±0.15
					APPROVED	LILIANJIANG	2018.06.14	≥5			±0.35

The copyright belongs to samzo parts [China] Co., Ltd. please use the material after samzo parts agree to authorize. The final right of interpretation belongs to samzo parts.
 WWW.KKK-JP.COM

TITLE: 9.2*11.1-H8.6+4mm (M4/M5)	
DWG NO: 911-P012	
PART NO: 911-2305193	
MODEL NO: 91186400-M*	
NAME:	PCB soldering terminal

SAMZO COMPONENTS
 Electronic switch and connector manufacturer