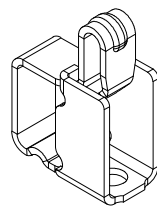
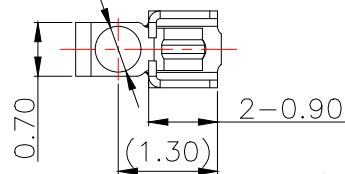


( $\phi 0.60$ ) PICK&PLACE AREA

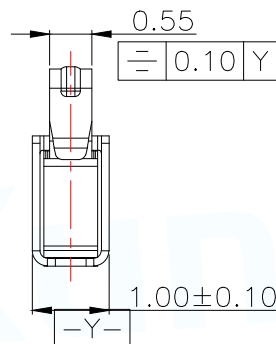
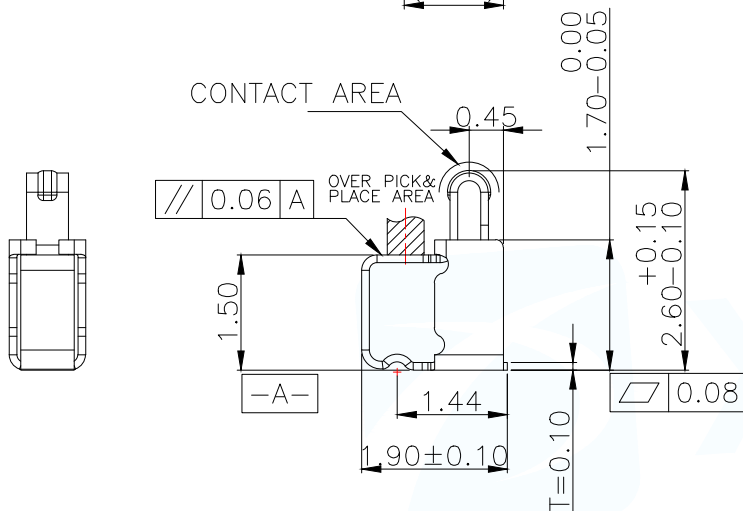


3D VIEW

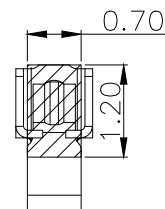
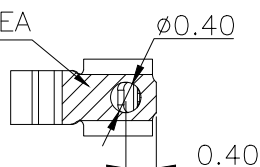
NOTES

- (1) MATERIAL: C5210 THICKNE=0.10mm
- (2) PRODUCT SPECIFICATIONS:
  - 2-1: RATED CURRENT: 1.0A
  - 2-2: VOLTAGE RATING: 1.50V
  - 2-3: CONTACT RESISTANCE: 80m $\Omega$ /MAX
  - 2-4: WELDING THRUST:  $\geq 3$ KG
  - 2-5: OPERATING TEMPERATURE:  $-40^{\circ}\text{C} \sim +85^{\circ}\text{C}$
  - 2-6: DURABILITY: 1500 CYCLES
- (3): SALT SPRAY: 72 HOURS
- (4): FINISH: 50u"Min NICKEL UNDERPLATING OVER ALL.
- (5): REQUIREMENTS
  - 5-1: TERMINAL TO EAT FULL TIN, NOT PEELING WELDING OBVIOUS COLOR AND OTHER ADVERSE
  - 5-2: ROHS, REACH, HF HALOGEN ADVERSE OF DOMESTIC AND INTERNATIONAL ENVIRONMENTAL REQUIREMENTS

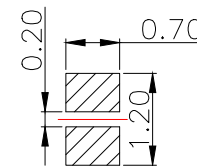
CONTACT AREA



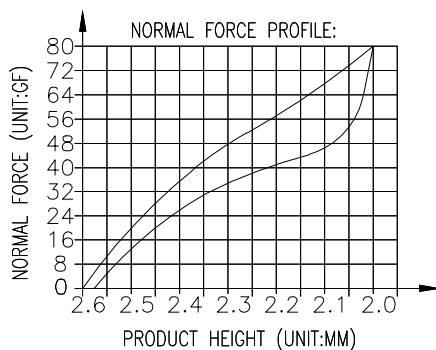
SOLDER AREA



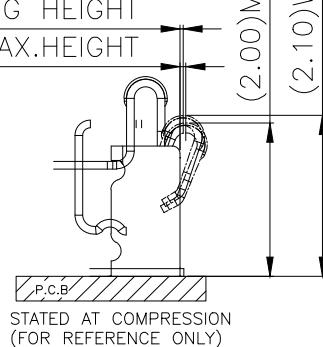
RECOMMENDED PCB LAYOUT  
TOLERANCE  $\pm 0.05$  (焊盘推荐图)



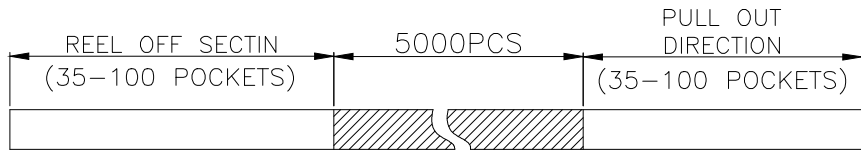
METAL MASK T=0.10  
TOLERANCE  $\pm 0.05$  (钢网推荐图)



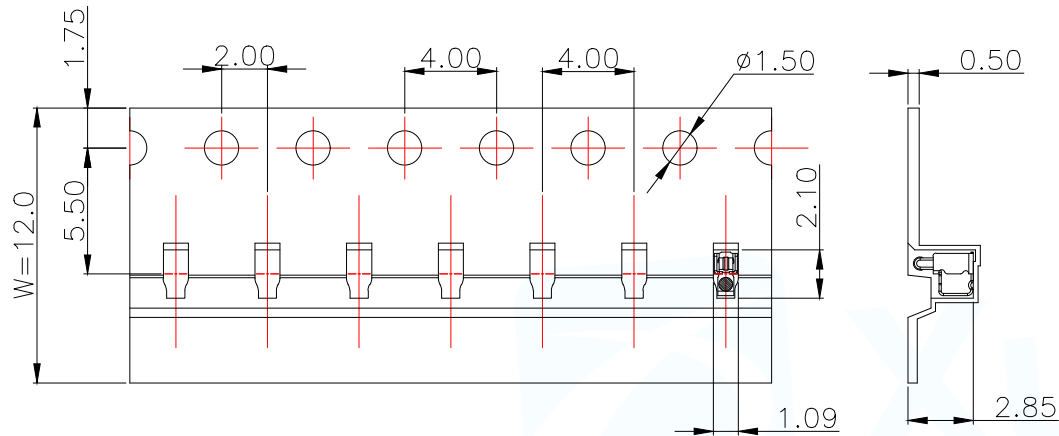
(0.04) WORKING HEIGHT  
(0.07) MAX. HEIGHT



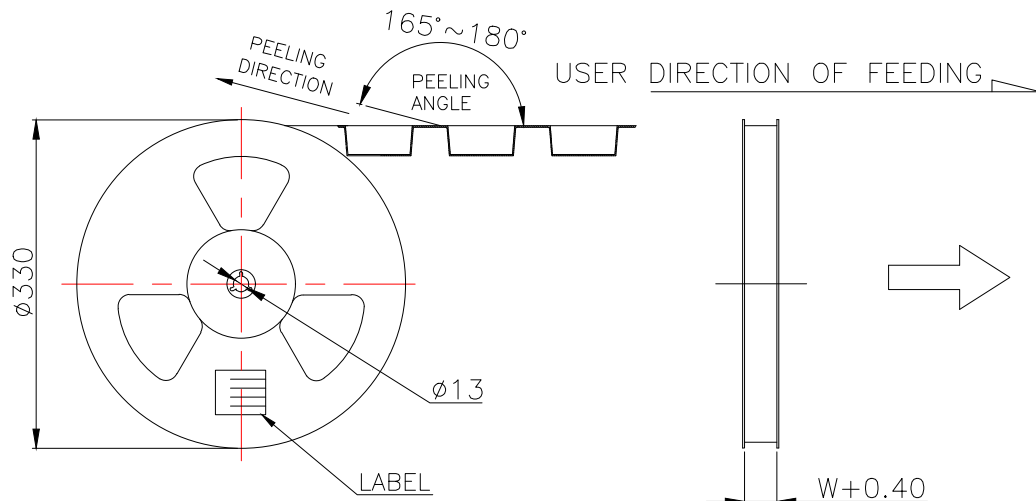
MANUFACTURE DWG		东莞市讯普电子科技有限公司 DongGuan XunPu Electronics Co., Ltd	
UNLESS OTHERWISE SPECIFIED TOLERANCES			TITLE: H2.60 ANTENNA SPRING TERMINAL, SMT T=0.10mm
DECIMALS:	ANGLES:		PAR ASP-D2611-B51
X.: $\pm 0.30$	X'': $\pm 2'$		DWN Lucas
X.X: $\pm 0.20$	X.X': $\pm 1'$		CHKD Ethan
X.XX: $\pm 0.15$	X.XX': $\pm 0.5'$		APVD Jacob
CUSTOMER COPY		SCALE: 1:1	UNIT: MM
		SIZE: A4	SHEET: 1F1
			REV: A



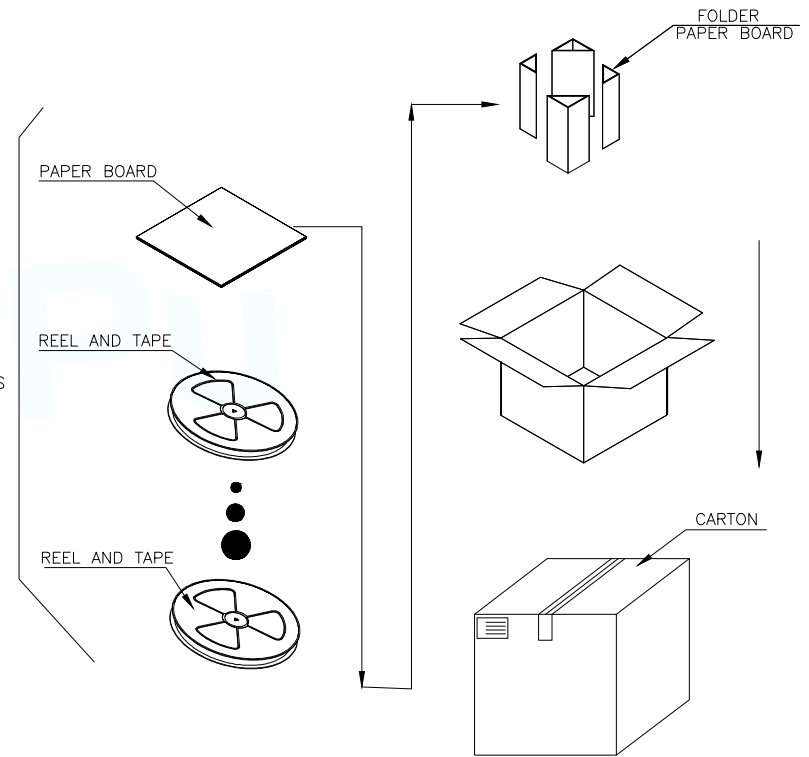
CONN. QTY./REEL	REEL QTY./CARTON	CONN. QTY./CARTON
5000	20	100,000



← PRODUCT PACKAGING DIRECTION  
 CUSTOMER TO USE DIRECTION →



TOTAL 20LAYERS



MANUFACTURE DWG		东莞市讯普电子科技有限公司 DongGuan XunPu Electronics Co.,Ltd	
UNLESS OTHERWISE SPECIFIED TOLERANCES			TITLE:H2.60 ANTENNA SPRING TERMINAL,SMT T=0.10mm
DECIMALS:	ANGLES:		PAR ASP-D2611-B51
X.:±0.30	X.:±2°		DWN Lucas
X.X:±0.20	X.X':±1°		CHKD Ethan
X.XX:±0.15	X.XX':±0.5°	CUSTOMER COPY	APVD Jacob
		SCALE:1:1	UNIT:MM
		SIZE:A4	UNIT:MM
		SHEET:1F1	REV:A