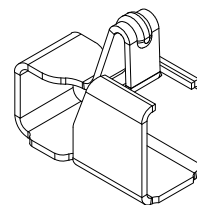
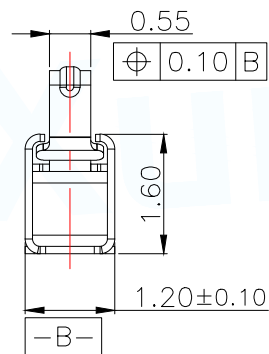
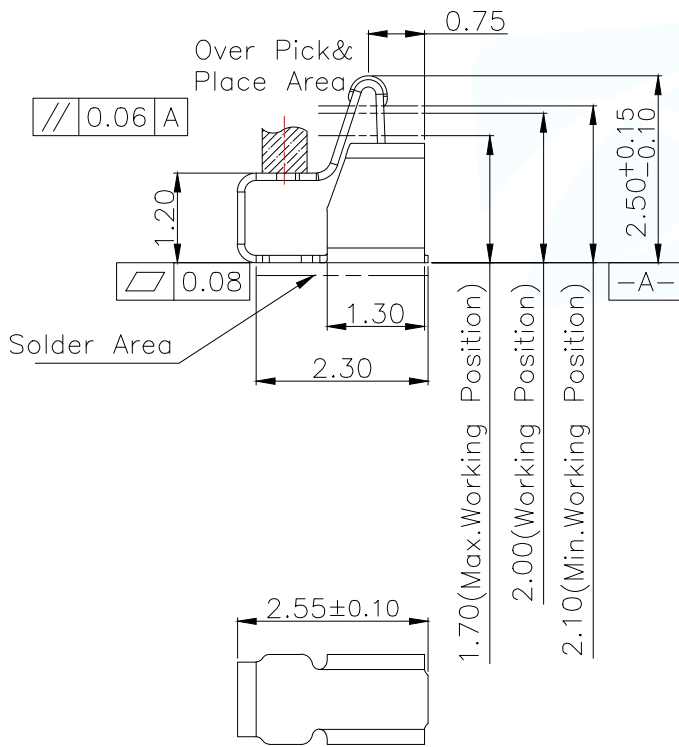
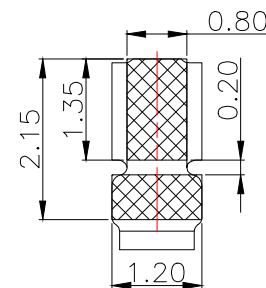


NOTES:

- 1:MATERIAL  
1-1: SUS-301 THICKNE=0.10MM
- 2:SPECIFICATIONS  
2-1: RATED CURRENT: 1.0A  
2-2: VOLTAGE RATING: 1.5V  
2-3: CONTACT RESISTANCE: 80mΩ/MAX  
2-4: WELDING THRUST: ≥3KG  
2-5: OPERATING TEMPERATURE: -40°C~+85°C
- 3:DURABILITY: 1500 CYCLES
- 4:SALT SPRAY TIME: 24H
- 5:ELECTROPLATE: THE NICKEL-PLATED SUBSTRATE IS 50u" MIN
- 6:REQUIREMENTS  
6-1:TERMINAL TO EAT FULL TIN,NOTPEELING, WELDING OBVIOUS COLOR AND OTHER ADVERSE  
6-2:ROHS.REACH.HF HALOGER ADVERSE OF DOMESTIC AND INTERNATIONAL ENVIRNMNTAL REQUIREMENTS

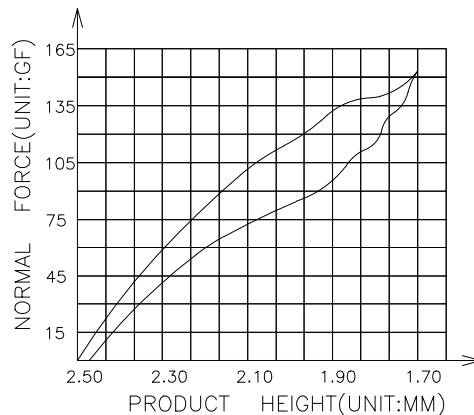


3D View



RECOMMENDED PCB LAYOUT

TOLERANCE:±0.05MM (FOR REFERENCE ONLY)



MANUFACTURE DWG		东莞市讯普电子科技有限公司 DongGuan XunPu Electronics Co.,Ltd	
UNLESS OTHERWISE SPECIFIED TOLERANCES		TITLE: ANTENNA SPRING H2.50mm PAR: ASP-D2505-B01	
DECIMALS:	ANGLES:	DWN: Lucas	CHKD: Ethan
X.:±0.30	X':±2°	APVD: Jacob	SCALE:1:1
X.X:±0.20	X.X':±1°	SIZE:A4	UNIT:MM
X.XX:±0.15	X.XX':±0.5°	SHEET:1F1	REV:A



CUSTOMER COPY

