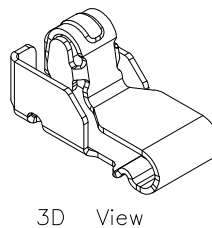
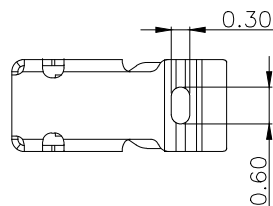
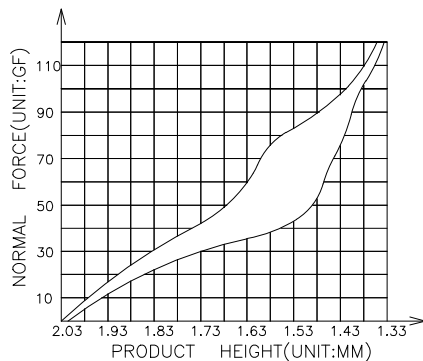
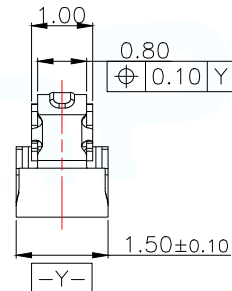
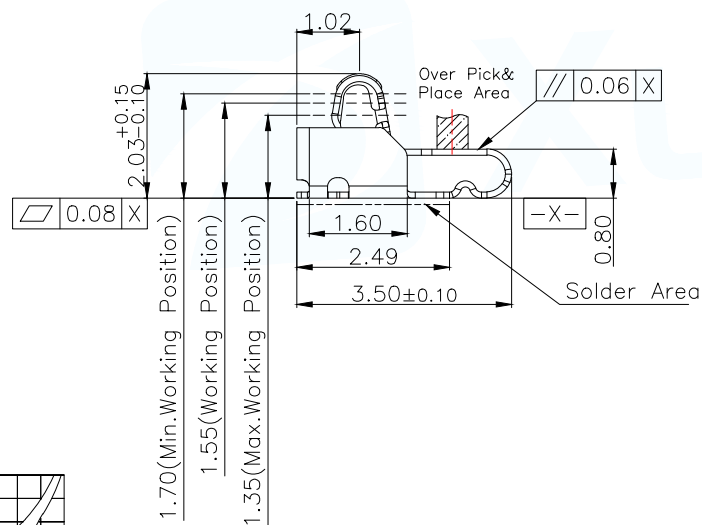
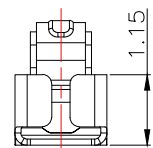
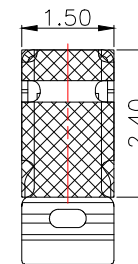


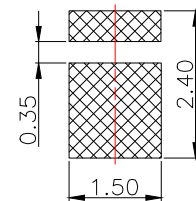
NOTES:
 1: MATERIAL
 1-1: TITANIUM COPPER THICKNE=0.10MM
 2: SPECIFICATIONS
 2-1: RATED CURRENT: 1.0A
 2-2: VOLTAGE RATING: 1.5V
 2-3: CONTACT RESISTANCE: 80mΩ/MAX
 2-4: WELDING THRUST: ≥3KG
 2-5: OPERATING TEMPERATURE: -40°C~+85°C
 3: DURABILITY: 1500 CYCLES
 4: SALT SPRAY TIME: 24H
 5: ELECTROPLATE: THE NICKEL-PLATED SUBSTRATE IS 50u" MIN
 6: REQUIREMENTS
 6-1: TERMINAL TO EAT FULL TIN, NOT PEELING, WELDING OBVIOUS COLOR AND OTHER ADVERSE
 6-2: ROHS, REACH, HF HALOGEN ADVERSE OF DOMESTIC AND INTERNATIONAL ENVIRONMENTAL REQUIREMENTS



3D View

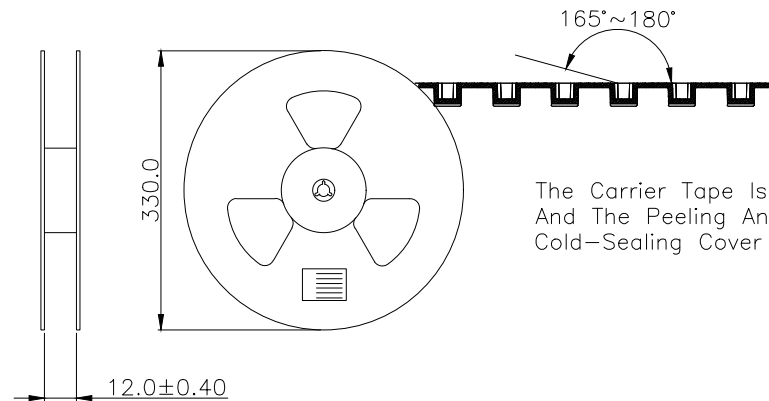
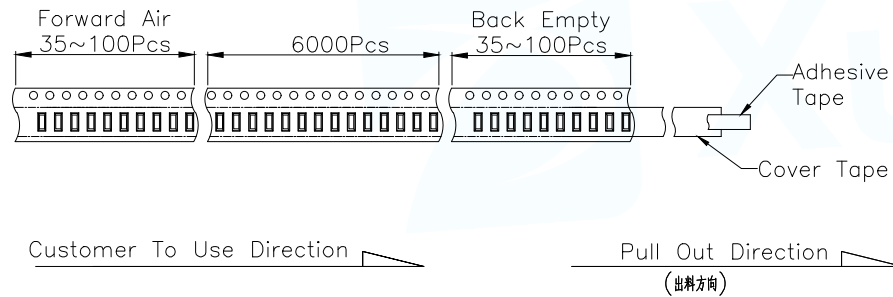
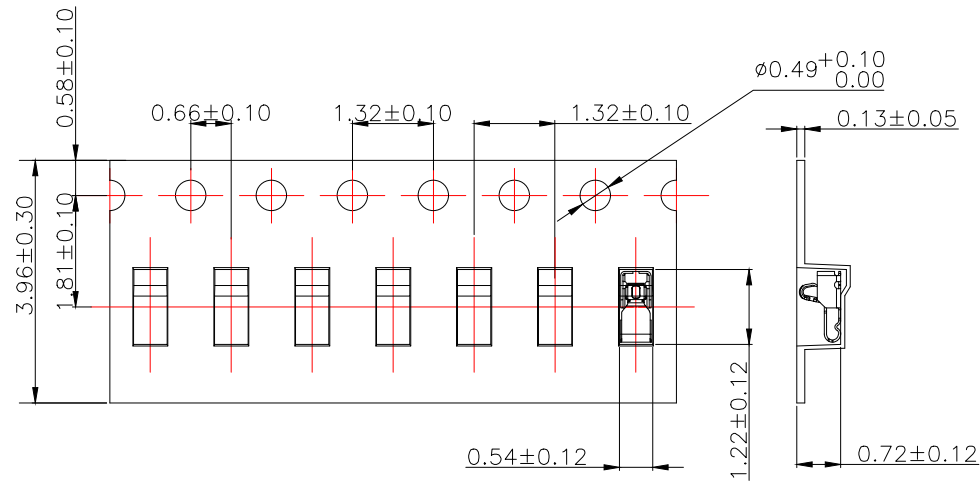


RECOMMENDED PCB LAYOUT
 TOLERANCE: ±0.05MM
 (FOR REFERENCE ONLY)

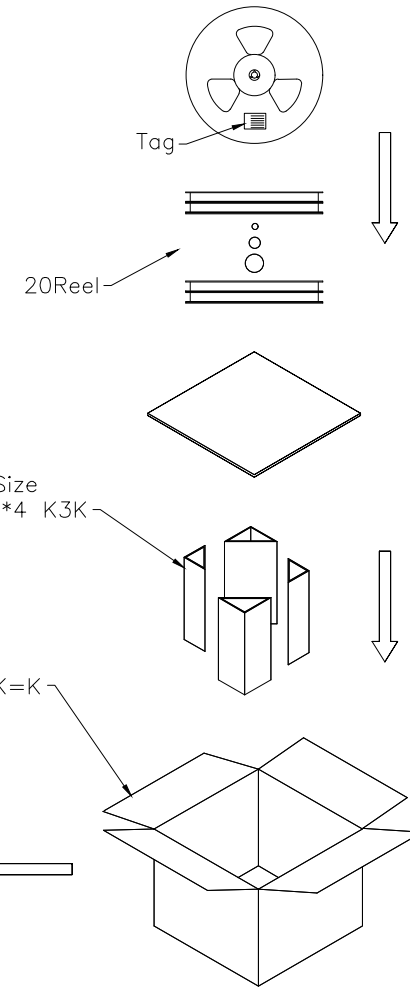


METAL MASK T=0.08
 TOLERANCE: ±0.05MM
 (FOR REFERENCE ONLY)

MANUFACTURE DWG		东莞市讯普电子科技有限公司 DongGuan XunPu Electronics Co., Ltd	
UNLESS OTHERWISE SPECIFIED TOLERANCES			TITLE: 无线弹片 L3.50*W1.50*H2.03
			PAR ASP-D2001-A51
			DWN Lucas
			CHKD Ethan
DECIMALS:	ANGLES:	APVD Jacob	SCALE: 1:1
X.: ±0.30	X': ±2°	SCALE: 1:1	UNIT: MM
X.X: ±0.20	X.X': ±1°	SIZE: A4	UNIT: MM
X.XX: ±0.15	X.XX': ±0.5°	SHEET: 1F1	REV: A



The Carrier Tape Is Cold-Sealed And The Peeling Angle Of The Cold-Sealing Cover Tape Is 165°~180°.



Carton Size 290*330*4 K3K

Carton Size 345*345*360 K=K

MANUFACTURE DWG		东莞市讯普电子科技有限公司 DongGuan XunPu Electronics Co.,Ltd	
UNLESS OTHERWISE SPECIFIED TOLERANCES			TITLE: 天线弹片 L3.50*W1.50*H2.03
			PAR ASP-D2001-A51
DECIMALS:	ANGLES:		DWN Lucas
X.:±0.30	X.':±2°		CHKD Ethan
X.X:±0.20	X.X':±1°	APVD Jacob	SCALE:1:1 UNIT:MM
X.XX:±0.15	X.XX':±0.5°	CUSTOMER COPY	SIZE:A4 SHEET:1F1 REV:A