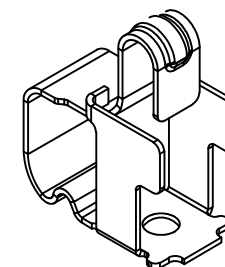


(For Reference Only)  
Stated At Compression



3D View

# NOTES:

## 1:MATERIAL

1-1: SUS-301 THICKNE=0.10MM

## 2:SPECIFICATIONS

2-1: RATED CURRENT: 1.0A

2-2: VOLTAGE RATING: 1.5V

2-3: CONTACT RESISTANCE: 80mΩ/MAX

2-4: WELDING THRUST: ≥3KG

2-5: OPERATING TEMPERATURE: -40°C~+85°C

3:DURABILITY: 1500 CYCLES

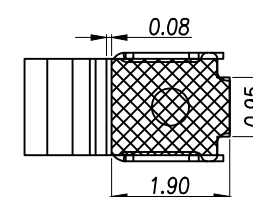
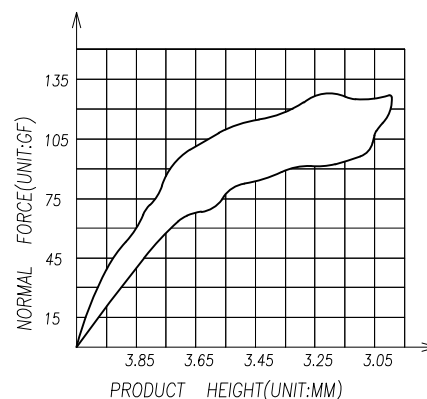
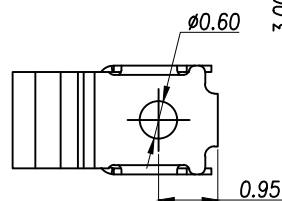
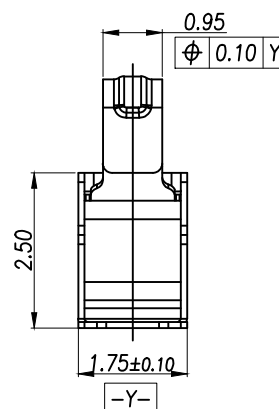
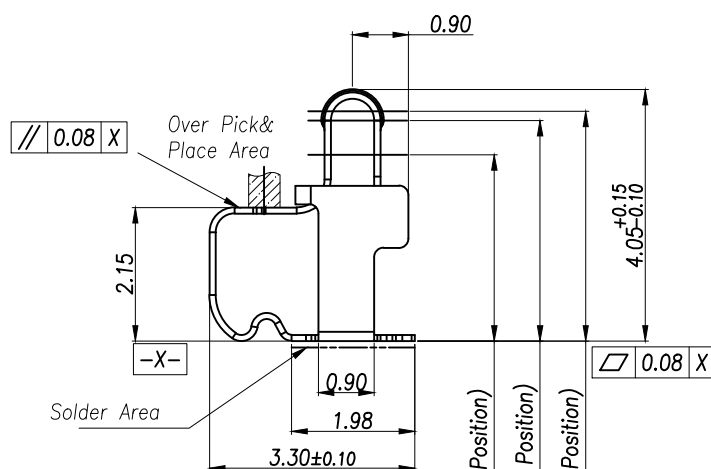
4:SALT SPRAY TIME: 24H

5:ELECTROPLATE: THE NICKEL-PLATED SUBSTRATE IS 50u" MIN

## 6:REQUIREMENTS

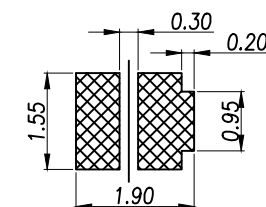
6-1:TERMINAL TO EAT FULL TIN,NOTPEELING,  
WELDING OBVIOUS COLOR AND OTHED ADVERSE

6-2:ROHS、REACH、HF HALOGER ADVERSE OF DOMESTIC  
AND INTERNATIONAL ENVIRONMNTAL REQUIREMENTS




RECOMMENDED PCB LAYOUT

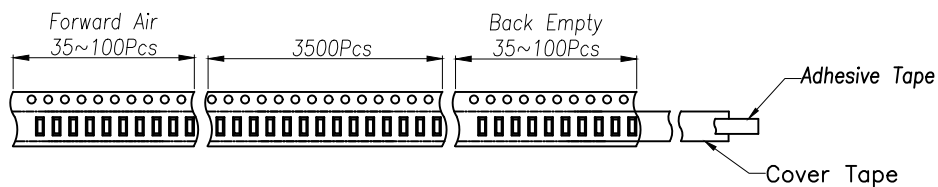
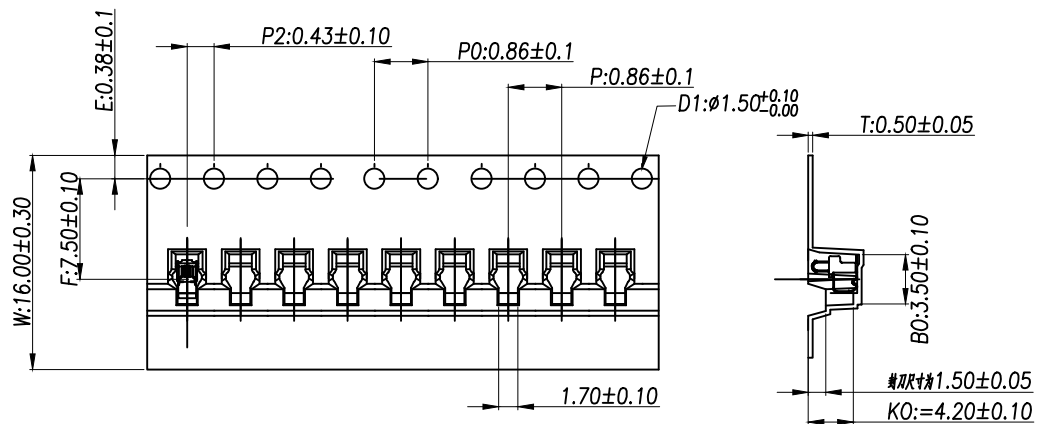
TOLERANCE:±0.05MM  
(FOR REFERENCE ONLY)



METAL MASK T=0.08

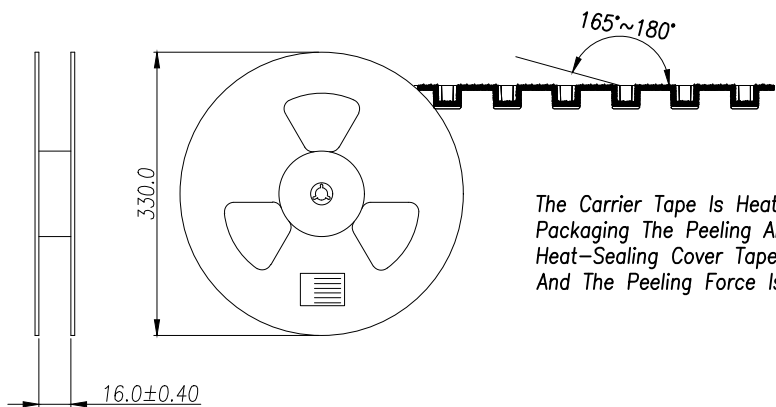
TOLERANCE:±0.05MM  
(FOR REFERENCE ONLY)

GENERAL TOLERANCES (UNLESS SOECIFIED)		SCALE: 1:1 UNIT: MM		<div> 瑾珩精密</div>	
DISTANCE ANGLE X. ±0.30    X.* ±2.0° .X ±0.20    .X* ±1.0° .XX ±0.15    .XX* ±0.5°		DRAWN BY		TITLE: 天线薄片 L3.30*W1.75*H4.05	
		LUDAH			
		CHEVKED BY			
		/			
DRAFT WHERE APPLICABLE APPROVED BY MUST REMAIN WITHIN DIMENSIONS				MANUFACTURE DWG	
		LUJIAH		PART NO. TP-T1-4011	
				SCALE N:A	SHEET 1:2

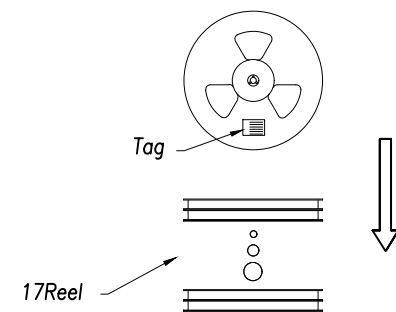


Customer To Use Direction

Pull Out Direction  
(出料方向)

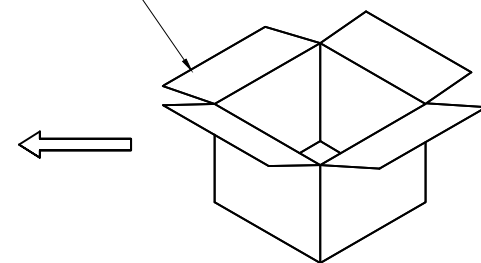
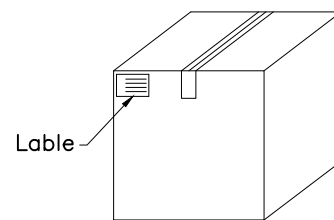



The Carrier Tape Is Heat-Sealed  
Packaging The Peeling Angle Of The  
Heat-Sealing Cover Tape Is 165°~180°  
And The Peeling Force Is 30~120g.



Carton Size  
290\*330\*4 K3K

Carton Size  
345\*345\*360 K=K



GENERAL TOLERANCES (UNLESS SOECIFIED)	SCALE: 1:1 UNIT: MM			瑾珩精密	
	DRAWN BY LUDAH				
DISTANCE ANGLE X. ±0.30    X.* ±2.0° .X ±0.20    .X* ±1.0° .XX ±0.15    .XX* ±0.5°	CHEVKED BY /		TITLE: 天线薄片 L3.30*W1.75*H4.05	MANUFACTURE DWG	
	DRAFT WHERE APPLICABLE APPROVED BY MUST REMAIN WITHIN DIMENSIONS				
LUJIAH		PART NO. TP-T1-4011	SCALE N:A	SHEET 2:2	