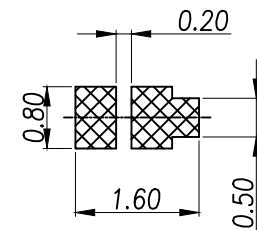
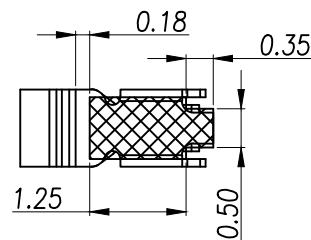
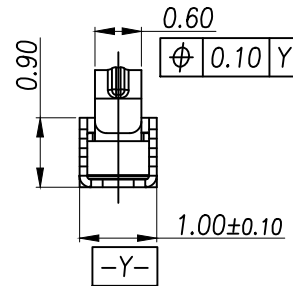
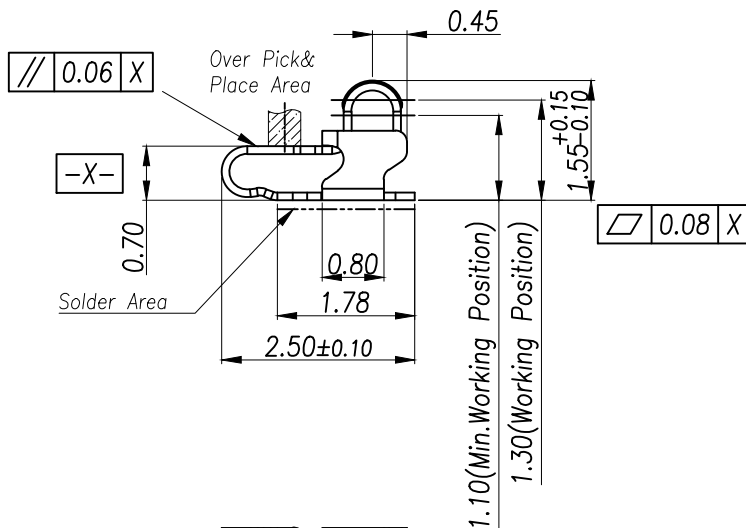


3D View

NOTES:
1:MATERIAL
1-1: SUS-304 THICKNE=0.10MM
2:SPECIFICATIONS
2-1: RATED CURRENT: 1.0A
2-2: VOLTAGE RATING: 1.5V
2-3: CONTACT RESISTANCE: 80mΩ/MAX
2-4: WELDING THRUST: ≥3KG
2-5: OPERATING TEMPERATURE: -40°C~+85°C
3:DURABILITY: 1500 CYCLES
4:SALT SPRAY TIME: 24H
5:ELECTROPLATE: THE NICKEL-PLATED SUBSTRATE IS 50u" MIN
6:REQUIREMENTS
6-1:TERMINAL TO EAT FULL TIN,NOTPEELING,
WELDING OBVIOUS COLOR AND OTHED ADVERSE
6-2:ROHS、REACH、HF HALOGER ADVERSE OF DOMESTIC
AND INTERNATIONAL ENVIRONMNTAL REQUIREMENTS

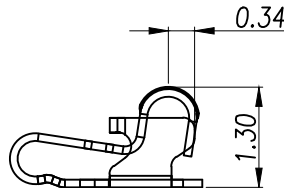
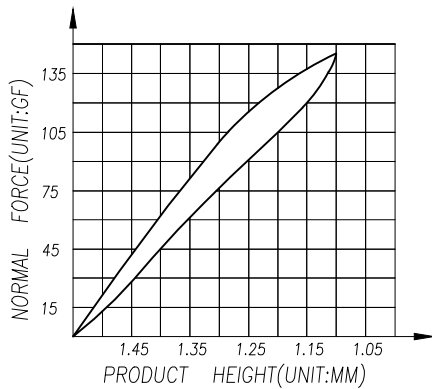


RECOMMENDED PCB LAYOUT


METAL MASK T=0.08

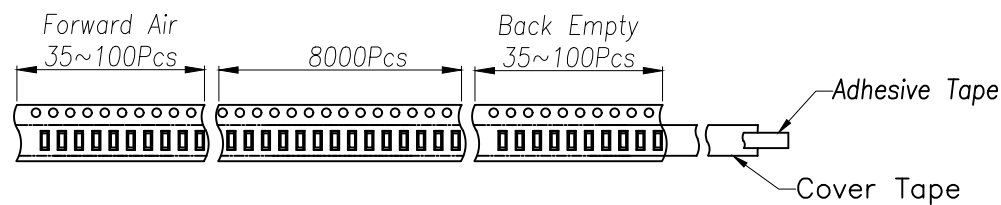
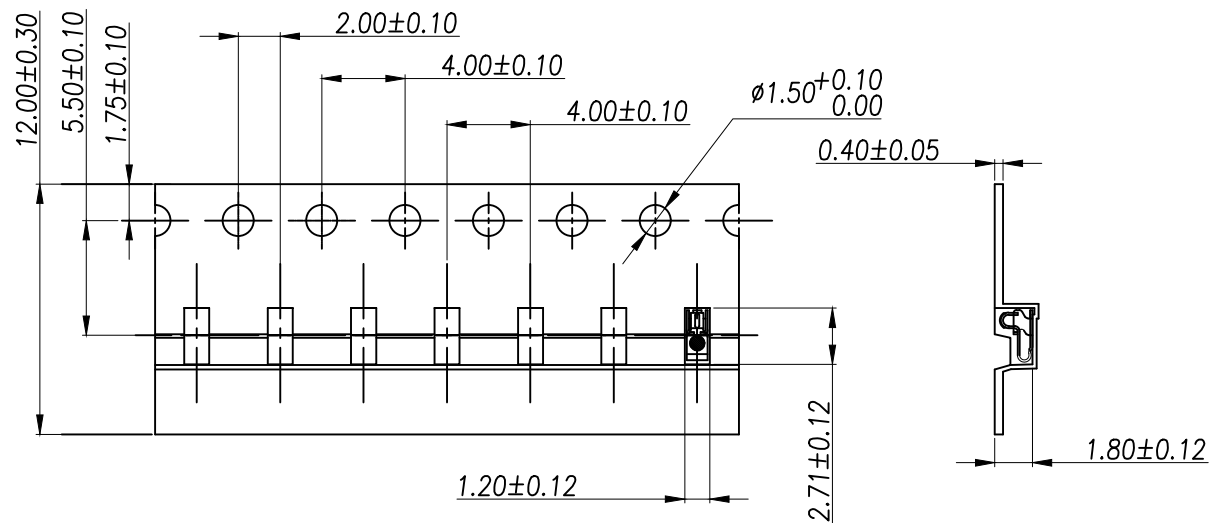
TOLERANCE:±0.05MM
(FOR REFERENCE ONLY)

TOLERANCE:±0.05MM
(FOR REFERENCE ONLY)



(For Reference Only)
Stated At Compression

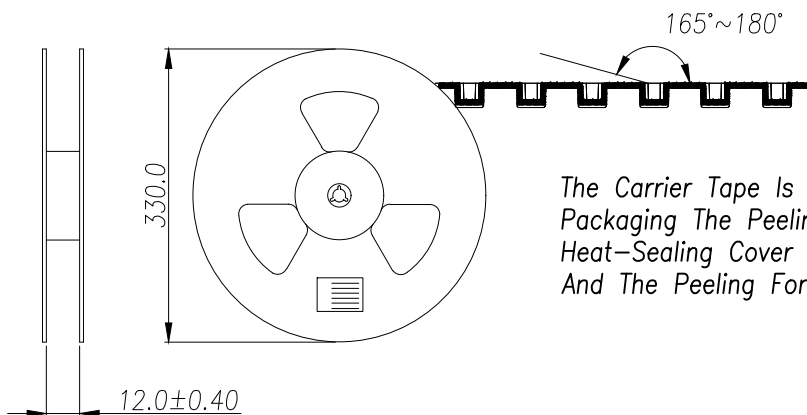
GENERAL TOLERANCES (UNLESS SOECIFIED)		SCALE: 1:1 UNIT: MM		 瑾珩精密	
DISTANCE ANGLE		DRAWN BY			
X. ±0.30	X.* ±2.0°	LUDAH		TITLE: 天线薄片 L2.50*W1.00*H1.55	
.X ±0.20	.X* ±1.0°	CHEVKED BY			
.XX ±0.15	.XX* ±0.5°	/		MANUFACTURE DWG	
DRAFT WHERE APPLICABLE APPROVED BY MUST REMAIN WITHIN DIMENSIONS				PART NO.	
		LUJIAH		TP-T0-1541	
				SCALE	SHEET
				N:A	1:2



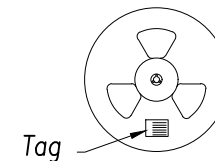
Customer To Use Direction

Pull Out Direction

(出料方向)



The Carrier Tape Is Heat-Sealed Packaging The Peeling Angle Of The Heat-Sealing Cover Tape Is 165°~180° And The Peeling Force Is 30~120g.



20Reel

Carton Size
290*330*4 K3K

Carton Size
345*345*360 K=K

Lable

GENERAL TOLERANCES
(UNLESS SOECIFIED)

SCALE: 1:1
UNIT: MM

DISTANCE ANGLE
X. ±0.30 X.* ±2.0°
.X ±0.20 .X* ±1.0°
.XX ±0.15 .XX* ±0.5°

DRAWN BY

LUDAH

CHEVKED BY

/

DRAFT WHERE APPLICABLE APPROVED BY
MUST REMAIN
WITHIN DIMENSIONS

LUJIAH



瑾珩精密

TITLE: 天线排片

L2.50*W1.00*H1.55

MANUFACTURE DWG

PART NO.

TP-T0-1541

SCALE

N:A

SHEET

2:2