

3D View

NOTES:

1:MATERIAL

1-1: SUS-304 THICKNE=0.08MM

2:SPECIFICATIONS

2-1: RATED CURRENT: 1.0A

2-2: VOLTAGE RATING: 1.5V

2-3: CONTACT RESISTANCE: 80mΩ/MAX

2-4: WELDING THRUST: >3KG

2-5: OPERATING TEMPERATURE: -40°C~+85°C

3:DURABILITY: 1500 CYCLES

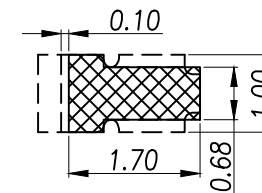
4:SALT SPRAY TIME: 24H

5:ELECTROPLATE: THE NICKEL-PLATED SUBSTRATE IS 50u" MIN

6:REQUIREMENTS

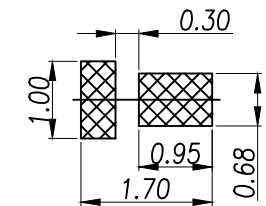
6-1:TERMINAL TO EAT FULL TIN,NOTPEELING,
WELDING OBVIOUS COLOR AND OTHER ADVERSE

6-2:ROHS.REACH.HF HALOGER ADVERSE OF DOMESTIC
AND INTERNATIONAL ENVIRONMNTAL REQUIREMENTS



RECOMMENDED PCB LAYOUT

TOLERANCE:±0.05MM
(FOR REFERENCE ONLY)



METAL MASK T=0.08

TOLERANCE:±0.05MM
(FOR REFERENCE ONLY)

GENERAL TOLERANCES
(UNLESS SOECIFIED)SCALE: 1:1
UNIT: MM

DISTANCE ANGLE
X. ±0.30 X.* ±2.0°
.X ±0.20 .X* ±1.0°
.XX ±0.15 .XX* ±0.5°

DRAWN BY

LUDAH

CHEVKED BY

/

DRAFT WHERE APPLICABLE APPROVED BY
MUST REMAIN
WITHIN DIMENSIONS

LUJIAH



瑾珩精密

TITLE: 天线弹片

L2.10*W1.00*H1.55

MANUFACTURE DWG

PART NO.

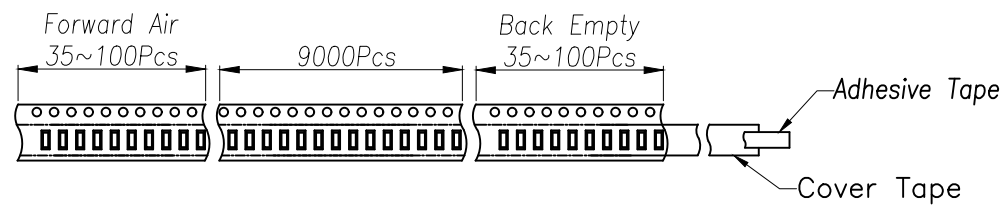
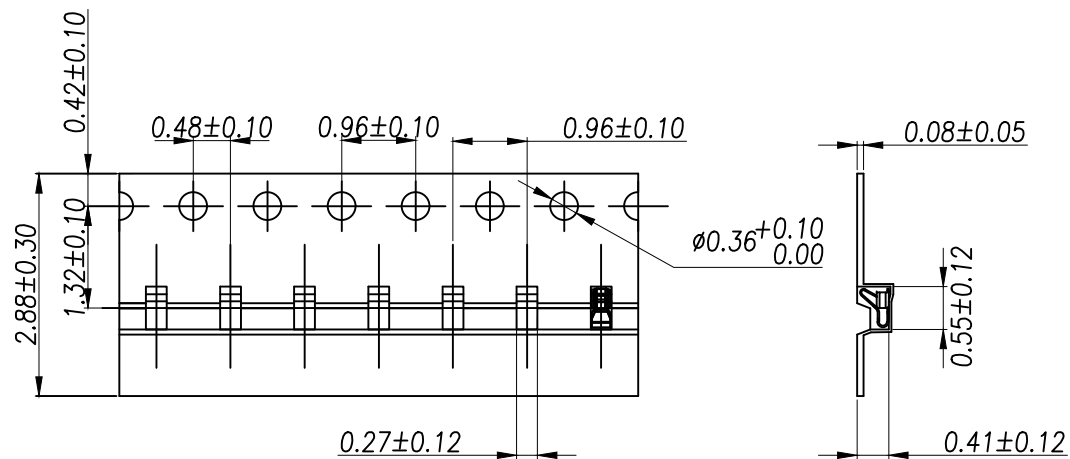
TP-T1-1531

SCALE

N:A

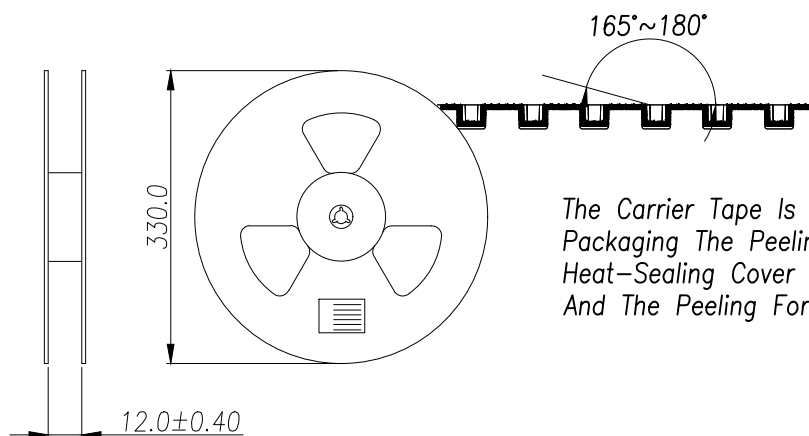
SHEET

1:2

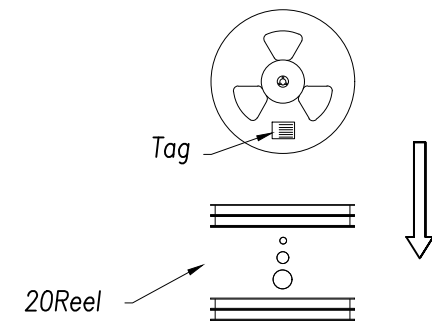


Customer To Use Direction

Pull Out Direction
(出料方向)

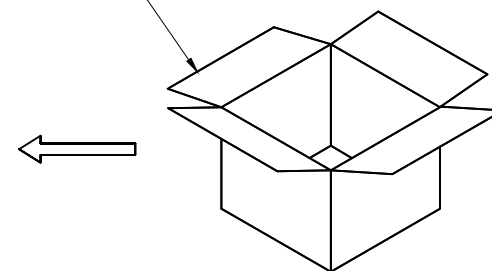
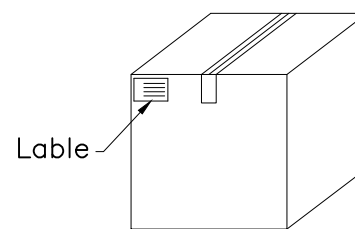



The Carrier Tape Is Heat-Sealed
Packaging The Peeling Angle Of The
Heat-Sealing Cover Tape Is 165°~180°
And The Peeling Force Is 30~120g.



Carton Size
290*330*4 K3K

Carton Size
345*345*360 K=K



| | | | | | | |
|---|------------------------|--|---|--|-------|-------|
| GENERAL TOLERANCES (UNLESS SOECIFIED) | SCALE: 1:1 UNIT: MM | | <div> 瑾珩精密</div> | | | |
| DISTANCE ANGLE X. ±0.30 X.* ±2.0° .X ±0.20 .X* ±1.0° .XX ±0.15 .XX* ±0.5° | DRAWN BY | | TITLE: 天线排片 L2.10*W1.00*H1.55 | | | |
| | LUDAH | | | | | |
| | CHECKED BY | | MANUFACTURE DWG | | | |
| | / | | | | | |
| DRAFT WHERE APPLICABLE APPROVED BY MUST REMAIN WITHIN DIMENSIONS | | | PART NO. TP-T1-1531 | | SCALE | SHEET |
| | LUJIAH | | | | N:A | 2:2 |