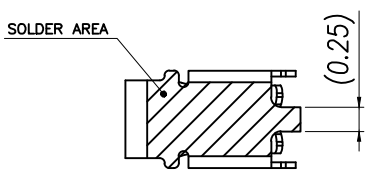
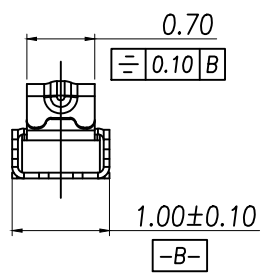
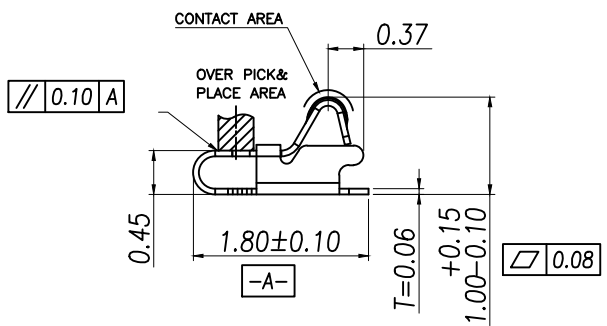
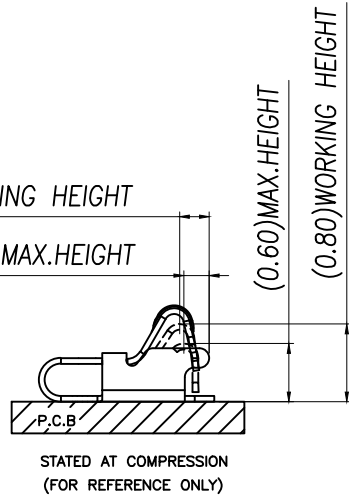



RECOMMENDED PCB LAYOUT  
TOLERANCE ±0.05 (除註明外)

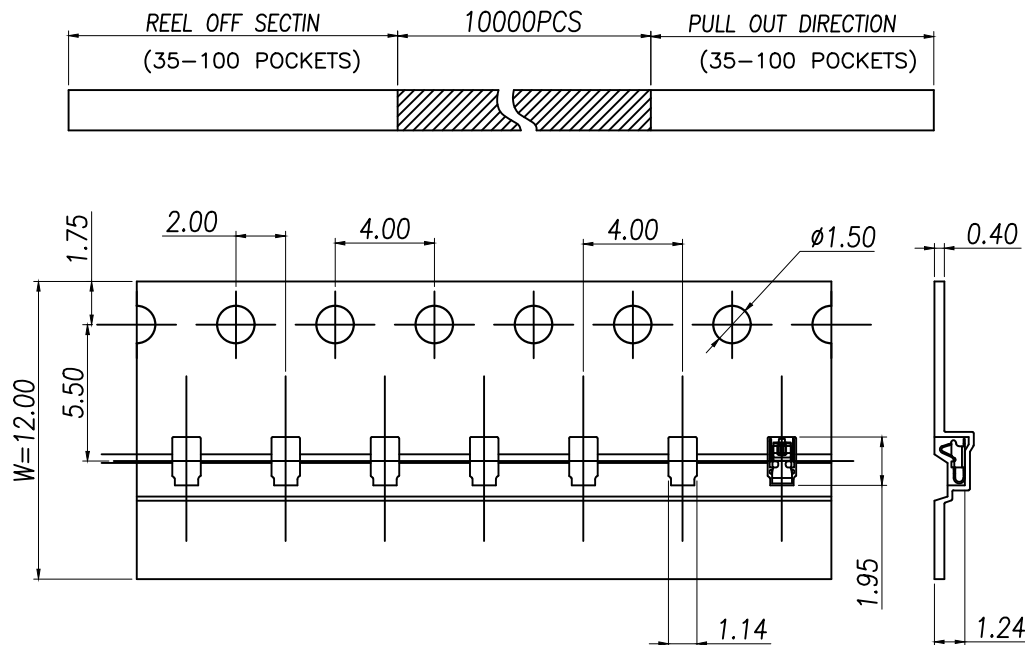


(0.31) WORKING HEIGHT  
(0.26) MAX. HEIGHT

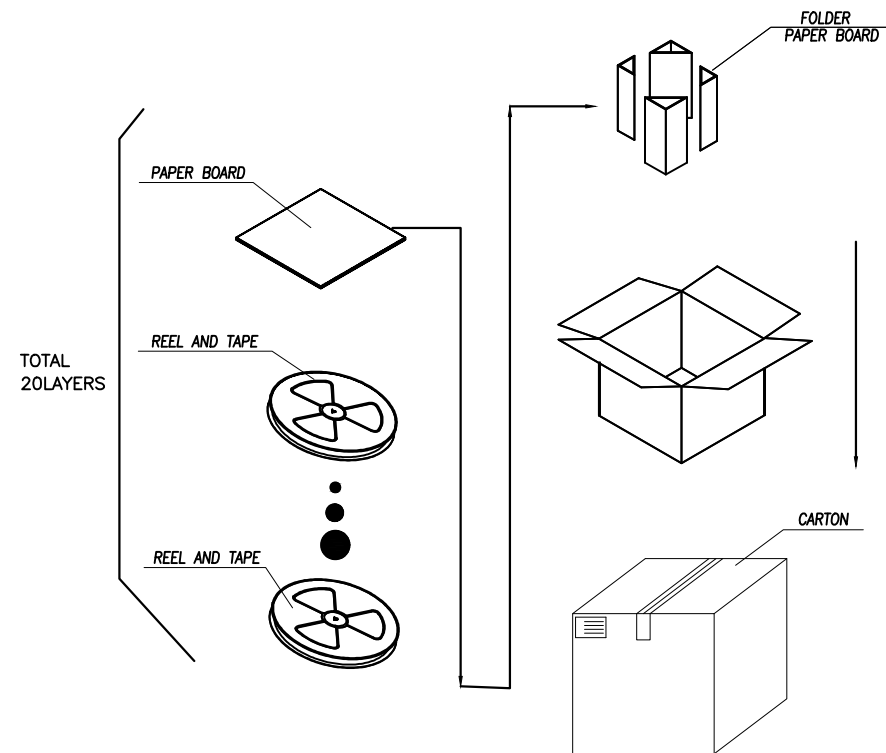
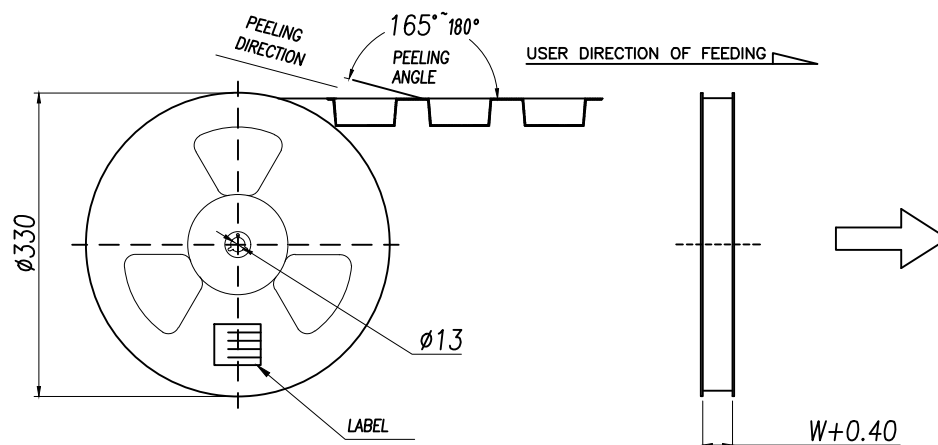



- NOTES
- (1) MATERIAL: SUS-301 THICKNESS=0.06mm
  - (2) PRODUCT SPECIFICATIONS:
    - 2-1: RATED CURRENT: 1.0A
    - 2-2: VOLTAGE RATING: 1.50V
    - 2-3: CONTACT RESISTANCE: 80mΩ/MAX
    - 2-4: WELDING THRUST: ≥ 3KG
    - 2-5: OPERATING TEMPERATURE: -40°C ~ +85°C
    - 2-6: DURABILITY: 1500 CYCLES
  - (3): SALT SPRAY: 24 HOURS
  - (4): FINISH: 50u"Min NICKEL UNDERPLATING OVER ALL.
  - (5): REQUIREMENTS
    - 5-1: TERMINAL TO EAT FULL TIN, NOT PEELING WELDING OBVIOUS COLOR AND OTHER ADVERSE
    - 5-2: ROHS, REACH, HF HALOGEN ADVERSE OF DOMESTIC AND INTERNATIONAL ENVIRONMENTAL REQUIREMENTS

GENERAL TOLERANCES (UNLESS SPECIFIED)	SCALE: 1:1 UNIT: MM	 瑾珩精密	
	DRAWN BY LUDAH		
DISTANCE ANGLE X. ±0.30 X.* ±2.0° .X ±0.20 .X* ±1.0° .XX ±0.15 .XX* ±0.5°	CHECKED BY /	TITLE: 天线薄片 H1.00 ANTENNA	
	DRAFT WHERE APPLICABLE APPROVED BY MUST REMAIN WITHIN DIMENSIONS	PART NO. TP-T0-1021	MANUFACTURE DWG
	LUJIAH	SCALE N:A	SHEET 1:2



← PRODUCT PACKAGING DIRECTION  
CUSTOMER TO USE DIRECTION →



GENERAL TOLERANCES (UNLESS SOECIFIED)	SCALE: 1:1 UNIT: MM		 瑾珩精密			
DISTANCE ANGLE X. $\pm 0.30$ X.* $\pm 2.0^{\circ}$ .X $\pm 0.20$ .X* $\pm 1.0^{\circ}$ .XX $\pm 0.15$ .XX* $\pm 0.5^{\circ}$	DRAWN BY		TITLE: 天线薄片 H1.00 ANTENNA			
	LUDAH					
	CHEVKED BY		MANUFACTURE DWG			
	/					
DRAFT WHERE APPLICABLE APPROVED BY MUST REMAIN WITHIN DIMENSIONS			PART NO. TP-T0-1021		SCALE	SHEET
	LUJIAH				N:A	2:2