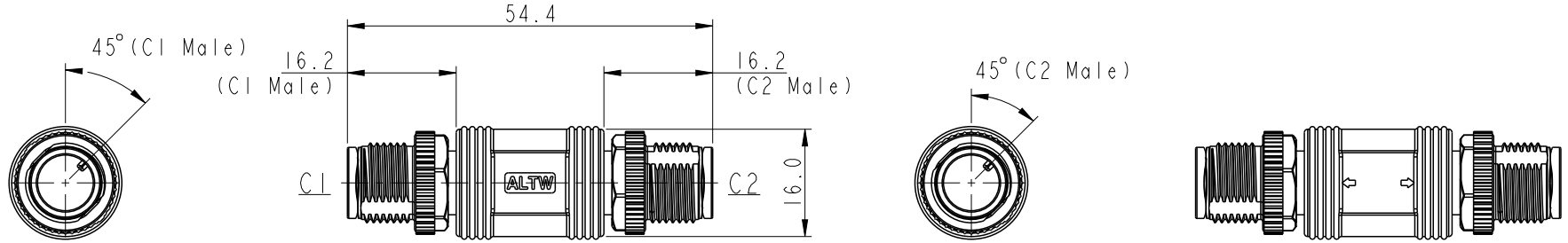
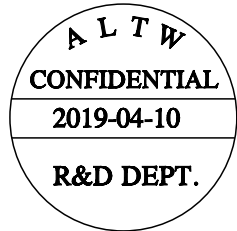
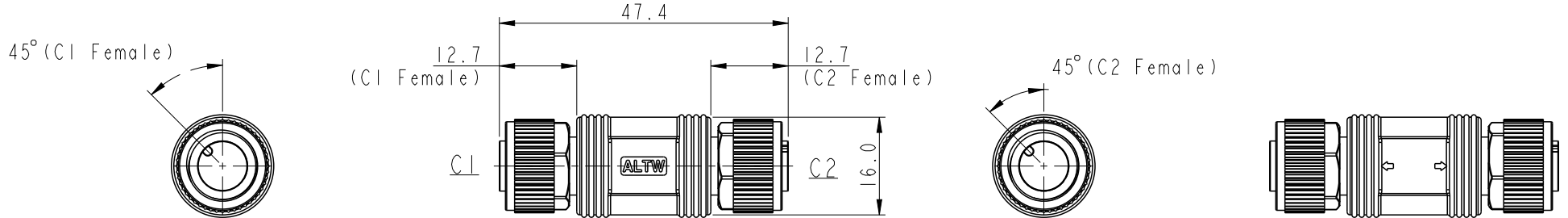


REV.	ECN NO.	DATE	SIGN	DESCRIPTION
A		2019/04/10	Bovan Lu	Initial Released.

### Male Connector Position & Key Direction



### Female Connector Position & Key Direction



- Note:
- \* IP: IP68 (1M/24Hr.)
  - \* Connector: Thermoplastic
  - \* Pin: Copper Alloy
  - \* Nut: Metal
  - \* Other:

\* This drawing is common drawing of series products.  
 The figure only shows individual position and key direction of male/female connectors.  
 Specific state of C1,2 connectors depends on part number. (see sheet 2/3)

UNIT:mm TOLERANCE ±0.5mm		TITLE MI2, A-Code, I-Adaptor		<h1>Amphenol LTW</h1> 安費諾亮泰企業股份有限公司	ITEM NO	DRAWN BY Bovan Lu	DATE 2019-04-10		
		SCALE 1:1	SIZE A4		SHEET 1	OF 3	DWG NO IA-AXXX-AXXX-0000-XX	CHECKED BY Neo Tsai	DATE 2019-04-10
		REV. A	WC-REV. A.14		Inspection item		CUSTOMER ALTW	APPROVED BY Max Yang	DATE 2019-04-10

THIS DOCUMENT IS SUBJECT TO CHANGE WITHOUT NOTICE. IT IS CONFIDENTIAL AND A PROPERTY OF Amphenol LTW. DISCLOSURE TO THIRD PARTY HAS TO BE AUTHORIZED BY Amphenol LTW.

THIS DOCUMENT IS SUBJECT TO CHANGE WITHOUT NOTICE. IT IS CONFIDENTIAL AND A PROPERTY OF Amphenol LTW. DISCLOSURE TO THIRD PARTY HAS TO BE AUTHORIZED BY Amphenol LTW.

1 A - A X X X - A X X X - 0 0 0 0 - X X

-01: All connectors have the same number of pins.

C1 Connector Type

03: 3 pin  
04: 4 pin  
:  
12: 12 pin

C1 Gender

M: Male Connector, Male Pin  
F: Female Connector, Female Pin

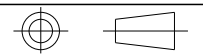
C2 Connector Type

03: 3 pin  
04: 4 pin  
:  
12: 12 pin

C2 Gender

M: Male Connector, Male Pin  
F: Female Connector, Female Pin

UNIT:mm



TOLERANCE

—

TITLE MI2, A-Code, 1-Adaptor			
SCALE 1:1	SIZE A4	SHEET 2 OF 3	
REV. A	WC-REV. A.14	Ⓞ: Inspection item	

**Amphenol LTW**

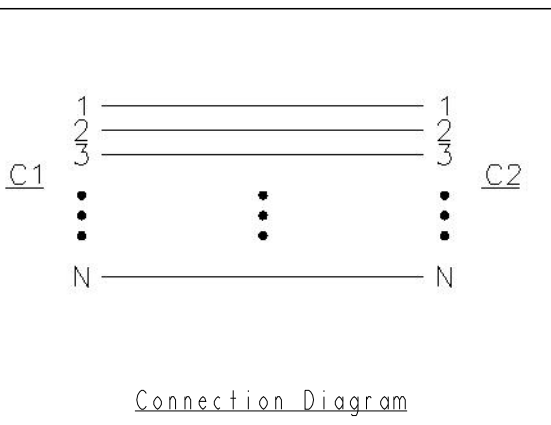
安費諾亮泰企業股份有限公司

ITEM NO	DRAWN BY Bovan Lu	DATE 2019-04-10
DWG NO 1A-AXXX-AXXX-0000-XX	CHECKED BY Neo Tsai	DATE 2019-04-10
CUSTOMER ALTW	APPROVED BY Max Yang	DATE 2019-04-10

THIS DOCUMENT IS SUBJECT TO CHANGE WITHOUT NOTICE. IT IS CONFIDENTIAL AND A PROPERTY OF AMPHENOL LTW. DISCLOSURE TO THIRD PARTY HAS TO BE AUTHORIZED BY AMPHENOL LTW.

		A-code						
		3 Pin	4 Pin	5 Pin	6 Pin	8 Pin	10 Pin	12 Pin
F	Male							
	Female							
		Pin#    Color	Pin#    Color	Pin#    Color	Pin#    Color	Pin#    Color	Pin#    Color	Pin#    Color
D		Pin1    Black Pin3    White Pin4    Blue	Pin1    Black Pin2    White Pin3    Blue Pin4    Green	Pin1    Black Pin2    White Pin3    Blue Pin4    Green Pin5    Red	Pin1    Black Pin2    White Pin3    Blue Pin4    Green Pin6    Red Pin7    Gray	Pin1    Black Pin2    White Pin3    Blue Pin4    Green Pin5    Red Pin6    Gray Pin7    Yellow Pin8    Orange	Pin1    Black Pin2    White Pin3    Blue Pin4    Green Pin5    Red Pin6    Gray Pin7    Yellow Pin8    Orange Pin9    Brown Pin10   Purple	Pin1    Black Pin2    White Pin3    Blue Pin4    Green Pin5    Red Pin6    Gray Pin7    Yellow Pin8    Orange Pin9    Brown Pin10   Purple Pin11   White/Red Pin12   Pink

Pin Assignments Front View



A	UNIT:mm			TITLE MI2, A-Code, 1-Adaptor			ITEM NO	DRAWN BY Bovan Lu	DATE 2019-04-10
	TOLERANCE	SCALE 1:1    SIZE A4    SHEET 3 OF 3			DWG NO IA-XXXX-XXXX-0000-XX		CHECKED BY Neo Tsai	DATE 2019-04-10	
		REV. A	WC-REV. A.14		CUSTOMER ALTW		APPROVED BY Max Yang	DATE 2019-04-10	

**Amphenol LTW**  
安費諾亮泰企業股份有限公司