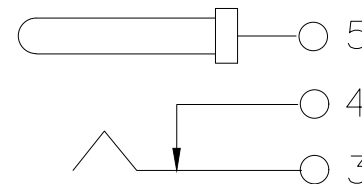


P/N	PIN	Rated electrical load
DC-509-ARL130-H142	$\phi 1.3$	DC 24V 3A
DC-509-ARL200-H142	$\phi 2.0$	DC 30V 5A
DC-509-ARL250-H142	$\phi 2.5$	DC 30V 5A

Main technical performance	
Contact resistance	$\leq 0.03\Omega$
Insulation resistance	$\geq 100M\Omega$ (DC250V)
Pressure resistance	AC500V(50Hz)/MIN
Insertion force	3-20N
extraction force	8~15N
Operating temperature range	-40C°~+85C°
service life	5000cycles



SCHMATIC

序号	名称	数量	材料	备注
6	插针	1	H59黄铜棒	镀银
5	平片	1	H62黄铜带(Y) $\delta=0.30mm$	镀银
4	弯片	1	H62黄铜带(Y) $\delta=0.35mm$	镀银
3	簧片	1	磷铜 $\delta=0.30mm$	镀银
2	后盖	1	PPA	黑
1	底座	1	PPA	黑

MANUFACTURE DWG		东莞市讯普电子科技有限公司 DongGuan XunPu Electronics Co.,Ltd	
UNLESS OTHERWISE SPECIFIED TOLERANCES		TITLE: DC SOCKET	
DECIMALS:			PAR DC-509-ARLXXX-H142
ANGLES:			DWN Lucas
X.: ± 0.20	X*: $\pm 1^{\circ}$		CHKD Ethan
X.X: ± 0.10	X.X*: $\pm 0.5^{\circ}$		APVD Jacob
X.XX: ± 0.05		SCALE:1:1	UNIT:MM
CUSTOMER COPY		SIZE:A4	SHEET:1F1
			REV:A