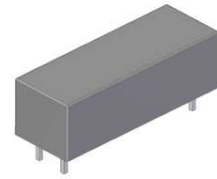


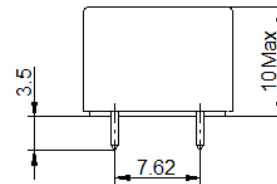
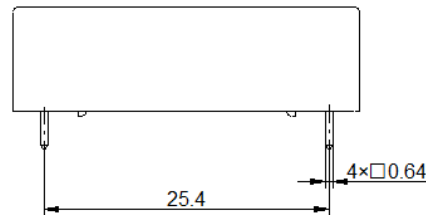
HVR12-2A06

- High Voltage Reed Relay
- Low Contact Resistance
- Breakdown up to 6KV
- Excellent Lifetime Characteristics
- Custom Design Available

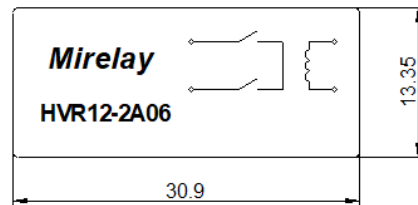


[Outline Dimension]

Unit: mm Scale: 1/1

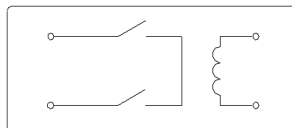


19



[Pin Layout]

[Top View]



Order Information

HVR12-2A06

Coil Parameters		Relay Parameters	
1 Nominal coil voltage	12 VDC	1 Min Breakdown Voltage	6K VDC
2 Max Operating voltage	16 VDC	2 Dielectric Strength coil/contact	6K VDC
3 Max Pull-in voltage	9 VDC	3 Insulation Resistance coil/contact	1.00E+12ohm
4 Min Drop-out voltage	1 VDC	4 Operate Time, incl. Bounce	1.0ms
5 Coil Resistance	250 ohm	5 Reset Time	0.1ms
Contact Parameters		6 Capacitance Across Contacts	0.4pF
1 Contact Form	1 Form A	7 Storage Temperature	-35~+105°C
2 Max Contact Rating	100 W	8 Operating Temperature	-20~+70°C
3 Max Switch Voltage	1KV ACpeak/DC	9 Soldering Temperature	5 sec. max 260°C
4 Max Switch Current	1.0 A		
5 Max Carrying Current	2.5 A		
6 Min Breakdown Voltage	6K VDC		
7 Max Contact Resistance	300 mohm		

Version: 01

Designed by

Checked by

Approved by

Date

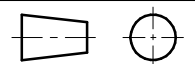
27th,Dec,2021

TITLE

High Voltage Reed Relay

P/N

HVR12-2A06



Scale: 1:1

Page: 1/1