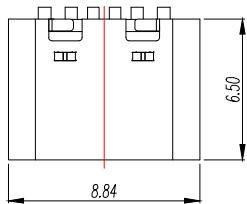
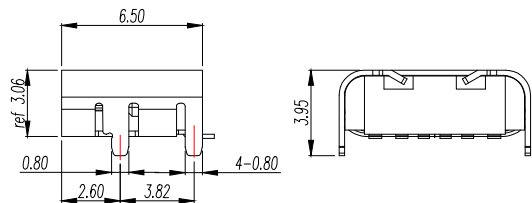
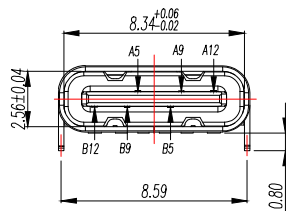


A		B		C		D		E	
REV.	DESCRIPTION				ECN NO.	NAME	DATE		

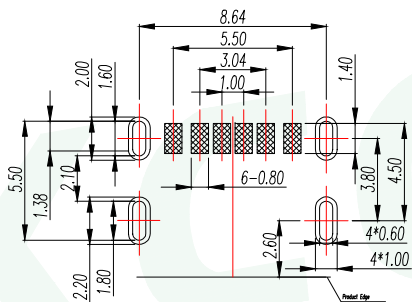
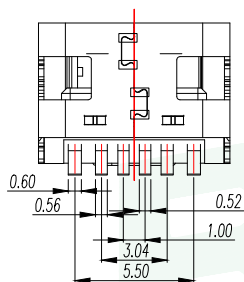
1



2



3



RECOMMENDED PCB LAYOUT
GENERAL TOLERANCE ±0.05

4

PIN ASSIGNMENTS

A5	CC1	B12	GND
A9	VBUS	B9	VBUS
A12	GND	B5	CC2
PIN	SIGNAL NAME	PIN	SIGNAL NAME

5

备注(NOTE): 1 材质:

- 1.1 胶芯: LCP UL94 V-0
- 1.2 端子: (C2680, 镍底, 镀金0.5U)
- 1.3 外壳: 不锈钢304—表面镀镍50U

2. 电气特性:

2.1. 接触区: 接触电阻30mQMax,
允许10mΩ变化量,

测试条件: 20mv, 100mA 下测量,

2.2. 额定电流: 最大3A

2.3. 额定电压: 5V.

2.4. 耐电电压: 100VAC.

2.5. 绝缘电阻: 至少100兆欧

3. 机械性能:



3.1. 插入力: 0.5—2.0Kg

3.2. 拔出力: 0.8—2.0Kg

3.3. 插拔次数: 5000+.

4. 工作环境: -20℃to +85℃

4.1. 盐雾测试: 24H

GENERAL TOLERANCE		DONGGUAN BAOXUN PRECISION TECHNOLOGY CO., LTD				 
DIM. TOL.		TITLE: TYPE-C 6P SMT 四脚插板				
X ±0.30		DWG. NO.: UC17-OB06F65011		DRAWN: MAX		
X.X ±0.25		PART NO.: UC17-OB06F65011		CHECKED: ELLA		
X.XX ±0.15		UNIT: mm		APPROVED: WILL		
X.XXX ±0.15		SCALE: none	SHEET: 1 of 1	DWG. SIZE: A4	LAYER: bxconn	
GENERAL ANGLE: ±3°						