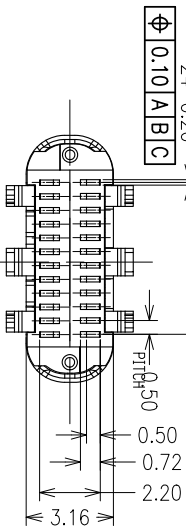
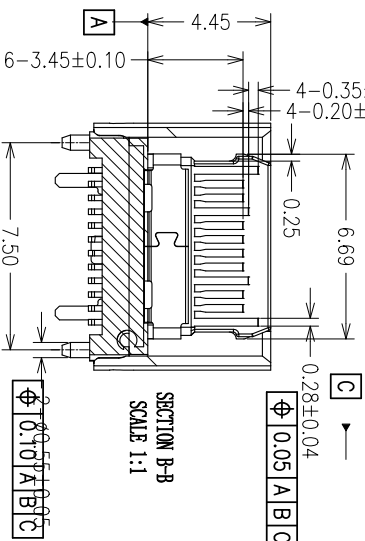
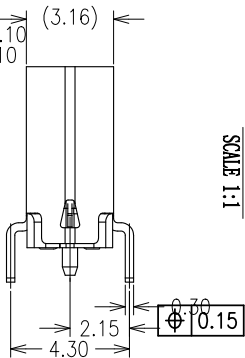
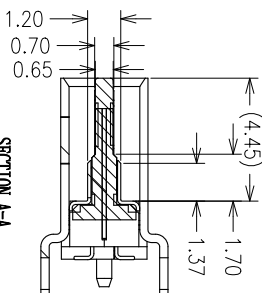
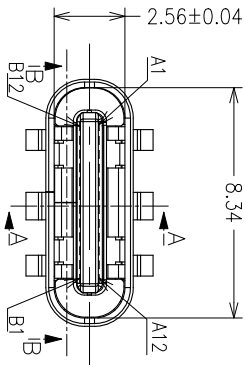
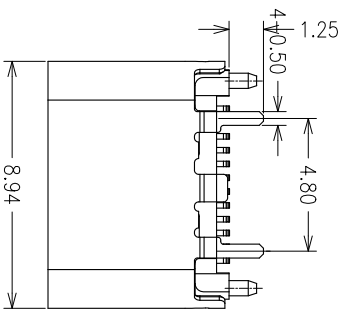
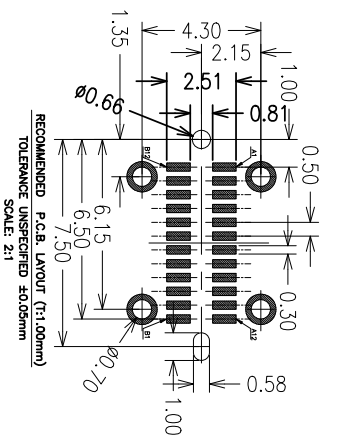


RoHS



NOTES:

- 1. MOLDING: LCP UL94 V-0
- 2. CONTACT: COPPER ALLOY.
- 3. GOLD PLATING ALL OVER 50u" Min NICKEL AND 100u" Min Tin ALL OVER 50u" Min NICKEL ON SOLDER AREA
- 4. SHELL: SUS304-H,T=0.30±0.03mm 50u" NICKEL PLATING OVER ALL.
- 5. SHLD:SUS304-H,T=0.12±0.03mm
- 6. INSERTION: 5~20N.
- 7. EXTRACTION: 8~20N AFTER TEST .
- 8. DURABILITY: 10000 CYCLES
- 9. ELECTRICAL:
  - 10. CURRENT: 5A FOR VBUS;
  - 11. 1.25A FOR GND PIN.
  - 12. 0.25A FOR OTHER.
- 13. VOLTAGE: 20 V MAX
- 14. WITHSTANDING VOLTAGE: 100V AC R.M.S
- 15. CONTACT RESISTANCE: 40mΩ MAX.
- 16. INSULATION RESISTANCE: 100MΩ MIN.
- 17. ENVIRONMENTAL
- 18. TEMPERATURE RANGE -55°C ~ +85°C



Pin Name	Signal	Description	Pin Name	Signal	Description
A1	GND	Ground return	B12	GND	Ground return
A2	SST01	Positive half of first differential pair	B11	SST01	Positive half of first differential pair
A3	SST01	Second differential pair	B10	SST01	Second differential pair
A4	Vbus	Bus Power	B9	Vbus	Bus Power
A5	CC1	Configuration	B8	SST02	Stashed line (GND)
A6	Bp1	Positive half of the USB 2.0 differential pair-Position 1	B7	Bm1	Negative half of the USB 2.0 differential pair-Position 1
A7	Bn1	Negative half of the USB 2.0 differential pair-Position 1	B6	Bp2	Positive half of the USB 2.0 differential pair-Position 2
A8	SST01	Stashed line (GND)	B5	CC2	Configuration
A9	Vbus	Bus Power	B4	Vbus	Bus Power
A10	SST02	Second differential pair	B3	SST02	Second differential pair
A11	SST02	Positive half of second differential pair	B2	SST02	Positive half of second differential pair
A12	GND	Ground return	B1	GND	Ground return

产品图

公差一览表

TOLERANCE UNLESS OTHERWISE	公差
X	±0.35
X	±0.25
XX	±0.20
XXX	±0.05
X	±5.°
X	±2.°
XX	±1.°
XXX	±0.5°

深圳市精拓金电子有限公司  
Shenzhen Jing Tuo Jin Electronics Co., Ltd.

单位	MM	制图	L-S-S	制图料号	918-418K2021V40008
比例	1:1	审核	郭治富	产品名称	TYPE-C3.1母座直立式四脚带小脚有双排贴片ESL SLOP 屏蔽24PIN
日期	2021-03-10	核准	黄国荣	角法	版本
DATE	APPD	APPD		角法	版本
					A0