

PRECISION BOARD STACKING STANDOFF

SO SERIES

SO

Use With:

QXH, QXE, QXS,
QXSS, QRX8, ERX5,
ERX6, ERX8, LSHM,
LSS, LSEM, SX4, SX5, XLH

SPECIFICATIONS

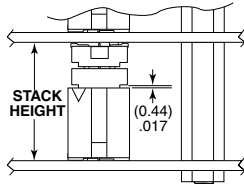
Material:

Aluminum

Locking Compound:

Nylon

INDUSTRY STANDARD SOLUTIONS



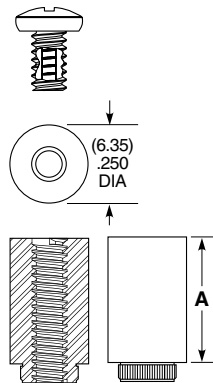
Requires Standoff
SO-1524-03-01-01-L or
JSOM-1524-02 for 15.24 mm
or SO-2200-03-01-01-L
for 22 mm board spacing.
Connectors designed to not
fully seat when mated.
For more information on the JSOM,
visit samtec.com?JSOM

INDUSTRY STANDARD	INTERCONNECTS			
	TERMINAL	SOCKET	BANKS	STACK HEIGHT
SUMIT™	ASP-129637-01	ASP-129646-01	1	15.24 mm
PCI/104-Express™	ASP-129637-03	ASP-129646-03	3	15.24 mm
PCI/104-Express™	ASP-129637-13	ASP-129646-22	1	15.24 mm
PCI/104-Express™	ASP-142781-01	ASP-129646-01	1	22 mm
PCI/104-Express™	ASP-142781-02	ASP-129646-02	2	22 mm
PCI/104-Express™	ASP-142781-03	ASP-129646-03	3	22 mm

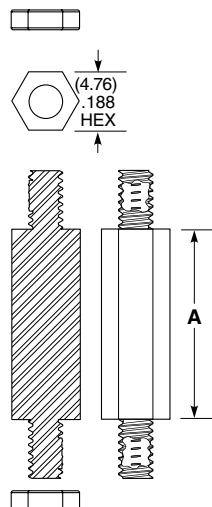
ALSO AVAILABLE

MOQ Required

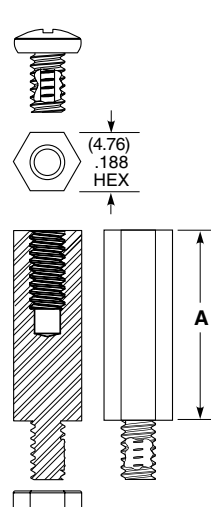
Other heights
Stainless Steel
Locking compound removed
Other materials and threading
No Hardware



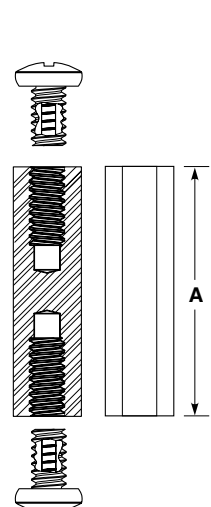
-01 LEAD STYLE



-02 LEAD STYLE

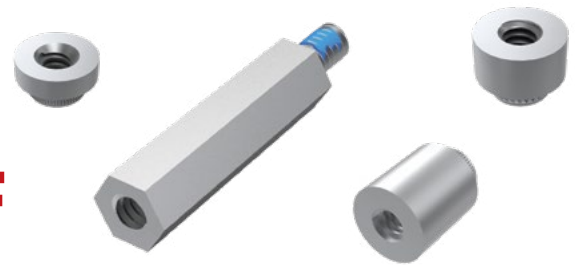


-03 LEAD STYLE



-05 LEAD STYLE

Components are to be packaged in separate bags unassembled.



Note:

Some sizes, styles and
options are non-standard,
non-returnable.