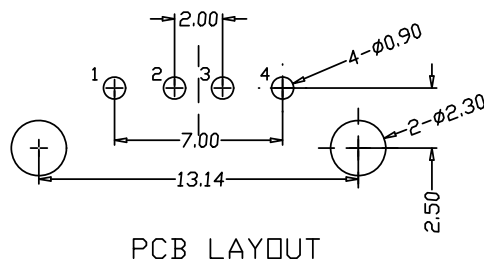
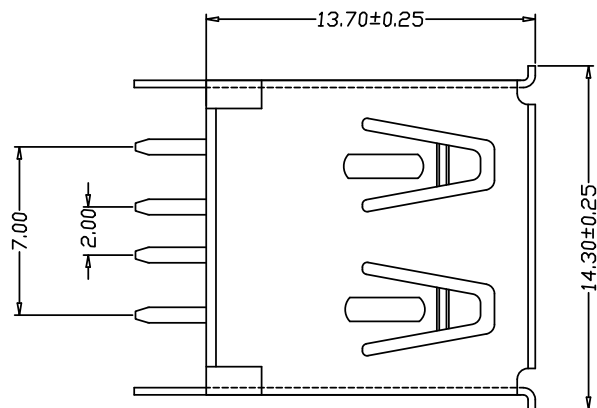


RoHS

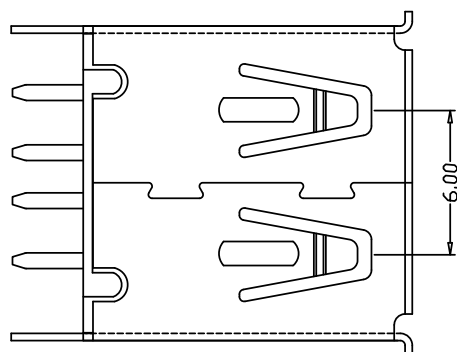
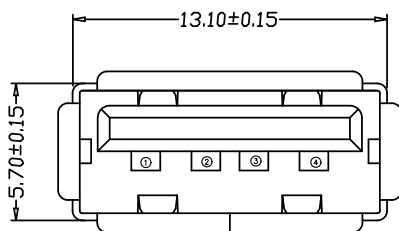
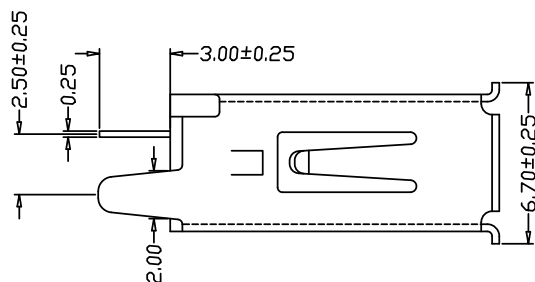
目錄
MAPX

设变内容
MODIFICATION

日期
DATE



PCB LAYOUT



电气特性:Electrical:

1. 额定电流: Current Rating
1.5A/contact terminal
2. 额定电压: Voltage Rating
30V DC
3. 接触阻抗: Contact Resistance
30 milliohms MAX
4. 耐电压: Dielectric Withstanding Voitage:
500 V AC AT Sea Level
5. 绝缘阻抗: Insulation Resistance:
1000MEGA ohms MIN

物理性能: Mechanical:

1. 插拔力: Connector Mate and Unmate Force
Mate force: 3.57kgf (MAX)
Unmate force: 1.02kgf (MIN)
 2. 端子保持力: Terminal Retention
1.0kgf (MIN)
 3. 寿命: 1500次
- 原材料: Material:

1. 塑胶: Housing: pbt bk
 2. 端子: Contact: Copper Alloy C2680
 3. 外壳: Shell: c2680
- 电镀: Finish:
1. 端子 Contact: Au G/F u" Plated on contact area
Tin50u" Plated on solder area
Nickel 50u" Plated underplating over all.
 2. 外壳 Shell: Nickel 50u" Min plating over all.

产品图

PRODUCT CHART DWG

深圳市精拓金电子有限公司

Pin NUMBER	SIGNAL NAME
1	VBUS
2	D-
3	D+
4	GND

公差一览表 TOLERANCE UNLESS OTHERWISE			
X.	±0.35	X'	±5'
.X	±0.30	.X'	±2'
.XX	±0.25	.XX'	±1'
.XXX	±0.10	.XXX'	±0.5'

单位 UNITS	MM	制图 DRAWING	L S S	产品料号 PRODUCT PART NO.
比例 SCALE	1:1	审核 CHKD	G Z F	916-252A1023Y10200
日期 DATE	2021/03/10	核准 APPD	黄国荣	产品名称 PRODUCT NO. AF13.7直脚180度有边铜壳PBT黑胶
			角法 VIEW	版本 VER A0