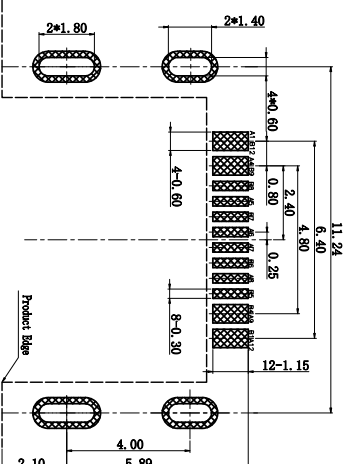
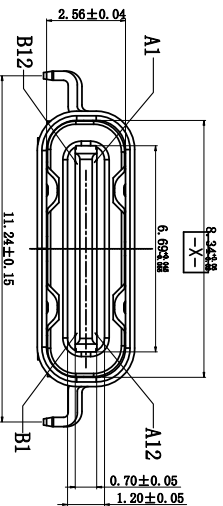
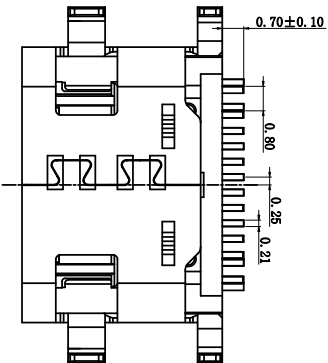
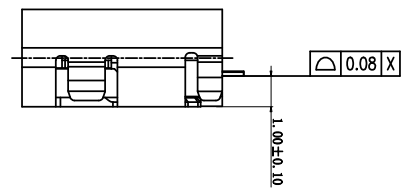
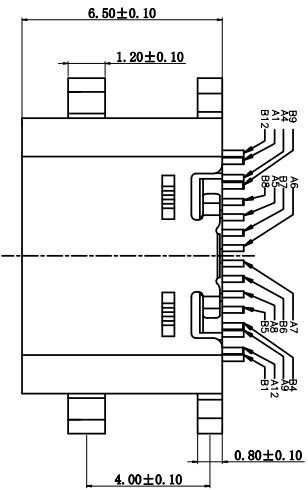
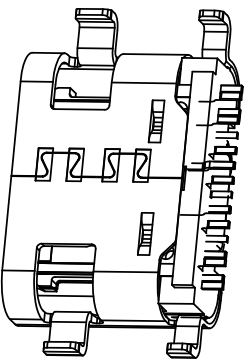
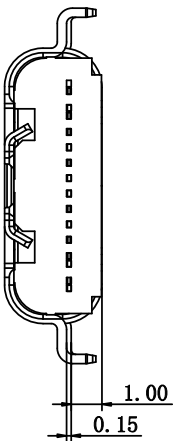


RoHS



RECOMMENDED P.C.B. LAYOUT
TOLERANCE UNSPECIFIED ±0.05mm

| | | | |
|-----|-------------|-----|-------------|
| A1 | GND | B12 | GND |
| A4 | VBUS | B9 | VBUS |
| A5 | CCI | B8 | SBUS2 |
| A6 | DP1 | B7 | DN2 |
| A7 | DN1 | B6 | DP2 |
| A8 | SBUS1 | B5 | CC2 |
| A9 | VBUS | B4 | VBUS |
| A12 | GND | B1 | GND |
| PN | SIGNAL NAME | PN | SIGNAL NAME |

| | |
|-------------------------------|-------|
| 公差一览表 | |
| TOLERANCE DIMENSION OTHERWISE | |
| X | ±0.35 |
| X | ±0.25 |
| XX | ±0.20 |
| XXX | ±0.05 |
| X | ±5° |
| X | ±2° |
| XX | ±1° |
| XXX | ±0.5° |

| | | | |
|-------------------|--------------------|---|------------------------------------|
| 产品图 | | 深圳市精拓金电子有限公司 | |
| PRODUCT CHART DWG | | Shenzhen Jing Tuo Jin Electronics Co., Ltd. | |
| 单位 | MM | 制图 | L-S-S |
| 比例 | 1:1 | 审核 | 郭治富 |
| 日期 | 2021-03-10 | 核准 | 黄国荣 |
| DATE | | APPD | |
| 制图料号 | 918-418K2024S40022 | 产品名称 | TYPE-C3.1 16PIN 沉板 1.0母座单排30V56.5L |
| PRODUCT PART NO. | | PRODUCT NO. | |
| 角法 | | 版本 | A0 |
| VIEW | | VER | |

| | | | |
|------|--------------|-----|------|
| MAPX | MODIFICATION | DRW | DATE |
| | | | |
| | | | |

- 备注:
- 1.材料: LCP+30%G.F
 - 1.1胶芯: C2680-H, T=0.15mm; 模底, 镀金1U"
 - 1.2端子: C2680-H, T=0.15mm; 模底, 镀金1U"
 - 1.3外壳: SUS201-1/2H, T=0.30mm; 整体镀镍
 - 1.4中夹片: SUS301-1/2H, T=0.15mm

- 2.主要特性:
- 2.1额定电流: 3A
 - 2.2接触阻抗: 40mΩ MAX
 - 2.3绝缘阻抗: 100MΩ MIN 250V DC
 - 2.4耐压测试: 100V AC
 - 2.5沾锡性: 温度250±5℃, 时间5±0.5s
 - 2.6整体插入力: 2.0kgf MAX
 - 2.7耐久前整体拔出力: 0.8kgf MIN
 - 2.8使用寿命: 10000次
 - 2.8工作温度: -30℃~+80℃

您正在使用 ZWCAD2022 个人版, 不得用于商业用途, 详情请咨询4007-182-5888