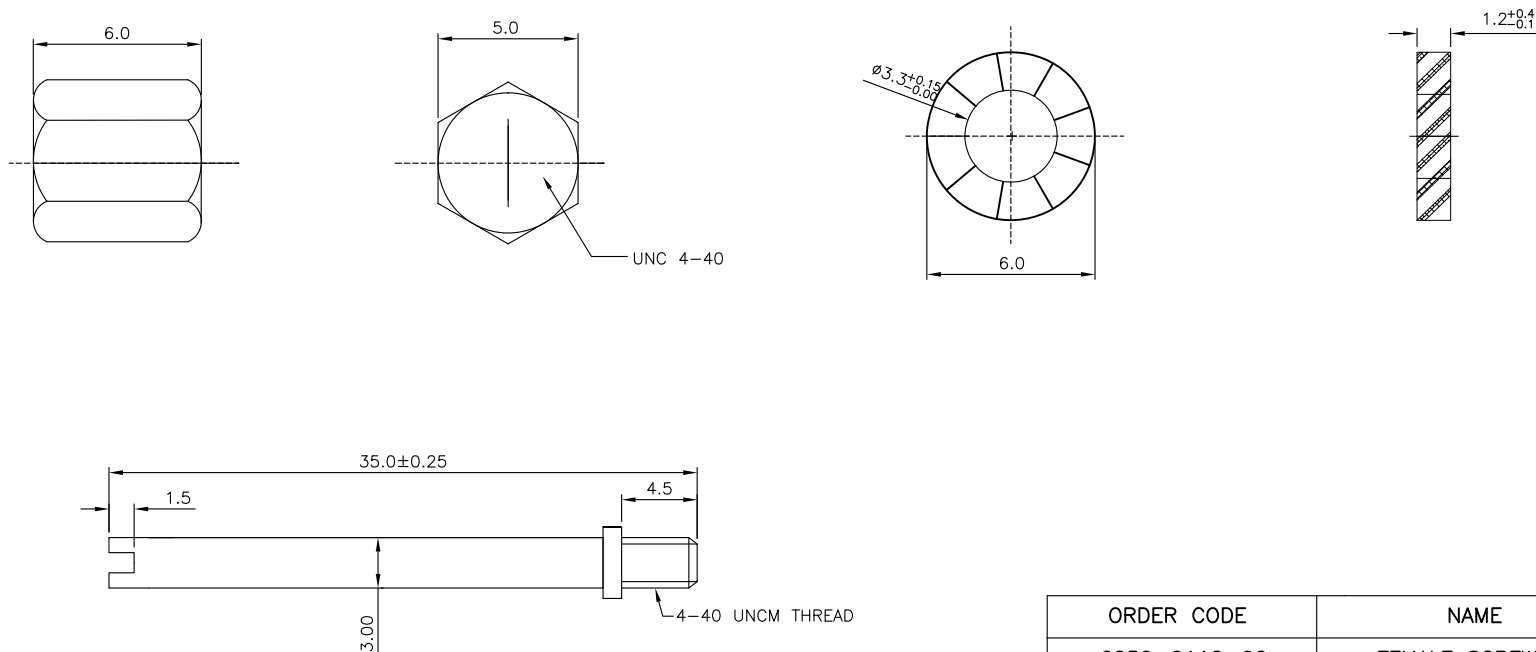


THIS IS A C.A.D. GENERATED DRAWING
DO NOT MAKE MANUAL REVISIONS TO MASTER.



* UNLESS OTHERWISE SPECIFIED TOLERANCES
ON DECIMAL IS: ANGLE $\pm 1^\circ$
UNIT: MM .X ± 0.20
.XX ± 0.10

FEMALE SCREW KIT:
(2)SLOTTED JACKSCREWS
(2)HEX EXTENDER
(2)WASHER



| ORDER CODE | NAME |
|--------------|------------------|
| 6250-0112-02 | FEMALE SCREW KIT |

JACKSCREWS:
HEX EXTENDER:
WASHER:

STEEL:ZN PLATED
STEEL:ZN PLATED
STEEL:ZN PLATED



THIS SERIES FULLY CONFORMS TO THE
EUROPEAN UNION DIRECTIVES 2002/95/EC
AND 2002/96/EC FOR RoHS COMPLIANCY.



THESE DRAWINGS AND SPECIFICATIONS ARE THE
PROPERTY OF MH CONNECTORS AND SHALL NOT BE
REPRODUCED, COPIED OR USED AS THE BASIS FOR
THE MANUFACTURE OR SALE OF APPARATUS WITHOUT
WRITTEN PERMISSION.

**MH CONNECTORS ,
DIVISION OF EDAC**

| | | | |
|----------------------------|-----------------|------------------|-------------|
| DRAWN Johnny | | DATE 03-22-18 | |
| APPROVED Victor Lin | | DATE 03-22-18 | |
| SCALE | SHEET 1 OF 1 | OF | REV: 1.0 |
| DRAWING No 6250-0112-02 | | | |