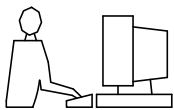


THIS IS A C.A.D. GENERATED DRAWING  
DO NOT MAKE MANUAL REVISIONS TO MASTER.

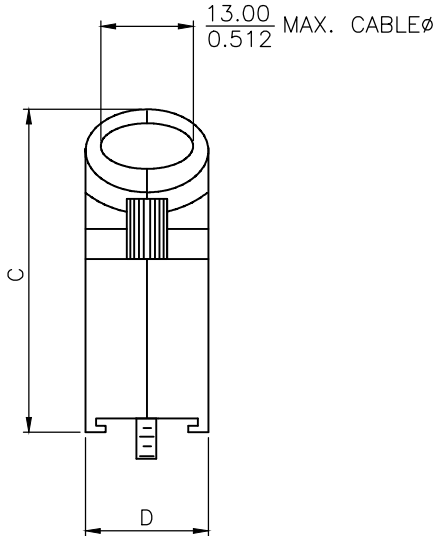
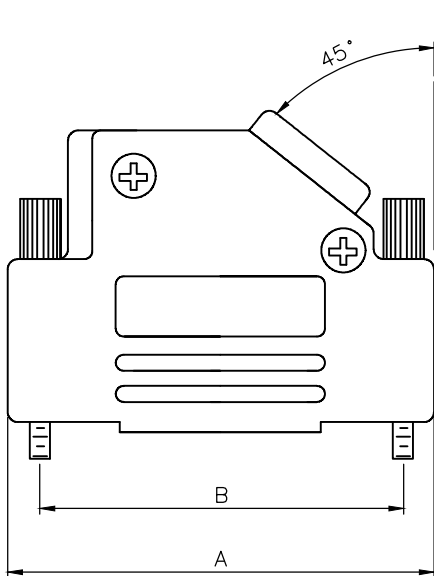


\* UNLESS OTHERWISE SPECIFIED TOLERANCES  
ON DECIMAL IS:

BACKSHELL KIT INCLUDES:

- (2)BACKSHELL HALVES
- (2)4-40 THUMBSCREWS
- (2)HOUSING SCREWS & (2)NUTS
- (1)SET OF COMPRESSION INSERTS-VARIOUS SIZES  
DIAMETERS:4mm(.157"),5mm(.197"),7mm(.276"),9mm(.351")

NOTE: 9 POSITION HAS ONLY 1 THUMBSCREW  
(OPPOSITE CABLE ENTRY)



DIMENSIONS(mm/in)				
SIZE	A $+1.70^{(+.067)}_{-.50^{(-.02)}}$	B $+2.25^{(+.087)}_{-.010}$	C $+2.40^{(+.094)}_{-.50^{(-.02)}}$	D $+2.85^{(+.112)}_{-.30^{(-.012)}}$
9	31.00	24.99	36.30	15.00
	1.220	0.984	1.429	0.591
15	39.50	33.32	40.30	15.00
	1.555	1.312	1.587	0.591
25	53.20	47.04	40.30	15.00
	2.094	1.852	1.587	0.591
37	69.70	63.50	40.30	15.00
	2.744	2.500	1.587	0.591

ORDERING INFORMATION:

SIZE	P/N - KITTED	PRODUCT CODE
9-WAY	6560-0146-11	MHD45PK9-K
15-WAY	6560-0146-12	MHD45PK15-K
25-WAY	6560-0146-13	MHD45PK25-K
37-WAY	6560-0146-14	MHD45PK37-K

MHD45PK9-DB9P-K=MHD45PK9-K + MHDB9SP  
MHD45PK15-DB15P-K=MHD45PK15-K + MHDB15SP  
MHD45PK25-DB25P-K=MHD45PK25-K + MHDB25SP

PLASTIC: ABS POLYLAC-UL RECOGNIZED  
NICKEL PLATED  
4-40 THUMBSCREWS: STEEL-Zn PLATED  
HOOD SCREWS: STEEL-Zn PLATED  
COMPRESSION INSERTS: ABS UL RECOGNIZED  
NUTS: STEEL-Zn PLATED  
OPERATING TEMP: -55°C TO+110°C



THIS SERIES FULLY CONFORMS TO THE  
EUROPEAN UNION DIRECTIVES 2002/95/EC  
AND 2002/96/EC FOR RoHS COMPLIANCY.

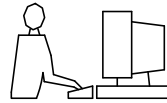


THESE DRAWINGS AND SPECIFICATIONS ARE THE  
PROPERTY OF MH CONNECTORS AND SHALL NOT BE  
REPRODUCED, COPIED OR USED AS THE BASIS FOR  
THE MANUFACTURE OR SALE OF APPARATUS WITHOUT  
WRITTEN PERMISSION.

DRAWN Johnny		DATE 11-24-15	
APPROVED Victor Lin		DATE 11-24-15	
SCALE 1 : 1	SHEET OF 1 OF 1		REV: 7.0
DRAWING No MHD45PK SERIES			

MH CONNECTORS ,  
DIVISION OF EDAC

THIS IS A C.A.D. GENERATED DRAWING  
DO NOT MAKE MANUAL REVISIONS TO MASTER.



\* UNLESS OTHERWISE SPECIFIED TOLERANCES  
ON DECIMAL IS: X.X ±0.15  
X.XX ±0.05  
UNIT: MM ANGLE ±1°

ISSUE NUMBER

Original	①
Update drawing Johnny 2014/01/15	②
The tin plating on the back shell was updated to nickel plating Iven Ou 2022/08/31	③
Update the dimension line Position for dimension marking Iven Ou 2023/05/02	④
Current is updated from 5 AMP to 3 AMP. Iven Ou 2024/01/16	⑤

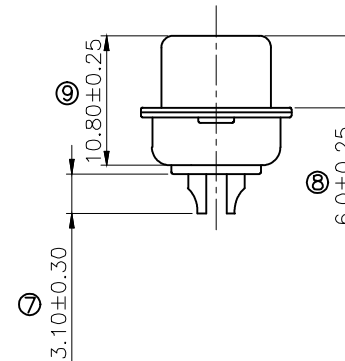
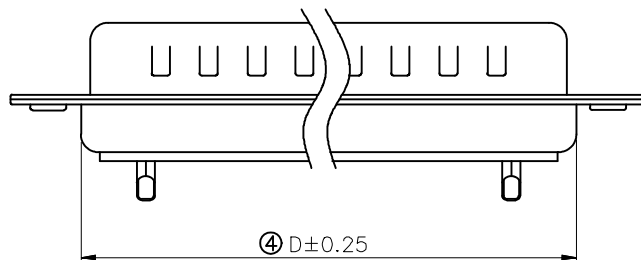
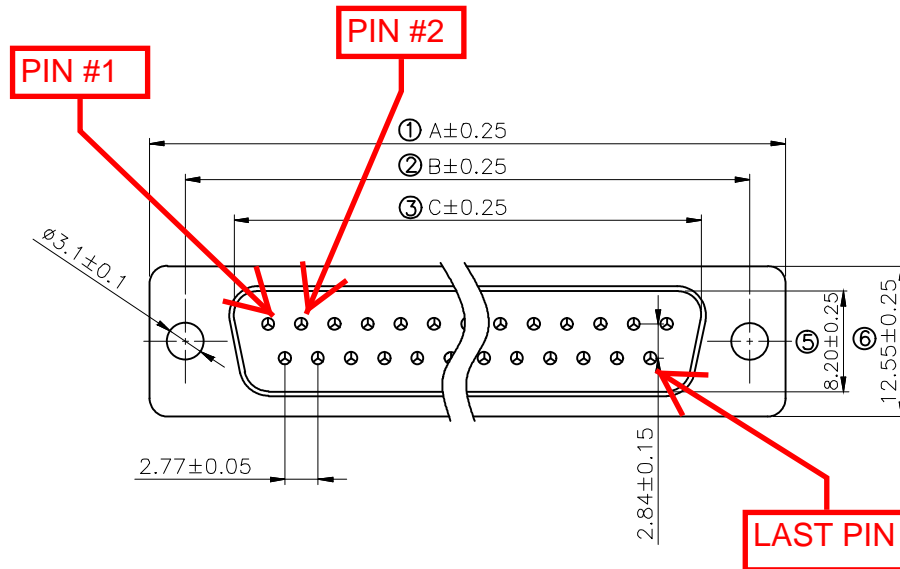
Remark:

1.SPECIFICATION:

Rated voltage:250V  
Rates current:3AMP  
Contact resistance:20MΩ MAX  
Insulation resistance:1000MΩ MIN.at 500V DC  
Withstand voltage:500V Per mintute  
Temperature range:-55 -105℃

2.MATERIAL:

Plastic:PBT+30% G.F (UL94V-0) BLACK  
Terminal:Brass ,Tin-gold plated  
Spcc shell:Spcc front shell is nickel plated back shell is nickel plated



PN	PIN	A	B	C	D
MHDB9SP	09	30.81	24.99	16.92	19.28
MHDB15SP	15	39.25	33.32	25.25	27.75
MHDB25SP	25	53.03	47.04	38.96	41.30
MHDB37SP	37	69.50	63.50	55.42	57.40

THESE DRAWINGS AND SPECIFICATIONS ARE THE  
PROPERTY OF MH CONNECTORS AND SHALL NOT BE  
REPRODUCED, COPIED OR USED AS THE BASIS FOR  
THE MANUFACTURE OR SALE OF APPARATUS WITHOUT  
WRITTEN PERMISSION.

DRAWN Johnny		DATE 2012/07/16	
APPROVED		DATE	
SCALE 1 : 1	SHEET 1	OF 1	REV: 5.0
DRAWING No MHDB SP			



THIS SERIES FULLY CONFORMS TO THE  
EUROPEAN UNION DIRECTIVES 2015/863/EU  
AND 2011/65/EU FOR RoHS COMPLIANCY.



MH CONNECTORS ,  
DIVISION OF EDAC