

SPECIFICATION FOR APPROVAL

承 認 書

CUSTOMER

客戶名稱：

NUMBER

編號： L050-2

DESCRIPTION

品 名：SMD POWER INDUCTORS

QUANTITY

數量：20PCS

PART NO.

型 號： CR6045 - 391M

DATE

日期： 2023-12-11

CUSTOMER PART NO.

客戶料號：

NOTE

注解：

APPROVAL SIGNATURE

客戶承認簽章

Approved By 核 准	Checked By 审 查	Drawn By 制 作
李庆辉	苏高峰	劳水花

深圳市柯爱亚电子有限公司

Shenzhen Ceaiya Electronics Co., Ltd.

深圳地址：深圳市龙华区高新技术开发区捷顺科技中心 B706

东莞地址：东莞市清溪镇力合紫荆智造中心 10 栋一单元

Http://www.szceaiya.com Tel: 0769-89333213



SPECIFICATIONS

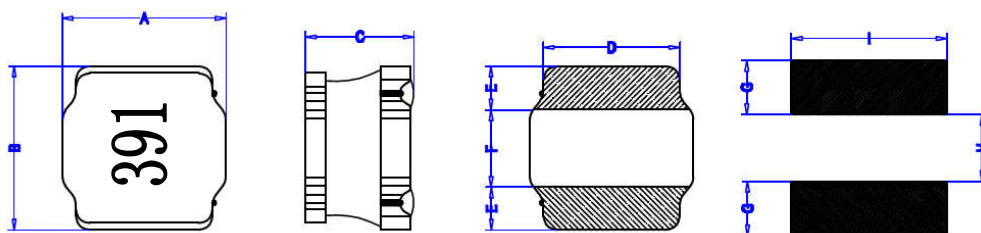
TYPE:
CR6045 – 391M

1. Scope

This specification apply for CR6045 of power inductors

2. Appearance

2-1.Dimensions(mm)

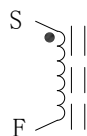


A	6.0 ± 0.3 mm
B	6.0 ± 0.3 mm
C	4.0 ± 0.5 mm
D	4.9±0.3 mm
E	1.65±0.3 mm
F	2.7±0.3 mm
G	1.7 mm
H	2.8 mm
I	5.7 mm

* Dimension without tolerance is approx.

3. Coils Specification

3-1. Connection (Bottom View)



“S” is winding start

3-2. Turns and Wire

Terminal	S-F
Turns	97.5 Ts
Wire	0.125mm G1 P180

* Winding Turns are approx.



Note :	Spec. No. L050-2 2/6
--------	-----------------------------------

SPECIFICATIONS

TYPE:
CR6045 - 391M

3-3. Electronical characteristics

Item	Specifications	Measuring Conditions	Measuring Instrument
Inductance	390μH ± 20% Within	100KHz/0.25V	CH1062/HIOKI3532-50
D.C.R	1.75Ω ± 30%	25℃	HIOKI 3540
I sat ※	0.45A Max.	100KHz/0.25V	Microtest 6377&6220
I rise ※	0.42A Max	25℃	Microtest 6377&6220

※ This indicates the value of current when the inductance is 30% lower than its initial value at D.C superposition or D.C current when temperature rise ΔT=40℃

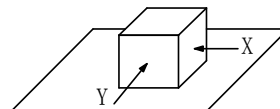
4. General Characteristics

4-1. Storage Temperature range : -40℃ ~ +100℃

4-2. Operating temperature range: -40℃ ~ +125℃ (Including coil's self temperature rise)

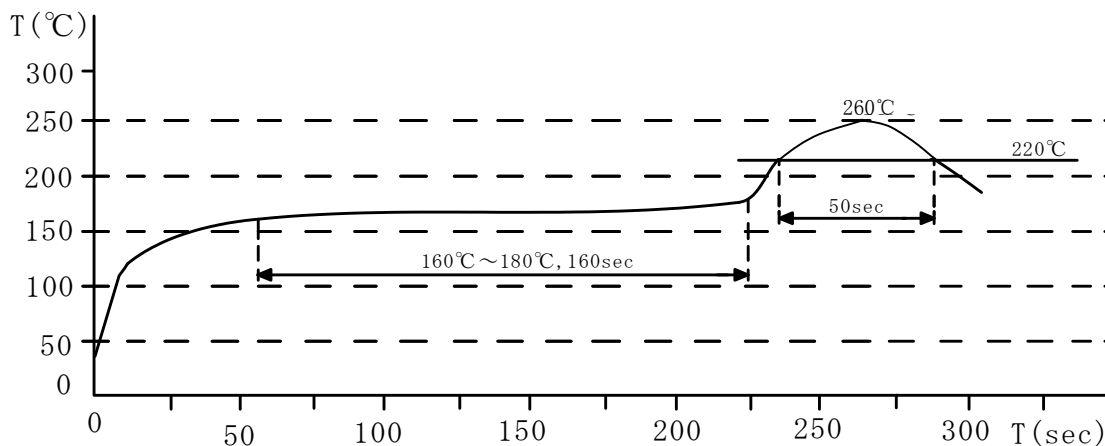
4-3. External appearance : No external defects can be found in the visual inspection.

4-4. Electrode strength : No electrode detachment should be found when the device is pushed in two directions of X and Y with the force of 10.0N for 10±2 seconds after soldering between copper plate and the electrodes.
(Refer to figure at right)



4-5. Vibration test : Inductance deviation is within ±10.0% after 1 hour sweeping vibration in each three directions, namely, forward and backward, up and down, right and left. The frequency is 10~55~10Hz and the amplitude of 1 minute cycle is 1.5mm PP.

4-6. Recommended reflow condition :



Note :	Spec. No. L050-2 3/6
--------	-----------------------------------

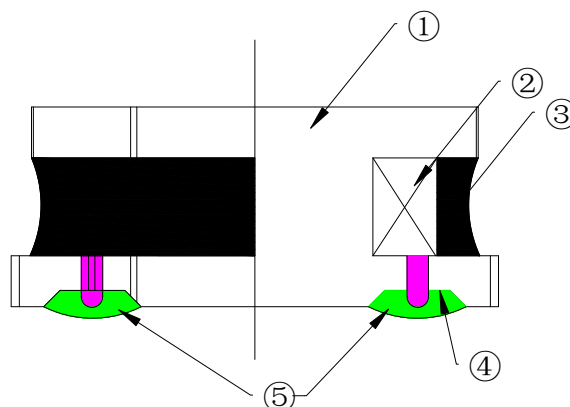
SPECIFICATIONS

TYPE:

CR6045 - 391M

4-7.Humidity test : Inductance deviation is within $\pm 5.0\%$ after 96 ± 4 hours test under the condition of relative humidity of $90 \sim 95\%$ and temperature of $60 \pm 2^\circ\text{C}$, and 1 hour storage under room ambient conditions after the device is wiped with dry cloth.

5. Construction and materials



No.	Part name	Material	Ceaiya P/N
①	Drum Core	Ni-Zn Ferrite Core	CY/TW
②	Wire	Polyurethane enameled copper wire	YLSL
③	Adhesive	Epoxy Resin Magnetic Powder	CH/DZ
④	Plating Electrodes	Plating: Ag 3-7 μm Ni 1-3 μm Sn 3-7 μm	
⑤	Outer Electrodes	Top surface solder coating Sn99%、Ag0.3%、Cu0.7%	YX

Note :

Spec. No.

L050-2

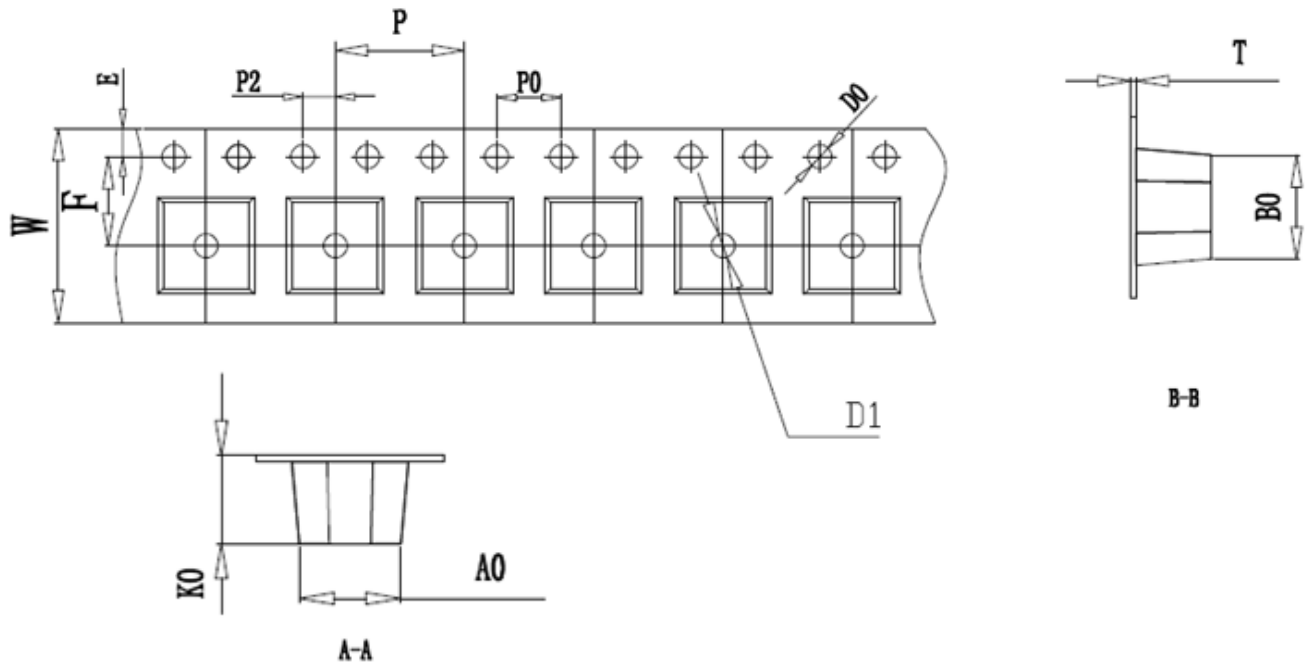
4/6

SPECIFICATIONS

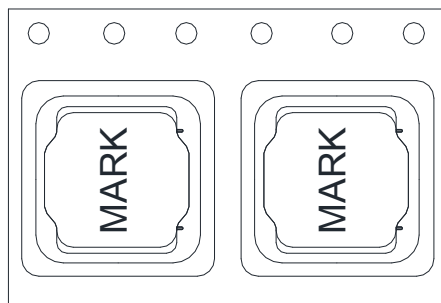
TYPE:

CR6045 - 391M

6. TAPE DIMENSIONS:



ITEM	W	A0	B0	K0	P1	F	E	D0	P0	P2	T
DIM	12.00	6.3	6.3	4.7	8.00	5.50	1.75	1.50	4.00	2.00	0.40
TOLE	±0.3	±0.1	±0.1	±0.1	±0.1	±0.1	±0.1	+0.1	±0.1	±0.1	±0.05



Note :

Spec. No.

L050-2

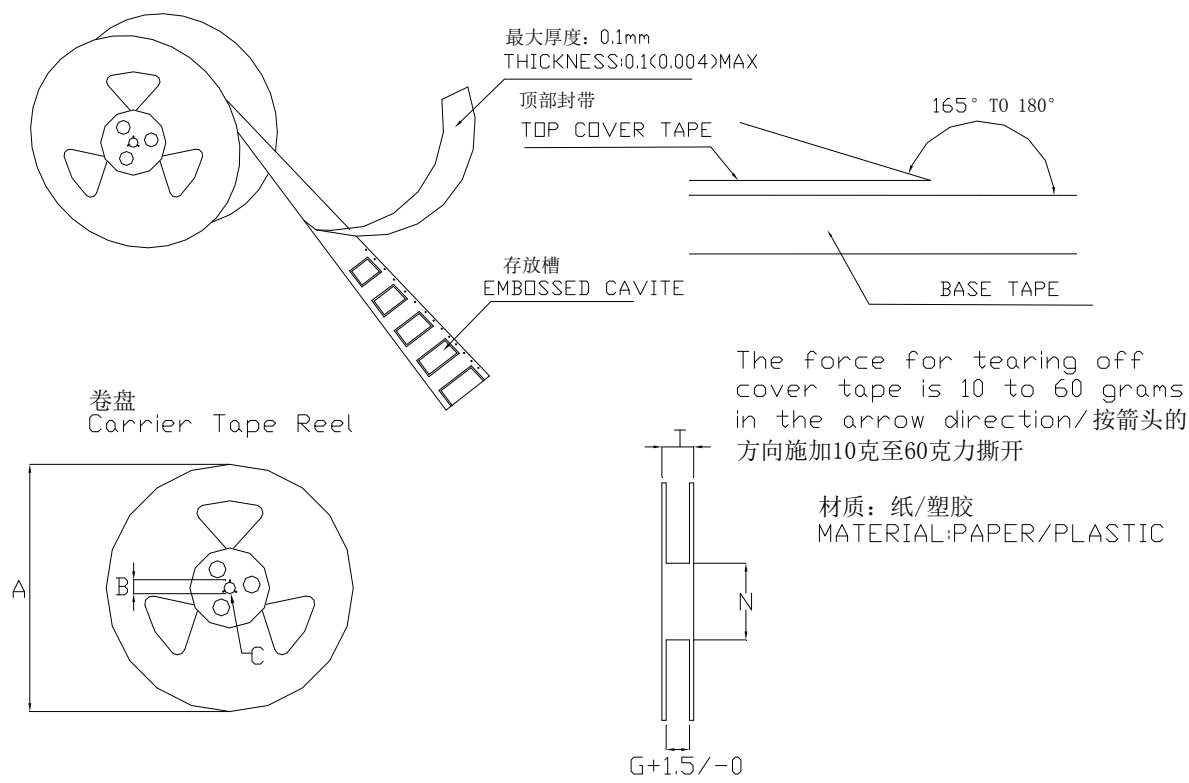
5/6

SPECIFICATIONS

TYPE:

CR6045 - 391M

7. TAPE REEL DIMENSIONS:



单位：毫米

Type	A	B	C	G	N	T
12mm	330	21±0.8	13±0.4	12.4	100	16.4

PACKAGING QUANTITY :
1500 PCS /REEL

Note :	Spec. No. L050-2 6/6
--------	------------------------------------