

SPECIFICATION FOR APPROVAL

承 認 書

CUSTOMER

客戶名稱：

NUMBER

編號：L058-1

DESCRIPTION

品 名：SMD POWER INDUCTORS

QUANTITY

數量：50PCS

PART NO.

型 號：CR8040-3R6N

DATE

日期：2021-10-28

CUSTOMER PART NO.

客戶料號：

NOTE

注解：

APPROVAL SIGNATURE

客戶承認簽章

APPROVED BY 核 准	Checked By 审 查	DRAWN BY 制 作
李 庆 辉	刘 志 坚	劳 水 花

深圳市柯爱亚电子有限公司

Shenzhen Ceaiya Electronics Co., Ltd.

深圳地址：深圳市龙华区观澜街道新澜社区观光路 1301-74 号银星智界 4 号楼（综合楼）716

东莞地址：广东省东莞清溪镇青滨东路 105 号力合紫荆智能制造中心 10 栋一单元

[Http://www.szceaiya.com](http://www.szceaiya.com)

Tel: 0769-89135516

Fax: 0769-89135519



SPECIFICATIONS

TYPE:

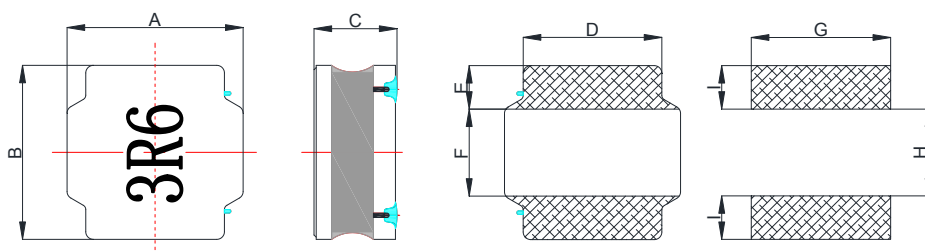
CR8040 – 3R6N

1. Scope

This specification apply for CR8040 of power inductors

2. Appearance

2-1.Dimensions(mm)

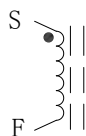


A	8.0mm ± 0.3
B	8.0mm ± 0.3
C	4.2mmMax
D	6.3±0.3mm
E	2.0±0.3mm
F	4.0±0.3mm
G	7.5mm
H	3.8mm
I	2.2mm

* Dimension without tolerance is approx.

3. Coils Specification

3-1. Connection (Bottom View)



“S” is winding start

3-2. Turns and Wire

Terminal	S-F
Turns	7.5 Ts
Wire	0.4mm G1 P180

* Winding Turns are approx.

LEAD-FREE

RoHS

Compliance

Note :

Spec. No.

L058-1

2/6

SPECIFICATIONS

TYPE:

CR8040 - 3R6N

3-3. Electronical characteristics

Item	Specifications	Measuring Conditions	Measuring Instrument
Inductance	$3.6\mu\text{H} \pm 30\%$ Within	100KHz/0.25V	CH1062
D.C.R	$17\text{m}\Omega \pm 30\%$	25°C	HIOKI 3540
Isat ※1	6.5A	100KHz/0.25V	CH1062&Chroma1320
Irms ※2	4.2A	25°C	6377&6220

※ This indicates the value of current when the inductance is 30% lower than its initial value at D.C superposition or D.C current when temperature rise $\Delta T=40^\circ\text{C}$ whichever is lower .($T_a=20^\circ\text{C}$)

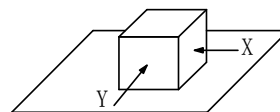
4. General Characteristics

4-1. Storage Temperature range : $-40^\circ\text{C} \sim +105^\circ\text{C}$

4-2. Operating temperature range: $-40^\circ\text{C} \sim +105^\circ\text{C}$ (Including coil's self temperature rise)

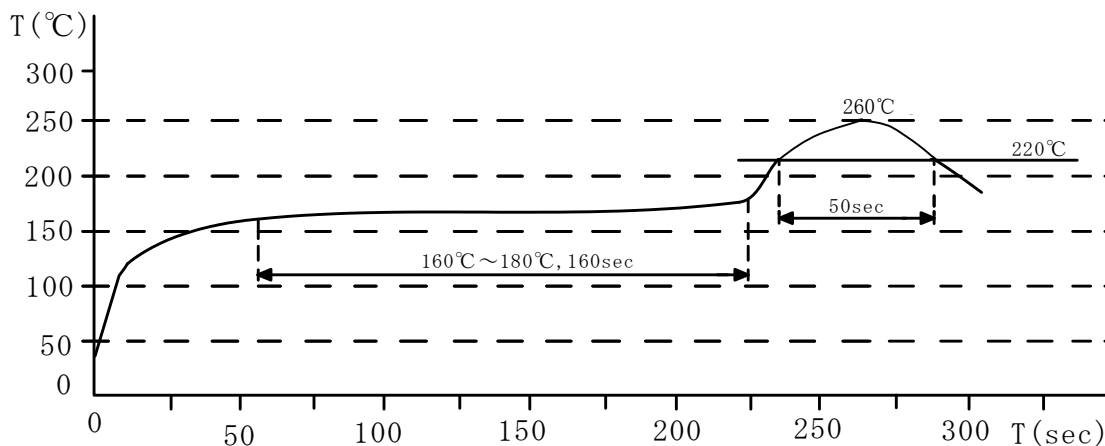
4-3. External appearance : No external defects can be found in the visual inspection.

4-4. Electrode strength : No electrode detachment should be found when the device is pushed in two directions of X and Y with the force of 10.0N for 10 ± 2 seconds after soldering between copper plate and the electrodes.
(Refer to figure at right)



4-5. Vibration test : Inductance deviation is within $\pm 10\%$ after 1 hour sweeping vibration in each three directions, namely, forward and backward, up and down, right and left. The frequency is $10 \sim 55 \sim 10\text{Hz}$ and the amplitude of 1 minute cycle is 1.5mm PP.

4-6. Recommended reflow condition :



Note :

Spec. No.

L058-1

3/6

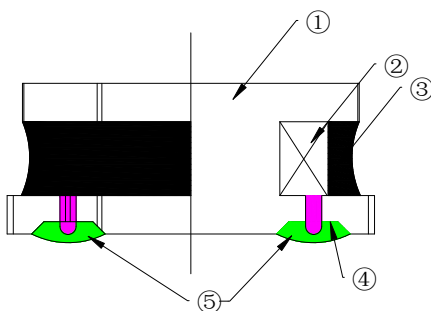
SPECIFICATIONS

TYPE:

CR8040 – 3R6N

4-7.Humidity test : Inductance deviation is within $\pm 5.0\%$ after 96 ± 4 hours test under the condition of relative humidity of $90 \sim 95\%$ and temperature of $60 \pm 2^\circ\text{C}$, and 1 hour storage under room ambient conditions after the device is wiped with dry cloth.

5. Construction and materials



No.	Part name	Material	Manufacturer
①	Drum Core	Ni-Zn Ferrite Core	FY/CY
②	Wire	Polyurethane enameled copper wire	YLSL
③	Adhesive	Epoxy Resin Magnetic Powder	DZ/JH
④	Plating Electrodes	Plating: Ag 10-20 μm Ni 1-3 μm Sn 3-7 μm	
⑤	Outer Electrodes	Top surface solder coating Sn99%、 Ag0.3%、Cu0.7%	YX

Note :

Spec. No.

L058-1

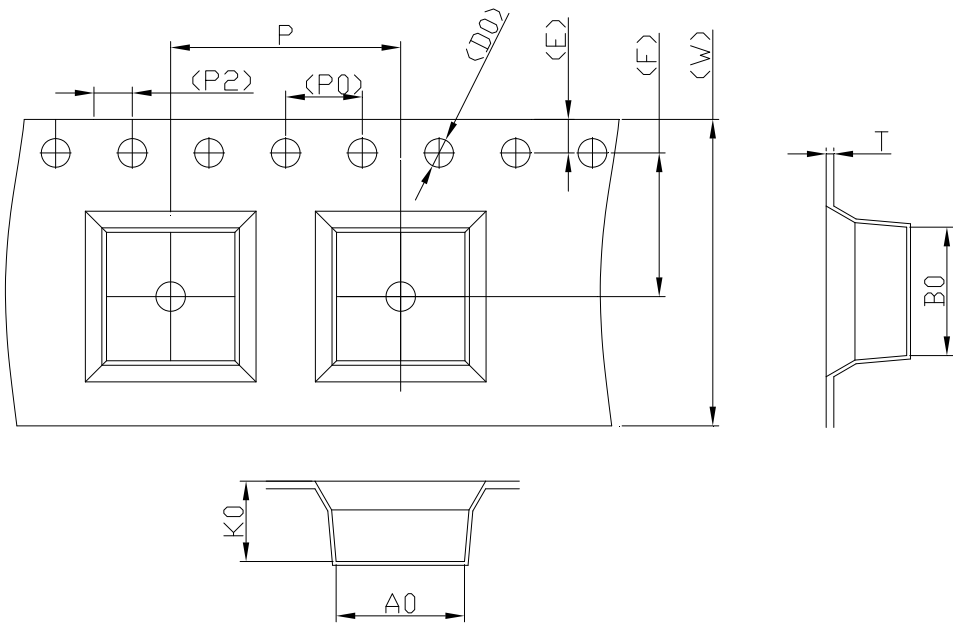
4/6

SPECIFICATIONS

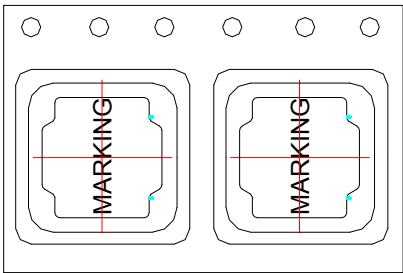
TYPE:

CR8040 - 3R6N

6. TAPE DIMENSIONS:



ITEM	W	A0	B0	K0	P	F	E	D0	D1	P0	P2	T
DIM	16.00	8.40	8.40	4.2	12.00	7.50	1.75	1.50	1.50	4.00	2.00	0.35
TOLE	±0.3	±0.1	±0.1	±0.1	±0.1	±0.1	±0.1	+0.1	+0.1	±0.1	±0.1	±0.05



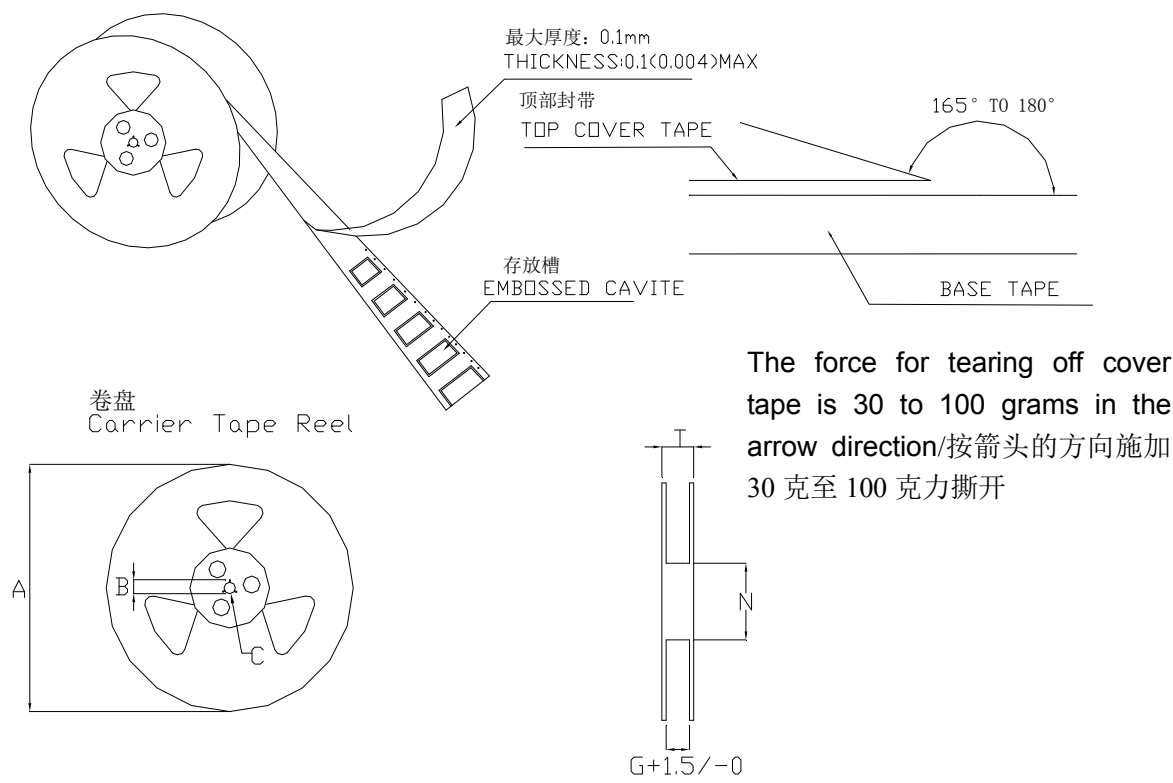
Note :	Spec. No. L058-1 5/6
--------	----------------------------

SPECIFICATIONS

TYPE:

CR8040 - 3R6N

7. TAPE REEL DIMENSIONS:



单位：毫米

Type	A	B	C	G	N	T
16mm	330	21±0.8	13±0.4	16.4	100	20.4

8. PACKAGE SPECIFICATION :

1000PCS/Reel 3000PCS/Inner Box 9000PCS/Outer Box

Note :	Spec. No. L058-1 6/6
--------	----------------------------

