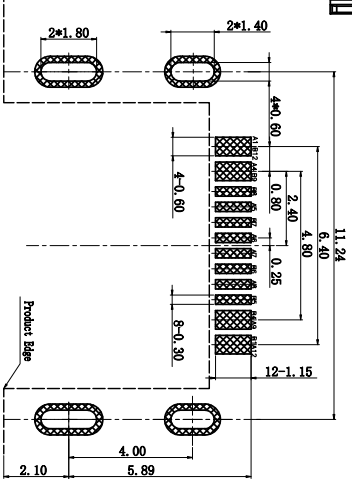
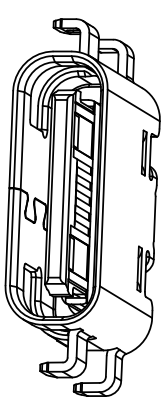
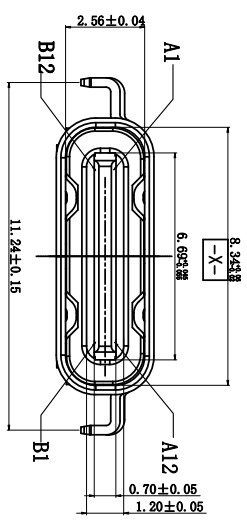
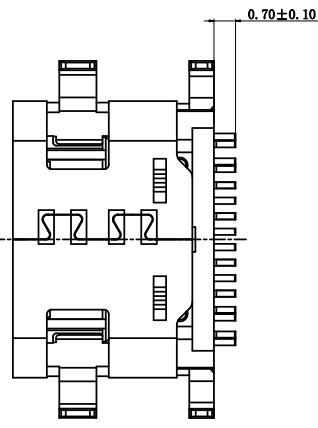
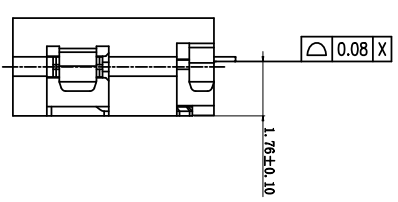
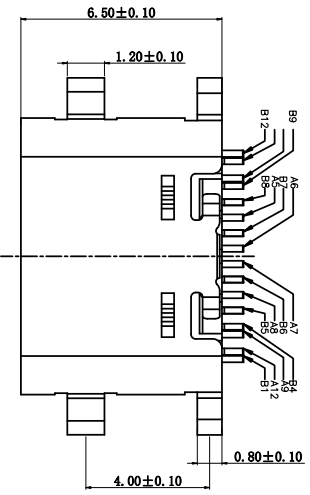
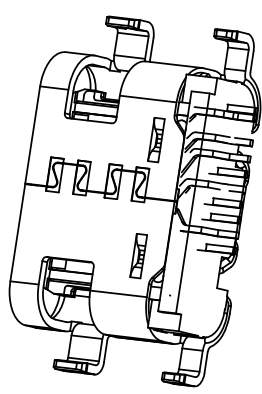
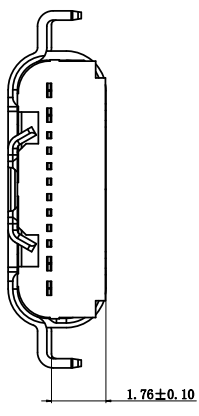


RoHS



- 备注:
- 1.材质: LCP+50%G.F
 - 1.2端子: C2680-H, T=0.15mm; 镀层: 镀金1U"
 - 1.3外壳: SIS201-1/2H, T=0.30mm; 整体镀镍
- 2.主要特性:
- 2.1额定电流: 3A
 - 2.2接触阻抗: 40mΩ MAX
 - 2.3绝缘阻抗: 100MΩ MIN 250V DC
 - 2.4耐压测试: 100V AC
 - 2.5沾锡性: 温度25±5℃, 时间5±0.5s
 - 2.6整体插入力: 0.8kgf MAX
 - 2.6整体拔出力: 0.8kgf MIN
 - 2.7使用寿命: 10000次
 - 2.8工作温度: -30℃~+80℃

MAPX	MODIFICATION	DRW	DATE

A1	GND	B12	GND
A4	VERUS	B9	VERUS
A5	CC1	B8	SBU2
A6	DPI	B7	DP2
A7	DP1	B6	CC2
A8	SBU1	B5	VERUS
A9	VERUS	B4	VERUS
A12	GND	B1	GND
	SIGNAL NAME		SIGNAL NAME

产品图
PRODUCT CHART DWG

深圳市精拓金电子有限公司
Shenzhen Jing Tuo Jin Electronics Co., Ltd.

公差一览表		单位	MM	制图	J-S-S	产品料号	918-418R2023S40026
TOLERANCE UNLESS OTHERWISE		UNITS		DRAWING		PRODUCT PART NO.	
X	±0.35	X	±5°	审核	G-Z-F	产品名称	USB TYPE C 16P沉板1.76mm 3A
X	±0.25	X	±2°	CHKD		PRODUCT NO.	
.XX	±0.20	.XX	±1°	核准	黄国荣	角法	
.XXX	±0.05	.XXX	±0.5°	APPD		版本	
						VER	A0

正在使用 ZWCAD2022 个人版, 不得用于商业用途, 详情请咨询4007-182-5884