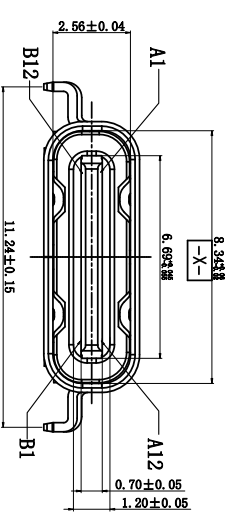
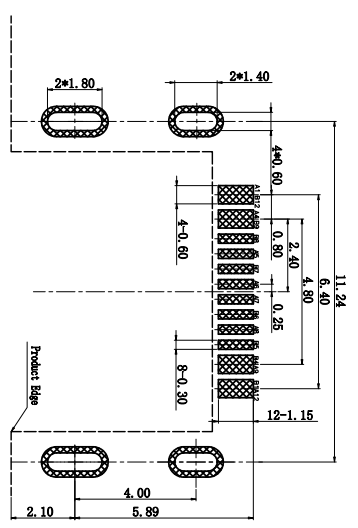
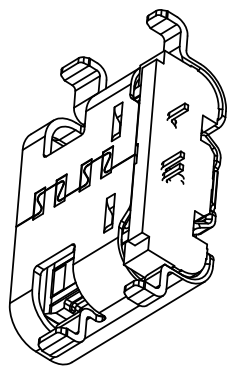
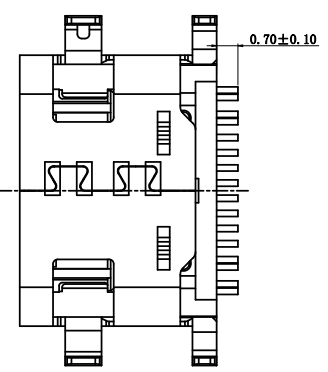
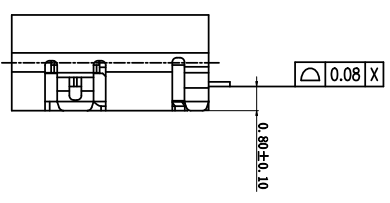
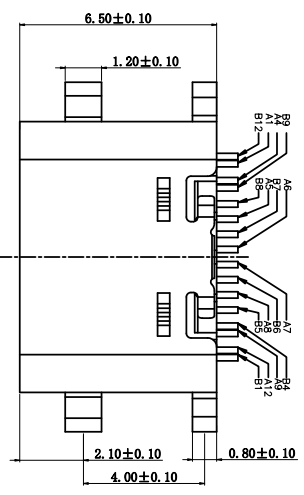
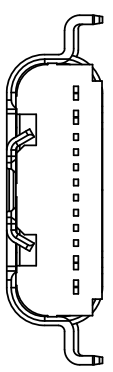


1 ROHS



MAPX	MODIFICATION	DRW	DATE

- 备注:
- 1.材质: LCP+30%G.F
  - 1.2端子: C2680-H, T=0.15mm; 鍍底, 鍍金1U"
  - 1.3外壳: S1S201-1/2H, T=0.30mm; 整体鍍镍
  - 1.4中夹片: S1S301-1/2H, T=0.15mm

- 2.主要特性:
  - 2.1额定电流: 3A
  - 2.2接触阻抗: 40mΩ MAX
  - 2.3绝缘阻抗: 100MΩ MIN 250V DC
  - 2.4耐压测试: 100V AC
  - 2.5沾锡性: 温度25±5℃, 时间5±0.5s
  - 2.6整体插入力: 2.0kgf MAX
  - 2.7使用寿命: 10000次
  - 2.8工作温度: -30℃~+80℃

A1	GND	B12	GND
A4	VBUS	B9	VBUS
A5	CC1	B8	SRU2
A6	DP1	B7	DN2
A7	DN1	B6	DP2
A8	SRU1	B5	CC2
A9	VBUS	B4	VBUS
A12	GND	B1	GND
PN	SIGNAL NAME	PN	SIGNAL NAME

产品图

PRODUCT CHART DWG

公差一览表

TOLERANCE UNLESS OTHERWISE

X	±0.35	X	±5.°
.XX	±0.20	.XX	±2.°
.XXX	±0.05	.XXX	±1.°

深圳市精拓金电子有限公司

Shenzhen Jing Tuo Jin Electronics Co., Ltd.

单位	MM	制图	L-S-S
比例	1:1	审核	郭治富
日期	2021-03-10	核准	黄国荣
DATE		APPD	
制图料号	918-418K2024S40019	产品名称	TYPE-C3.1 16P SMT板(0.8mm)带焊脚 S1C2 隔胶
SCALE		角法	版本
DATE		VIEW	VER

您正在使用ZWCAD 2022个人版, 不得用于商业用途, 详情请咨询4007-182-588。