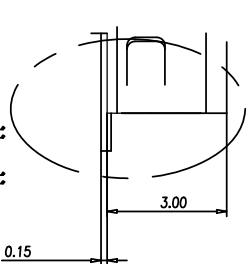
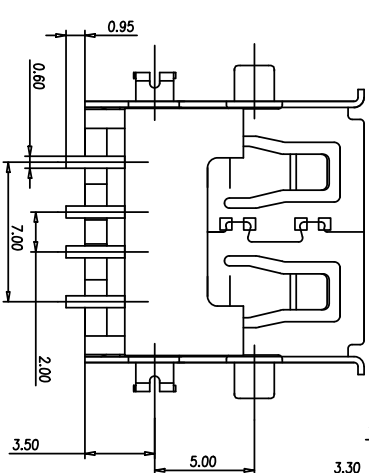
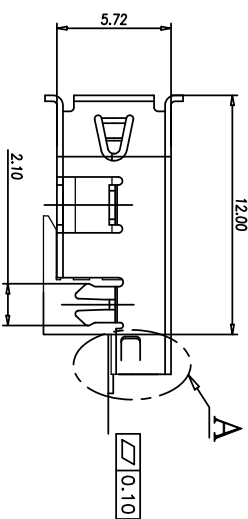
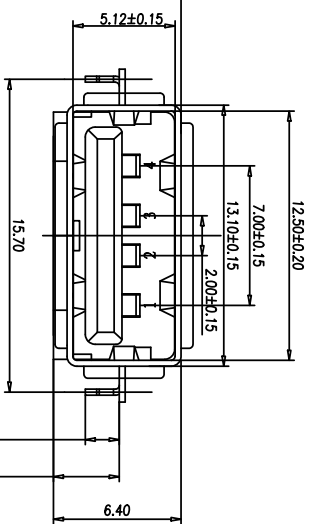
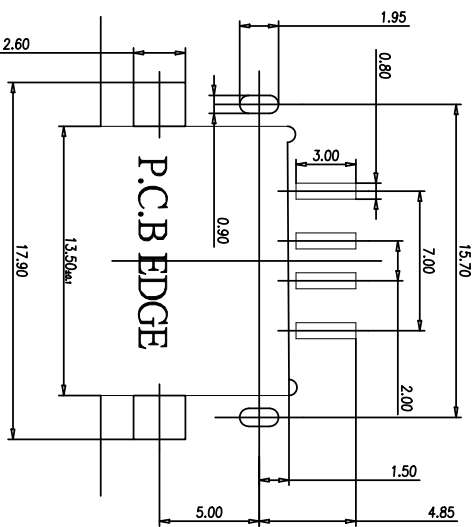
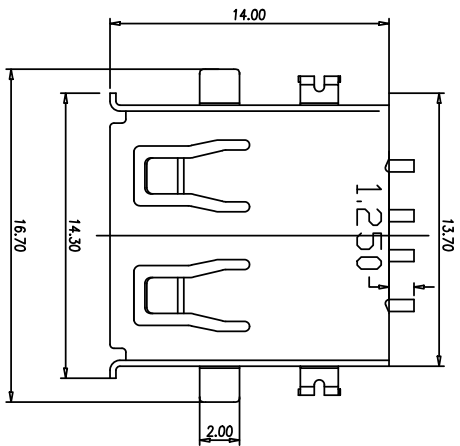


RoHS



2:1
DET "A"

Pin NUMBER SIGNAL NAME

1	VBUS
2	D-
3	D+
4	GND

产品图

PRODUCT CHART DWG

公差一览表

TOLERANCE UNLESS OTHERWISE SPECIFIED	公差
X	±0.35
X	±0.30
XX	±0.25
XXX	±0.10

单位

UNITS

MM

比例

SCALE

1:1

日期

DATE

2021/08/10

制图

DRAWING

L S S

审核

CHKD

G Z F

核准

APRD

黄国荣

产品料号

PRODUCT PART NO.

905-751B2022S10200

产品名称

PRODUCT NO.

AF/14.0 刺破式四脚前贴片后盖

角法

角法

又有边铁壳反向IC2 黑色SMT

版本

VER

A0

深圳市精拓金电子有限公司

- 电气特性:Electrical:
- 额定电流: Current Rating
1.5A/contact terminal
 - 额定电压: Voltage Rating
30V DC
 - 接触阻抗: Contact Resistance
30 milliohms MAX
 - 耐电压: Dielectric Withstanding Voltage:
500 V AC AT Sea Level
 - 绝缘阻抗: Insulation Resistance:
1000MEGA ohms MIN
- 物理性能: Mechanical:
- 插拔力: Connector Mate and Umate Force
Mate force: 3.57kgf (MAX)
Umate force: 1.02kgf (MIN)
 - 端子保持力: Terminal Retention
1.0kgf (MIN)
 - 寿命: 1500 次
- 原材料: Material:
- 塑胶: Housing: lcp
 - 端子: Contact: Copper Alloy C2680
 - 外壳: Shell: SPCC/c2680
- 电镀: Finish:
- 端子 Contact: Au G/F u" Plated on contact area
Tin50u" Plated on solder area
Nickel 50u" Plated underplating over all.
 - 外壳 Shell: Nickel 50u" Min plating over all.